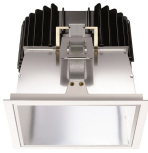


Ascent 150 II Square

ASCENT 150 II SQ 2400 4K STD

2059400



Product features

- The ASCENT 150 II SQ 2400 4K STD is a high efficient downlight luminaire with luminous flux: 2483lm, luminaire efficacy: 131lm/W, Colour rendering index Ra >80, Colour temperature: 4000K Neutral white, Average life rated at 50,000Hrs, Class II, Protection rating IP44/IK02, Cut out dimensions: 175mm, Weight: 1.7kg



PRODUCT OVERVIEW

IPC Code	2059400
Product name	ASCENT 150 II SQ 2400 4K STD
Technology	LED
Housing	Aluminium
Mount	Recessed
Environment	Internal
General application	Hospitality,Office,Retail
Certifications	EUNEW008
ETIM Class	EC001744
E-number FI	4237810
Fixture luminous flux (lm)	2483
Luminaire efficacy (lm/W)	131
LOR (%)	100
Colour temperature (K)	4000
CRI (Ra)	80
Colour Consistency (SDCM)	3
Photobiological Risk Group	Exempt Group 0
Total power consumption (W)	19
Electrical protection	Class II
Control gear type	Electronic
Average life (Nominal) (h)	50000
IP rating	IP44
IK rating	IK02
Product EAN number	5025768594009
Included lamp	INTEGRATED LED

DATA TABLE

General data

IPC Code	2059400
Product name	ASCENT 150 II SQ 2400 4K STD
Technology	LED
Housing	Aluminium
Mount	Recessed

Ascent 150 II Square

ASCENT 150 II SQ 2400 4K STD
2059400

Environment	Internal
General application	Hospitality,Office,Retail
Certifications	EUNEW008
ETIM Class	EC001744
E-number FI	4237810

Optical data

Fixture luminous flux (lm)	2483
Luminaire efficacy (lm/W)	131
LOR (%)	100
Colour temperature (K)	4000
CRI (Ra)	80
Colour Consistency (SDCM)	3
Adjustable chromaticity	N
Beam angle (Rated) (°)	80
Distribution type	Direct
Photobiological Risk Group	Exempt Group 0

Electrical data

Total power consumption (W)	19
Mains voltage (V)	220-240V~
Electrical protection	Class II
Control gear type	Electronic
Transformer required	Yes
Inrush Current (A)	45
Inrush Duration (µs)	20
Glow Wire Test (°C)	650
Nominal Frequency (Hz)	50/60/HF
Max. Luminaires per 16A C Breaker	80

Lifetime data

Lumen maintenance - L70 B50	60000
Lumen maintenance - L70 B20	60000
Lumen maintenance - L70 B10	60000
Lumen maintenance - L80 B50	60000
Lumen maintenance - L80 B20	60000
Lumen maintenance - L80 B10	60000
Lumen maintenance - L90 B50	60000
Lumen maintenance - L90 B20	60000
Lumen maintenance - L90 B10	52000
Average life (Nominal) (h)	50000

Physical data

IP rating	IP44
IK rating	IK02
Diffuser finish	Clear
Nominal Product Width (mm)	188
Nominal Product Height (mm)	158
Weight (kg)	1.7

Ascent 150 II Square

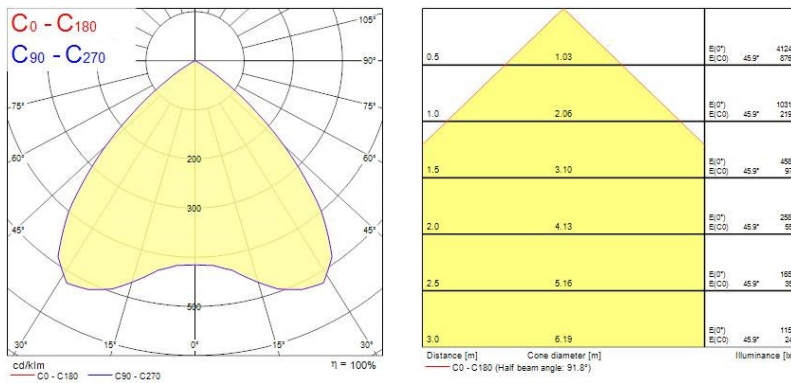
ASCENT 150 II SQ 2400 4K STD
2059400

Recessed Depth (mm)	158
---------------------	-----

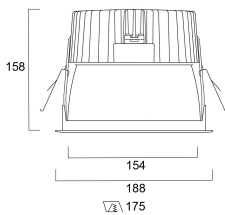
Packaging

Single packaging type	Carton
Product EAN number	5025768594009
Packaging single length / height (cm)	25.0
Packaging single width (cm)	20.0
Packaging single depth (cm)	25.0
DUN14 (outer)	05025768594009
Units per outer package	1
Packaging outer length / height (cm)	25.0
Packaging outer width (cm)	20.0
Packaging outer depth (cm)	25.0

PHOTOMETRY





TECHNICAL DRAWINGS




Ascent 150 II Square ASCENT 150 II SQ 2400 4K STD 2059400


Concord 2059400


 This luminaire contains built in LED lamps.

 } **LED**


The lamps cannot be changed in the luminaire.

874/2012 

 This luminaire contains built in LED lamps.

 } **LED**

The lamps cannot be changed in the luminaire.

Concord 2059400  874/2012