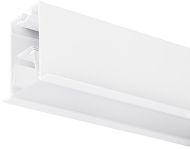


## Mini Continuum II - Direct - Trim

### MC2 TRIM 3.6M 3K DALIEM WHT OPAL

### 2093138



#### Product features

- 2093138 MC2 TRIM 3.6M 3K DALIEM WHT OPAL Continuous lines of LED light, white RAL 9016, direct distribution, trim detail for plasterboard ceilings, suitable for recessed installation either horizontally or vertically, various accessories available, compact and minimalist design based on the Golden Mean, ideal for offices, meeting rooms, corridors, education facilities, museums and libraries, extruded aluminium body, diffuser: opal, colour temperature: 3000K warm white, total system power: 66W, total fixture output: 6600lm, emergency output: 121lm, luminaire efficacy: 100lm/W, LOR: 100%, colour rendering: Ra >80, LED Chromacity: 3 step MacAdam ellipse, lifetime: 60,000 hours at 90% of the original output (L90), energy class: A++, A+, A, IR/UV free light source without heat radiation, operating voltage: 220-240V / 50-60Hz, drive current: 800mA, electronic driver, DALI dimmable, integral emergency: 3 hour maintained, electrical protection: CLASS I, IP20, suitable for internal environment only.



#### PRODUCT OVERVIEW

IPC Code	2093138
Product name	MC2 TRIM 3.6M 3K DALIEM WHT OPAL
Technology	LED
Housing	Aluminium
Mount	Recessed
Environment	Internal
General application	Education, Hospitality, Office, Retail
Certifications	EUNEW001
ETIM Class	EC002892
Fixture luminous flux (lm)	6600
Luminaire efficacy (lm/W)	100
LOR (%)	100
Colour temperature (K)	3000
Light colour	Warm White
CRI (Ra)	80
Colour Variation Initial (SDCM)	3
Glare control	UGR <17
Photobiological Risk Group	Exempt Group 0
Luminous flux (emergency) (lm)	121
Total power consumption (W)	66
Electrical protection	Class I
Control gear type	DALI
Minimum dimming level (%)	1
Average life (Nominal) (h)	50000
Housing colour	White
IP rating	IP20
Product EAN number	5025768931385
Luminous flux (emergency) (lm)	121
Lamps	Yes
Included lamp	INTEGRATED LED

## Mini Continuum II - Direct - Trim

*MC2 TRIM 3.6M 3K DALIEM WHT OPAL*  
2093138

### DATA TABLE

#### General data

IPC Code	2093138
Product name	MC2 TRIM 3.6M 3K DALIEM WHT OPAL
Technology	LED
Housing	Aluminium
Mount	Recessed
Environment	Internal
General application	Education,Hospitality,Office,Retail
Operating temperature rated (°C)	25
Certifications	EUNEW001
ETIM Class	EC002892

#### Optical data

Fixture luminous flux (lm)	6600
Luminaire efficacy (lm/W)	100
LOR (%)	100
Colour temperature (K)	3000
Light colour	Warm White
CRI (Ra)	80
Colour Variation Initial (SDCM)	3
Adjustable chromaticity	N
Distribution type	Direct
Glare control	UGR <17
Photobiological Risk Group	Exempt Group 0
Luminous flux (emergency) (lm)	121
Emergency duration (h)	3

#### Electrical data

Total power consumption (W)	66
Mains voltage (V)	220-240V~
Lamp power factor	0.98
Electrical protection	Class I
Control gear type	DALI
Minimum dimming level (%)	1
Drive current (mA)	800
Inrush Current (A)	40
Inrush Duration (µs)	178
Max. Luminaires per 10A C Breaker	15
Max. Luminaires per 13A C Breaker	20
Max. Luminaires per 16A C Breaker	23
Max. Luminaires per 20A C Breaker	30
Max. Luminaires per 10A B Breaker	9
Max. Luminaires per 13A B Breaker	12
Max. Luminaires per 16A B Breaker	14
Max. Luminaires per 20A B Breaker	18

## Mini Continuum II - Direct - Trim

MC2 TRIM 3.6M 3K DALIEM WHT OPAL  
2093138

### Lifetime data

Lumen maintenance - L70 B50	60000
Lumen maintenance - L70 B20	60000
Lumen maintenance - L70 B10	60000
Lumen maintenance - L80 B50	60000
Lumen maintenance - L80 B20	60000
Lumen maintenance - L80 B10	60000
Lumen maintenance - L90 B50	60000
Lumen maintenance - L90 B20	47000
Lumen maintenance - L90 B10	33000
Average life (Nominal) (h)	50000

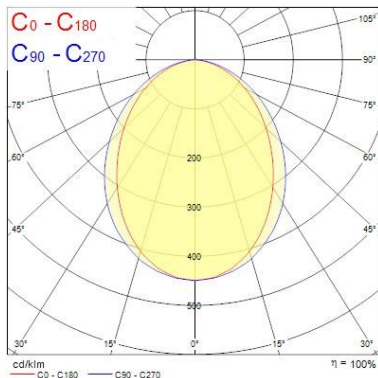
### Physical data

Housing colour	White
IP rating	IP20
Diffuser finish	Opal
Diffuser material	Polycarbonate
Nominal Product Length (mm)	3600
Nominal Product Width (mm)	80
Nominal Product Height (mm)	86
Weight (kg)	8.7
Recessed Depth (mm)	136

### Packaging

Single packaging type	Carton
Product EAN number	5025768931385
Packaging single length / height (cm)	365.0
Packaging single width (cm)	9.0
Packaging single depth (cm)	10.0
DUN14 (outer)	05025768931385
Units per outer package	1
Packaging outer length / height (cm)	365.0
Packaging outer width (cm)	9.0
Packaging outer depth (cm)	10.0

## PHOTOMETRY



Distance [m]	Cone diameter [m]	E <sub>0°</sub> [lx]	E <sub>15°</sub> [lx]	E <sub>30°</sub> [lx]	E <sub>45°</sub> [lx]	E <sub>60°</sub> [lx]	E <sub>75°</sub> [lx]	E <sub>90°</sub> [lx]
0.5	1.13 0.91	11998	49.8°	1723	42.4°	2402		
1.0	2.27 1.83	2976	49.8°	431	42.4°	600		
1.5	3.40 2.74	1322	49.8°	191	42.4°	267		
2.0	4.54 3.65	744	49.8°	108	42.4°	150		
2.5	5.67 4.57	476	49.8°	69	42.4°	96		
3.0	6.81 5.48	331	49.8°	49	42.4°	67		

Distance [m]      Cone diameter [m]      Illuminance [lx]

— C0 - C180 (Half beam angle: 84.8°)  
— C90 - C270 (Half beam angle: 97.2°)

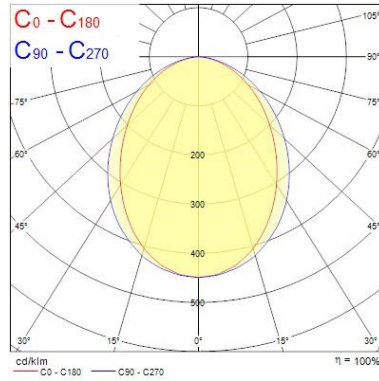
## Mini Continuum II - Direct - Trim

MC2 TRIM 3.6M 3K DALIEM WHT OPAL  
2093138

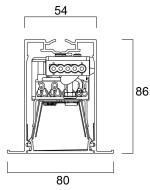
0.5	1.13 0.91	E(0°) E(C90) E(C0)	217 31 44
1.0	2.27 1.83	E(0°) E(C90) E(C0)	54 9 11
1.5	3.40 2.74	E(0°) E(C90) E(C0)	24 3 5
2.0	4.54 3.65	E(0°) E(C90) E(C0)	14 2 3
2.5	5.67 4.57	E(0°) E(C90) E(C0)	9 1 2
3.0	6.81 5.48	E(0°) E(C90) E(C0)	6 1 1

Distance [m]      Cone diameter [m]      Illuminance [lx]

— C0 - C180 (Half beam angle: 84.8°)  
— C90 - C270 (Half beam angle: 37.2°)





## TECHNICAL DRAWINGS




## Mini Continuum II - Direct - Trim MC2 TRIM 3.6M 3K DALIEM WHT OPAL 2093138


**Concord** 2093138


 This luminaire contains built in LED lamps.

 } **LED**


The lamps cannot be changed in the luminaire.

874/2012 

 This luminaire contains built in LED lamps.

 } **LED**

The lamps cannot be changed in the luminaire.

**Concord** 2093138  874/2012