



We offer the largest
selection of architectural
glass available
everywhere.

architectural glass

Yushuo Glass Tempered Glass

Catalogue 2019

Our high-performance architecture glass sets the industry standard.

Yushuo Glass Technology Group is a Holding consisting of 6 subsidiary companies, with a whole range of products and solutions in glass, Yushuo opens a path for creativity, freedom and innovation for the development of Building Projects and Architectural solutions for his clients, developing wealth and sustain growth for projects in more than 75 countries.

Yushuo Glass Group Co, Ltd. Located at the center of the China Glass Industrial Park in Shandong Province, has lead the market for Decorative Glass, innovating with new designs and Technologies in the last years, this allow the Holding to expand their services and products into Architectural Glass and finally reaching the development of Project Glass Solutions in accordance to the customers needs. Supported by our old and new customers, the materials provided by Yushuo Glass are Top-Line products of the industry, using the best quality raw materials, we ensure that your project last for longer time, and also advising our customers to get the best results possible.







The Advantages

Using Project Glass in your buildings decreases the construction and assembling time, since the Glass and materials can reach the construction ready to be installed.

Simplified process, we handle, consult and advice our clients in all the details needed, avoiding contacting multiple different factories and companies.

Reduces the risks and waste of material during the process of construction, since the Glass is already processed according to the needs of the project.

Ensure the deliver of solutions and improvements before it's late, the designs and plans are carefully examined, maintaining the communication with the investors, architects and engineers before the production is started, delivering samples and information as required by the team avoiding lost and setbacks in the delivery.

Reduces costs in personal, contracts, materials and production.

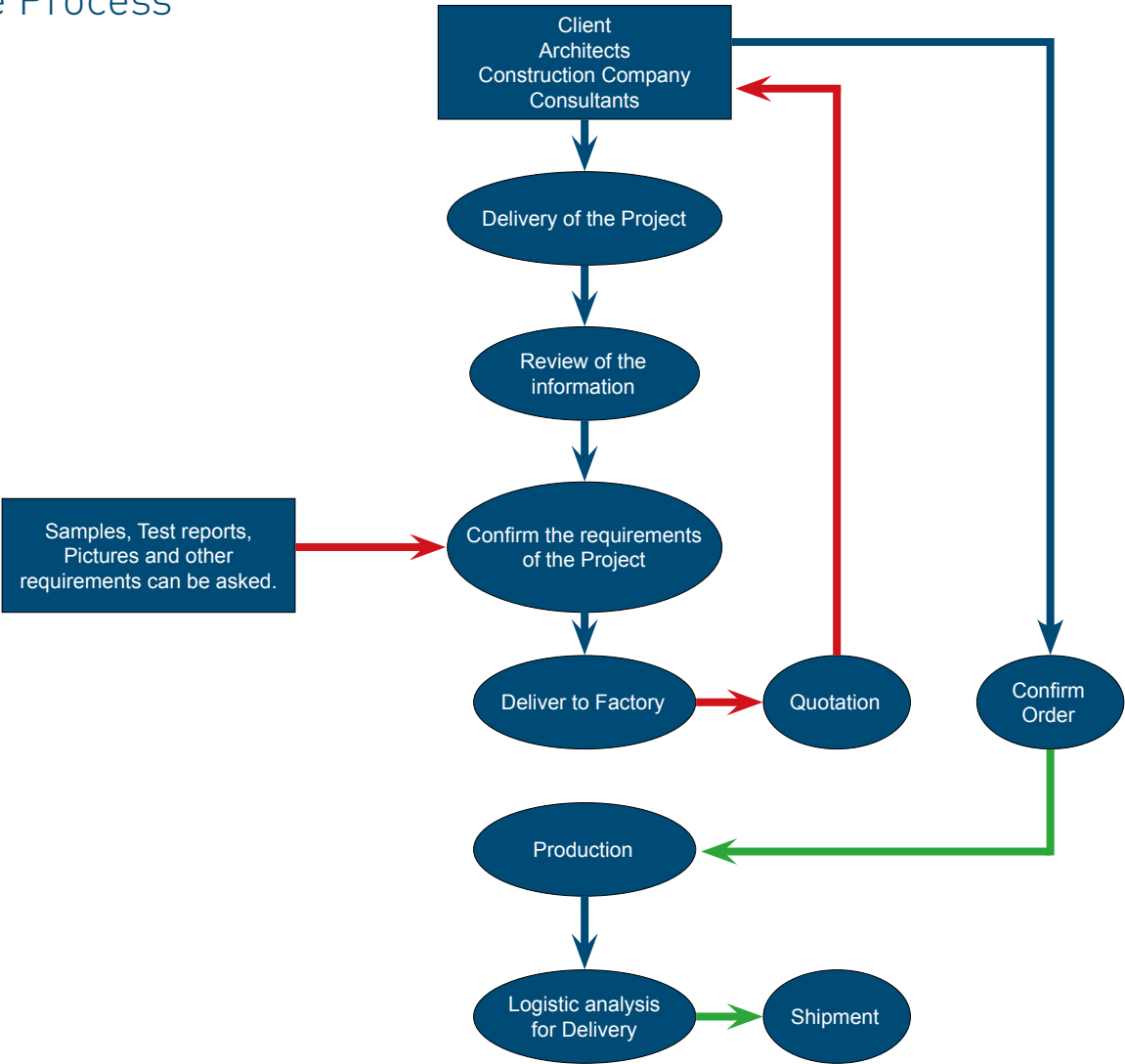
Our Experience

Developing a series of projects in China, cooperating with our factories and our staff and keeping an open communication in the development of every project, let us ensure the best results possible in every step of the process, since the moment we get the architect's designs and engineer's plans, following the manufacturing of Glass and the required products for the project with an optimal delivery and quality. Always prioritizing the longest live of the project.

The ultimate goal of us is to achieve customers' satisfaction and maintain the friendship with every client. No matter what kind of questions you have, we will deliver answers as soon as possible to fulfill your needs. Our sales team will share our experience and supply professional choices to ensure you make a right purchasing decision. What's more, you are sure to gain a pleasant purchasing experience with the prompt after-sale service supplied by us.

As a stable supplier, for we have a very wide range of raw materials and can produce different colors of glass, so we can meet the customers' needs and make their purchase become more convenient.

The Process





FLAT & CURVED TEMPERED GLASS

Toughened or tempered glass is a type of safety glass processed by controlled thermal or chemical treatments to increase its strength compared with normal glass. Tempering puts the outer surfaces into compression and the interior into tension. Such stresses cause the glass, when broken, to crumble into small granular chunks instead of splintering into jagged shards as plate glass (a.k.a. annealed glass) does. The granular chunks are less likely to cause injury.

- SPECIFICATION

Min Size: 300mm*300mm, Max Size: 3300*13000mm, Thickness range: 2.5-25mm

- CATEGORY

Tempered glass, Ultra clear tempered glass,
Reflective tempered glass, Low-e tempered glass

- QUALITY STANDARD

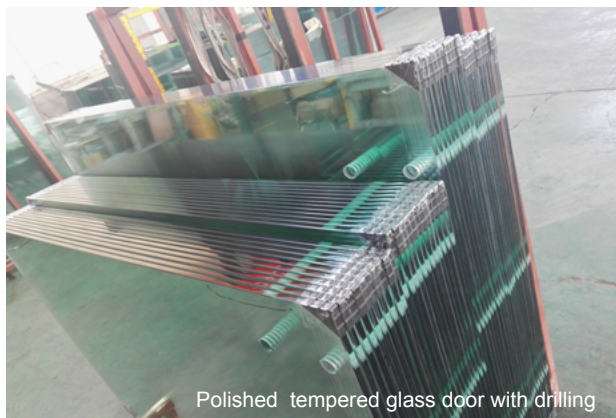
CE(EN 12150-2:2004), CCC(GB15763.2-2005), AS/NZS2208:1996, ASTM C1048-04

- PARAMETERS LIST FOR CURVE TEMPERED GLASS

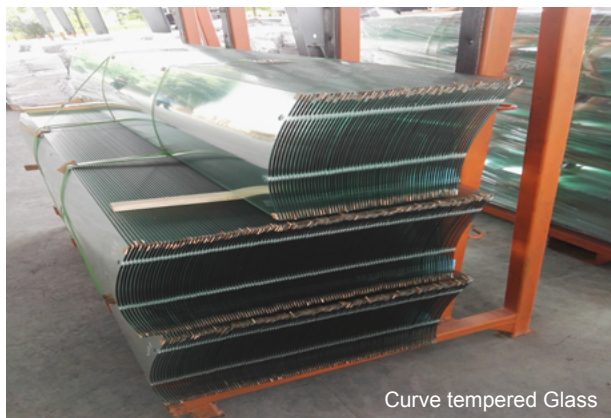
Thickness (mm)	Minimum Radius (mm)	Maximum arch rise (mm)	Maximum arch length (mm)
5	1000	684	2500
6	1200	594	2500
8	1500	491	2500
10	1800	416	2500
12	1800	416	2500
15-19	2000	378	2500

- SCOPE OF APPLICATION

widely used in building door & windows, glass curtain wall, interior partition, sightseeing lift, channel, furniture, glass fence etc.



Polished tempered glass door with drilling



Curve tempered Glass



SEMI-TEMPERED GLASS \ HOT BENDING GLASS

SEMI-TEMPERED GLASS

Semi-tempered or heat-strengthened glass did have a thermal treatment similar to the thermal curing, but where the obtained voltage is lower than the one of toughened glass, because the cooling was slower.

Semi-tempered or heat-strengthened glass doesn't have the same characteristics compared to the commodities which it was made of:

Heat strengthened or semi-toughened glass can not be cut, sawn, drilled or modified after the thermal treatment, Any cutting or drilling of holes must happen before the treatment.

- SPECIFICATION

Min Size: 300mm*300mm, Max Size: 3300*5200mm, Thickness range: 3-25mm

- CHARACTER OF SEMI-TEMPERED GLASS

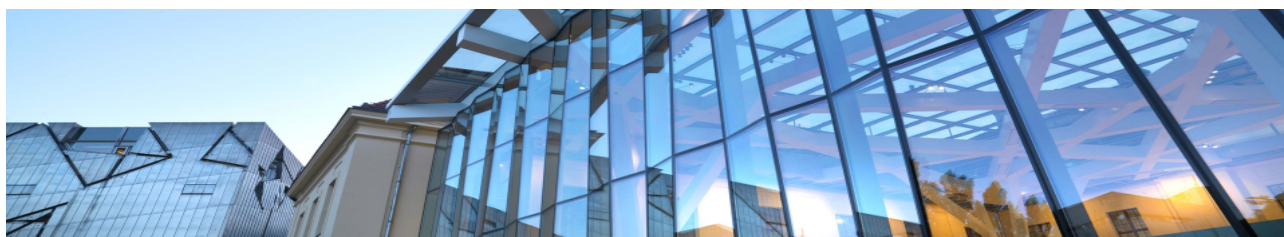
Not easily self-explosion. It has flatter surface than tempered glass.

The load impact is 2 to 3 times bigger compared with standard (float) glass.

The flexural strength is 2 to 3 times bigger compared with standard (float) glass.

Heat strengthened or semi-toughened glass has a better resistance to thermal shocks than annealed glass: it resists temperature differences of circa 100°C, while annealed glass breakage can occur with a temperature difference of circa 30°C. However, this value is highly variable and depends on the quality of the edge of the glass.

Unlike fully tempered glass, heat-strengthened glass is not considered a safety glazing material. Accordingly, heat-strengthened glass is the preferred product for projects that do not require safety glass but are likely to be met with thermal or mechanical loads.



HOT BENDING GLASS

In hot bending, the manufacturer uses molds, which allow the glass to adopt the desired form. The glass, as well as the mold, is then heated up to 580–600 °C.

Bending can be solely based on gravity. Alternatively, the glass bending process can be assisted in which a mechanical bending press forces the glass into a target shape. The shape is then slowly cooled to avoid any residual tension in the glass.

Bending technology allows producers to create a wider range of shapes, for instance, a tighter radius and non-cylindrical shapes. The hot bending process itself does not add mechanical strength to the glass nor the ability to tolerate temperature variations.

- CHARACTER OF HOT BENDING GLASS

Thickness	3-22mm
Color	clear, bronze, grey, green, blue, reflective
Size	Max. 3000*4000mm, Min. 100*300mm, custom sizes
Regular size	500*3500mm, 500*2000mm
Applications	Furniture, table, chair
Certificate	CE, ISO, CCC
Packing	Exportation plywood cases





Prime Projects

SOHO's Glass Office in Fuxing Plaza, Shanghai

An all glass and mirror inner cladding exposes the infrastructure of SOHO's new office building in Shanghai. The glass creates manifold reflections of the sales models and meeting rooms, while leaving the original height and structure in view. This creates a 'double reality' that merges with the stunning views of downtown Shanghai.

Membrane ceilings create extra attention for the models. Light and surfaces reflect throughout the space, even further diffused by half see through mirrors. Some of the floors are islands of stone or carpet, to create static moments to offset this sea of reflectivity.

As SOHO rents out the offices in this building in bare shell state, the main design idea is to show the customers what they are actually getting, and at the same time add a layer of inspiring luxury to it.

The glass only approach allows creating a complexity that emerges from a simple choice. That is what makes this project bold and layered at the same time.

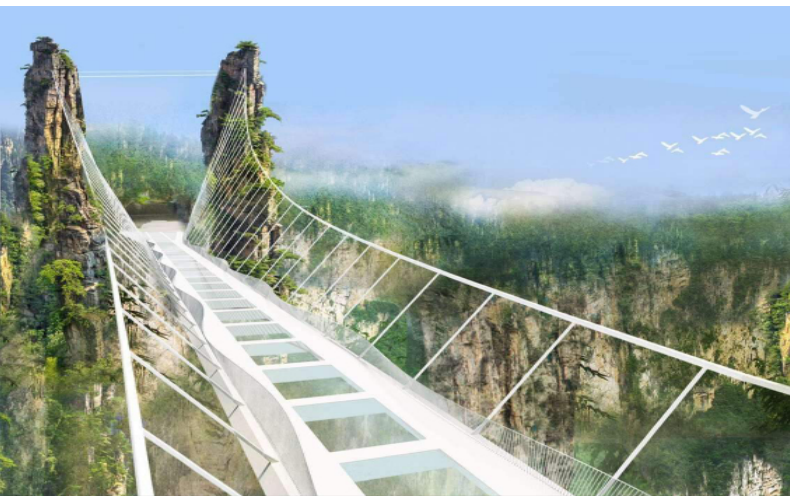


- 6mm clear tempered glass
- 8mm clear tempered glass
- 12mm clear tempered glass
- 19mm clear tempered glass
- 3mm+0.38PVB+3mm clear tempered laminated glass
- 6mm+0.38PVB+6mm clear tempered laminated glass
- 6mm+0.76PVB+6mm clear tempered laminated glass
- 5mm+12A+5mm+12A+5mm clear insulated glass

Prime Projects

Underground station,Guangdong

- Flat tempered glass
- Curved tempered glass
- Laminated glass



Zhangjiajie tianmen mountain glass plank road

- Flat tempered glass
- Curved tempered glass
- Laminated glass



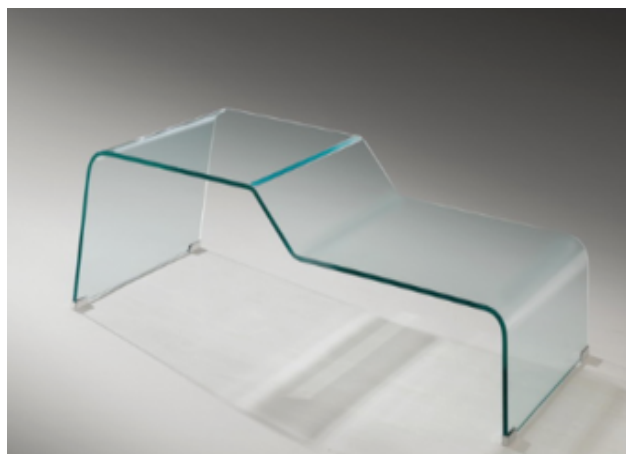
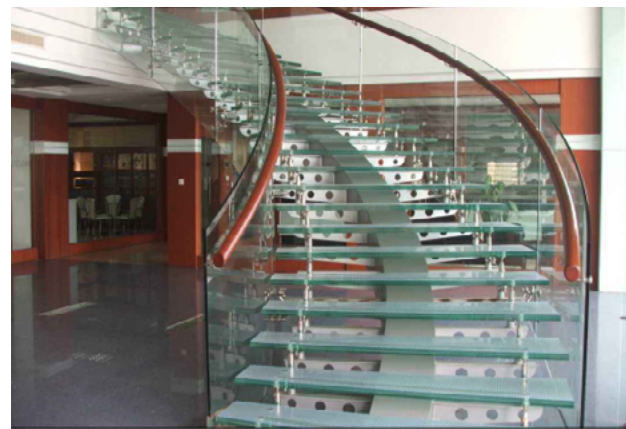
Tengzhou Binjiang International Hotel

- Flat tempered glass
- Laminated glass
- Fabric Laminated glass
- Insulated glass



we offer the most comprehensive
portfolio of products **specified to**
close the building envelope

Winter Garden | Anti slip floor | Bathroom | Shopping center | skylights





Jinan Yaoqiang International Airport



Jinan Wanda Plaza

We are everywhere.

Our architectural products grace some of China's most discerning building. And we have experience in all applications: hospitals, shopping malls, convention centers, airports, hotels, museum, universities, government and more.



Shandong Museum



RT Market



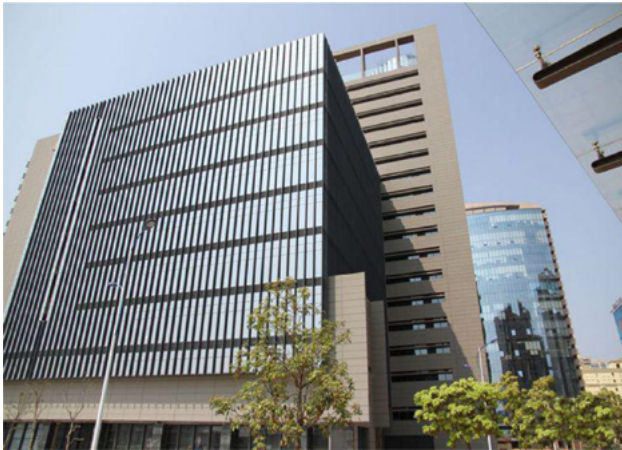
Jining Medical College



Beichen Mansion



Binjiang International Hotel



Guang Fa Finance Building



Tengzhou Fast Train Station



Tengzhou People's Hospital



+86 632 5150311



info@yushuoglass.com



www.yushuoglass.com



Modern Glass Industrial Base,
Tengzhou, Shandong, China