

PRODUCT CATALOGUE 2016

New Generation
TETA Smart Glass® Film

Made in

Turkey

TETA Glass Technologies is proud to be Turkey's first company to develop the smart glass film and production technology. TETA Glass Technologies produces its TETA Smart Glass® Film with domestic technology and under their trademark which can compete with its global competitors with patented manufacturing technology.

- ✓ Domestic production
- ✓ Full company guarantee
- ✓ Long service life
- ✓ Professional service
- ✓ Multi-Functionality
- ✓ Easy to apply

info@tetacam.com

www.tetacam.com

+90 (212) 236 00 11



TETA SMART GLASS®

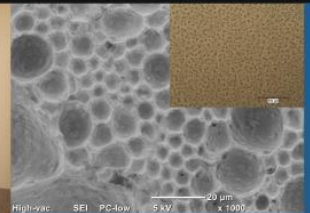
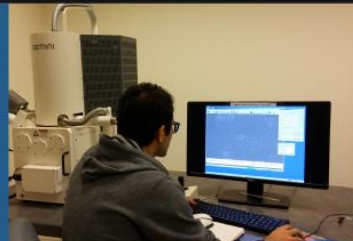
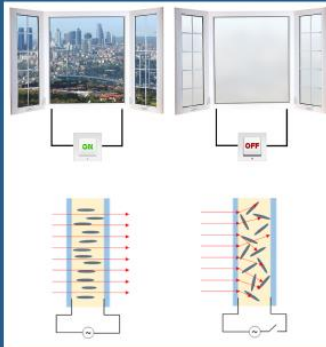
TETA Glass Technologies

HOW SMART GLASS WORKS?

TETA Smart Glass® film transform from diffusive phase to transparent phase when electric current is applied.

PDLC type smart films are electro-optical cells which consist of indium tin oxide (ITO) coated PET film layers and active layer between them. Active layer is composed of transparent polymeric matrix and liquid crystal (LC) droplets. ITO coated PET surfaces are used as optically transparent conductive electrodes. LC molecules are randomly orientated in the absence of electric field. Random LC orientation results with the scattering of transmitting light and diffusive appearance of the smart film. LC molecules are polarized and ordered in the direction of electrical field when the electrical current is applied between ITO electrodes. Large portion of the incoming light transmits without scattering form LCs and this effect results with the transparent appearance of the smart film.

TETA Smart Glass® is produced with materials and procedures which are members of a new PDLC generation. High-tech materials and production procedure behind the TETA smart glass films guarantees homogeneity, high transmittance, short reaction time and long service life. All features of the TETA smart glass is tested and reported by independent test institutions.



WE ARE PRODUCING WITH NOVEL TECHNOLOGY

- ✓ Research and development for new generation TETA Smart Glass Film was funded by **Ministry of Science, Industry and Technology**.
- ✓ TETA Glass Technology is one of the very few companies which **uses their own formulations** for PDLC production procedures.
- ✓ Research and development for TETA smart film was performed at the advanced research laboratories of **leading universities of Turkey**.
- ✓ TETA Smart Glass® Film was developed at the research laboratory which placed in the technology development region of **Istanbul Technical University KOSGEB**.
- ✓ Intellectual property rights of technology and production procedures of the TETA Smart Glass Film is under **protection with patent application**.

info@tetacam.com

www.tetacam.com

+90 (212) 236 00 11



IDEAL FOR USE IN YOUR LIVING SPACES

TETA Smart Film can be applied on all glass surfaces i.e. in your house such as windows, doors, glass balconies, sliding and conforming doors and sunroofs. It is easy to apply on your own glass surface with its self-adhesive layer.

It is healthy to use TETA Smart Glass® Film in your house. It does not pollute air of your living space with hazardous chemical vapours.

High UV blocking feature prevents you and your family from hazardous effects of UV components of sun light. These unique features make your house and office safer, healthier and valuable.



CREATES FUNCTIONAL WORKING AREAS

Glass walls are most preferred materials which are widely used in design of modern office and smart offices. TETA Smart Glass Film creates an elegant view for your office when you replace old fashion jalousie and roller blinds. You can have both comfort of clear glass and confidentiality of opal glass together by choosing our smart glass application. These features help you to improve your efficiency at work.



Yıldız Posta Caddesi, Yıldız Residence, No: 24, 7/17, Gayrettepe - Beşiktaş / İSTANBUL

PROVIDES NEW CAPABILITIES FOR YOUR BUSINESS!

TETA Smart Glass Film provides new opportunities and capabilities for advertisers, product promotions, fair organizers, decorators, designers working on interior architecture, education and communication. It is favourable to use at smart shop windows, showcases and info panels with its back-projection feature.

TETA Smart Glass Film is applicable for medical needs with its switchable curtaining effect. It is used in hospitals, clinics, MRI and other medical imaging chambers, surgery and intensive care units and other rooms where the patient privacy is needed.

TETA Smart Glass Film is advantageous for design of fitting rooms in the shops, security cabinets, pay desks in the banks and exchange offices, multifunctional boards, displays and panels in the malls. It can replace conventional sunshades at public transport vehicles, motorboats, yachts, trains and other tramways. It can be used to separate cabinets in these platforms in addition to use for utilization for smart side window curtains.



info@tetacam.com

www.tetacam.com

+90 (212) 236 00 11



THERE ARE A LOT OF REASONS TO CHOOSE TETA SMART GLASS® FILM

- ✓ TETA Smart Glass® Film provides electrically switchable, dimmable and back projectable glass surfaces. You can create and develop multi-functional areas and innovative applications for your office and homes.
- ✓ TETA Smart Glass® Film is under protection of full company guaranty for 2 years. Longer guaranty periods are optional. Our team provides professional service for any technical problem and changes the product without any cost requested from end user.
- ✓ TETA Smart Glass® Film is healthy. It does not contains any hazardous chemicals and does not pollute environment with toxin agents. Film is produced fully compatible with RoSH and REACH directives dictated by EU.
- ✓ TETA Smart Glass® Film is indigenously developed and produced locally. Choosing our product makes contribution to economy of the country.
- ✓ Low voltage directive (LVD) compatibility of TETA Smart Glass® Film is tested. LVD is dictated by EU for electrical devices. TETA Glass Technologies cares safety of your life.
- ✓ TETA Smart Glass® Film blocks most of the infrared radiation incoming with sun light. It improves thermal insulation behaviour of your windows and helps to increase energy efficiency of your building.
- ✓ TETA Smart Glass® Film blocks hazardous UV rays incoming with sunlight and improves UV protection of your windows.
- ✓ IP-67 class power supplies are offered with TETA Smart Glass® Film.
- ✓ Our distributor or certified local dealers works on your project carefully and receives your order. Our professional technical team install TETA Smart Glass® Film at your location and deliver your smart glasses fully operational.
- ✓ Customer satisfaction is top priority for our company. You will always get professional post-sale service.



Yıldız Posta Caddesi, Yıldız Residence, No: 24, 7/17, Gayrettepe - Beşiktaş / İSTANBUL

RoHS
2011/65/EU



UV
Resistance

REGISTRIERUNG
E
VALUATION
UND
A
STORISIERUNG
VON
CH
CHEMIKALIEN

UPDATE OF THE EUROPEAN UNION
OFFICIAL JOURNAL FOR THE
LOW VOLTAGE DIRECTIVE

WE HAVE THE POWER FROM HIGH QUALITY

TETA Smart Glass Film is tested at the accredited laboratories and confirmed by international test institute INTERTEK.

Our quality management policy is ISO certified by JAS-ANS.

- ✓ RoSH compatibility
- ✓ REACH compatibility
- ✓ UV ageing
- ✓ LVD compatibility



info@tetacam.com

www.tetacam.com

+90 (212) 236 00 11

