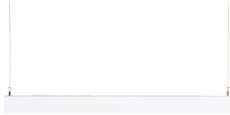


Mini Continuum II - Direct/Indirect - Suspended Kit

MC2-KIT D/I 1.2M 4K DALIEM WHT OPAL

2093098



Product features

- 2093098 MC2-KIT D/I 1.2M 4K DALIEM WHT OPAL Continuous lines of LED light, white RAL 9016, direct/indirect distribution (65/35), suspended kit version is pre-wired and supplied complete with end caps and suspension cables, compact and minimalist design based on the Golden Mean, ideal for offices, meeting rooms, corridors, education facilities, museums and libraries, extruded aluminium body, diffuser: opal, colour temperature: 4000K neutral white, total system power: 35W, total fixture output: 4050lm, emergency output: 128lm, luminaire efficacy: 116lm/W, LOR: 100%, colour rendering: Ra >80, LED Chromacity: 3 step MacAdam ellipse, lifetime: 50,000 hours at 90% of the original output (L90), energy class: A++, A+, A, IR/UV free light source without heat radiation, operating voltage: 220-240V / 50-60Hz, drive current: (Direct) 800mA + (Indirect) 350mA, electronic driver, DALI dimmable, direct/indirect independently addressable, integral emergency: 3 hour maintained, electrical protection: CLASS I, IP20, suitable for internal environment only.



PRODUCT OVERVIEW

IPC Code	2093098
Product name	MC2-KIT D/I 1.2M 4K DALIEM WHT OPAL
Technology	LED
Housing	Aluminium
Mount	Suspended
Environment	Internal
General application	Education, Hospitality, Office, Retail
Certifications	EUNEW002
ETIM Class	EC001743
Fixture luminous flux (lm)	4050
Luminaire efficacy (lm/W)	116
LOR (%)	100
Colour temperature (K)	4000
Light colour	Neutral White
CRI (Ra)	80
Colour Variation Initial (SDCM)	3
Glare control	UGR <21
Photobiological Risk Group	Exempt Group 0
Luminous flux (emergency) (lm)	128
Total power consumption (W)	35
Electrical protection	Class I
Control gear type	DALI
Minimum dimming level (%)	1
Average life (Nominal) (h)	50000
Housing colour	White
IP rating	IP20
Product EAN number	5025768930982
Luminous flux (emergency) (lm)	128
Lamps	No
Included lamp	INTEGRATED LED

Mini Continuum II - Direct/Indirect - Suspended Kit

MC2-KIT D/I 1.2M 4K DALIEM WHT OPAL
2093098

DATA TABLE

General data

IPC Code	2093098
Product name	MC2-KIT D/I 1.2M 4K DALIEM WHT OPAL
Technology	LED
Housing	Aluminium
Mount	Suspended
Environment	Internal
General application	Education,Hospitality,Office,Retail
Operating temperature rated (°C)	25
Certifications	EUNEW002
ETIM Class	EC001743

Optical data

Fixture luminous flux (lm)	4050
Luminaire efficacy (lm/W)	116
LOR (%)	100
Colour temperature (K)	4000
Light colour	Neutral White
CRI (Ra)	80
Colour Variation Initial (SDCM)	3
Adjustable chromaticity	N
Distribution type	Direct/Indirect
Glare control	UGR <21
Photobiological Risk Group	Exempt Group 0
Luminous flux (emergency) (lm)	128
Emergency duration (h)	3

Electrical data

Total power consumption (W)	35
Mains voltage (V)	220-240V~
Lamp power factor	0.95
Electrical protection	Class I
Control gear type	DALI
Minimum dimming level (%)	1
Drive current (mA)	800
Inrush Current (A)	53
Inrush Duration (µs)	200
Max. Luminaires per 16A C Breaker	48

Lifetime data

Lumen maintenance - L70 B50	60000
Lumen maintenance - L70 B20	60000
Lumen maintenance - L70 B10	60000
Lumen maintenance - L80 B50	60000
Lumen maintenance - L80 B20	60000
Lumen maintenance - L80 B10	60000
Lumen maintenance - L90 B50	60000

Mini Continuum II - Direct/Indirect - Suspended Kit

MC2-KIT D/I 1.2M 4K DALIEM WHT OPAL

2093098

Lumen maintenance - L90 B20	47000
Lumen maintenance - L90 B10	33000
Average life (Nominal) (h)	50000

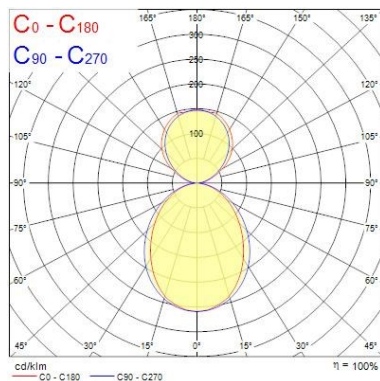
Physical data

Housing colour	White
IP rating	IP20
Diffuser finish	Opal
Diffuser material	Polycarbonate
Nominal Product Length (mm)	1200
Nominal Product Width (mm)	54
Nominal Product Height (mm)	86
Weight (kg)	3.8

Packaging

Single packaging type	Carton
Product EAN number	5025768930982
Packaging single length / height (cm)	128.0
Packaging single width (cm)	15.0
Packaging single depth (cm)	15.0
DUN14 (outer)	05025768930982
Units per outer package	1
Packaging outer length / height (cm)	128.0
Packaging outer width (cm)	15.0
Packaging outer depth (cm)	15.0

PHOTOMETRY



Distance [m]	Cone diameter [m]	Beam angle [°]	Beam angle [°]	Beam angle [°]	Illuminance [lx]
0.5	1.13	86.4°	97.2°	133	133
	0.94	48.8°	48.8°	48.8°	19
		42.2°	42.2°	42.2°	38
1.0	2.27	86.4°	97.2°	33	33
	1.88	48.8°	48.8°	48.8°	5
		42.2°	42.2°	42.2°	6
1.5	3.40	86.4°	97.2°	15	15
	2.82	48.8°	48.8°	48.8°	3
		42.2°	42.2°	42.2°	3
2.0	4.54	86.4°	97.2°	8	8
	3.76	48.8°	48.8°	48.8°	1
		42.2°	42.2°	42.2°	2
2.5	5.67	86.4°	97.2°	5	5
	4.70	48.8°	48.8°	48.8°	1
		42.2°	42.2°	42.2°	1
3.0	6.81	86.4°	97.2°	4	4
	5.63	48.8°	48.8°	48.8°	1
		42.2°	42.2°	42.2°	1

Distance [m]

Cone diameter [m]

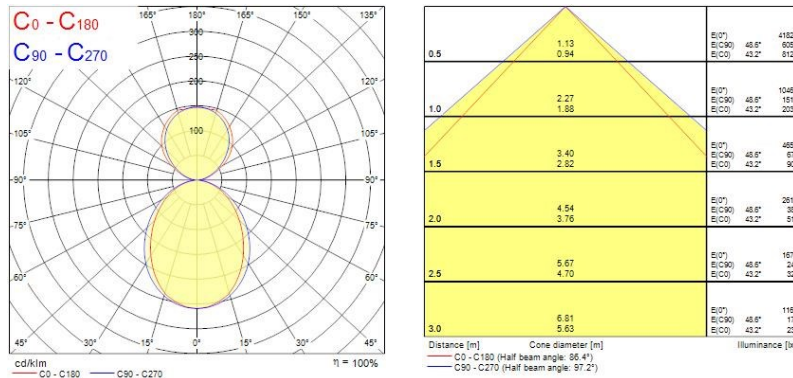
C0 - C180 (Half beam angle: 86.4°)

C90 - C270 (Half beam angle: 97.2°)

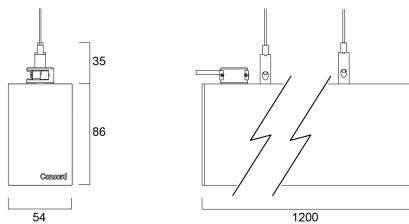
Illuminance [lx]

Mini Continuum II - Direct/Indirect - Suspended Kit

MC2-KIT D/I 1.2M 4K DALIEM WHT OPAL
2093098





TECHNICAL DRAWINGS




Mini Continuum II - Direct/Indirect - Suspended Kit MC2-KIT D/I 1.2M 4K DALIEM WHT OPAL 2093098


Concord 2093098


 This luminaire contains built in LED lamps.


 } **LED**


The lamps cannot be changed in the luminaire.

874/2012 

 This luminaire contains built in LED lamps.


 } **LED**

The lamps cannot be changed in the luminaire.

Concord 2093098  874/2012