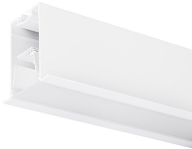


Mini Continuum II - Direct - Trim - Extensions

MC2 TRIM 0.9M 3K DALI WHT OPAL

2093165



Product features

- 2093165 MC2 TRIM 0.9M 3K DALI WHT OPAL Continuous lines of LED light, white RAL 9016, direct distribution, extension module, trim detail for plasterboard ceilings, suitable for recessed installation either horizontally or vertically, various accessories available, compact and minimalist design based on the Golden Mean, ideal for offices, meeting rooms, corridors, education facilities, museums and libraries, extruded aluminium body, diffuser: opal, colour temperature: 3000K warm white, total system power: 16W, total fixture output: 1650lm, luminaire efficacy: 103lm/W, LOR: 100%, colour rendering: Ra >80, LED Chromacity: 3 step MacAdam ellipse, lifetime: 60,000 hours at 90% of the original output (L90), energy class: A++, A+, A, IR/UV free light source without heat radiation, operating voltage: 220-240V / 50-60Hz, drive current: 600mA, electronic driver, DALI dimmable, electrical protection: CLASS I, IP20, suitable for internal environment only.



PRODUCT OVERVIEW

IPC Code	2093165
Product name	MC2 TRIM 0.9M 3K DALI WHT OPAL
Technology	LED
Housing	Aluminium
Mount	Recessed
Environment	Internal
General application	Education, Hospitality, Office, Retail
Certifications	EUNEW008
ETIM Class	EC002557
E-number FI	4237857
Fixture luminous flux (lm)	1650
Luminaire efficacy (lm/W)	103
LOR (%)	100
Colour temperature (K)	3000
Light colour	Warm White
CRI (Ra)	80
Colour Variation Initial (SDCM)	3
Glare control	UGR <17
Photobiological Risk Group	Exempt Group 0
Total power consumption (W)	16
Electrical protection	Class I
Control gear type	DALI
Minimum dimming level (%)	1
Average life (Nominal) (h)	50000
Housing colour	White
IP rating	IP20
Product EAN number	5025768931651
Lamps	Yes
Included lamp	INTEGRATED LED

DATA TABLE

Mini Continuum II - Direct - Trim - Extensions

MC2 TRIM 0.9M 3K DALI WHT OPAL
2093165

General data

IPC Code	2093165
Product name	MC2 TRIM 0.9M 3K DALI WHT OPAL
Technology	LED
Housing	Aluminium
Mount	Recessed
Environment	Internal
General application	Education,Hospitality,Office,Retail
Operating temperature rated (°C)	25
Certifications	EUNEW008
ETIM Class	EC002557
E-number FI	4237857

Optical data

Fixture luminous flux (lm)	1650
Luminaire efficacy (lm/W)	103
LOR (%)	100
Colour temperature (K)	3000
Light colour	Warm White
CRI (Ra)	80
Colour Variation Initial (SDCM)	3
Adjustable chromaticity	N
Distribution type	Direct
Glare control	UGR <17
Photobiological Risk Group	Exempt Group 0

Electrical data

Total power consumption (W)	16
Mains voltage (V)	220-240V~
Lamp power factor	0.95
Electrical protection	Class I
Control gear type	DALI
Minimum dimming level (%)	1
Drive current (mA)	600
Inrush Current (A)	53
Inrush Duration (µs)	200
Max. Luminaires per 16A C Breaker	48

Lifetime data

Lumen maintenance - L70 B50	60000
Lumen maintenance - L70 B20	60000
Lumen maintenance - L70 B10	60000
Lumen maintenance - L80 B50	60000
Lumen maintenance - L80 B20	60000
Lumen maintenance - L80 B10	60000
Lumen maintenance - L90 B50	60000
Lumen maintenance - L90 B20	47000
Lumen maintenance - L90 B10	33000
Average life (Nominal) (h)	50000

Mini Continuum II - Direct - Trim - Extensions

MC2 TRIM 0.9M 3K DALI WHT OPAL

2093165

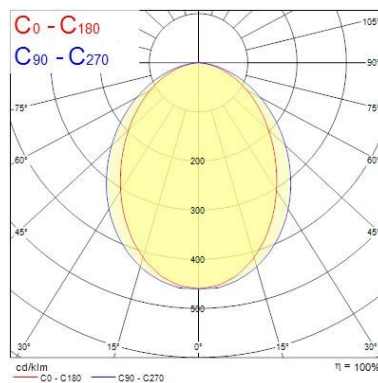
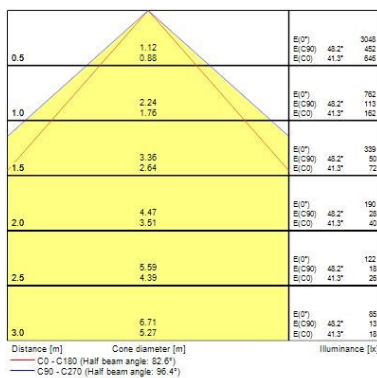
Physical data

Housing colour	White
IP rating	IP20
Diffuser finish	Opal
Diffuser material	Polycarbonate
Nominal Product Length (mm)	900
Nominal Product Width (mm)	80
Nominal Product Height (mm)	86
Weight (kg)	1.8
Recessed Depth (mm)	136

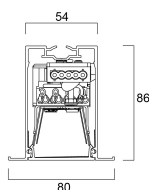
Packaging

Single packaging type	Carton
Product EAN number	5025768931651
Packaging single length / height (cm)	90.0
Packaging single width (cm)	9.0
Packaging single depth (cm)	10.0
DUN14 (outer)	05025768931651
Units per outer package	1
Packaging outer length / height (cm)	90.0
Packaging outer width (cm)	9.0
Packaging outer depth (cm)	10.0

PHOTOMETRY




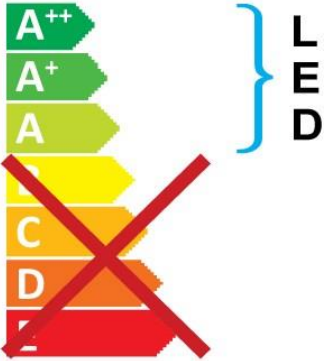
TECHNICAL DRAWINGS




Mini Continuum II - Direct - Trim - Extensions MC2 TRIM 0.9M 3K DALI WHT OPAL 2093165


Concord 2093165

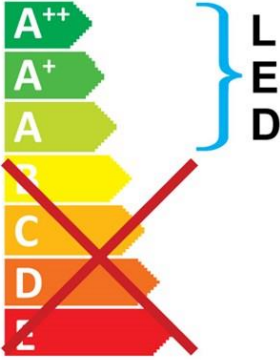
 This luminaire contains built in LED lamps.




The lamps cannot be changed in the luminaire.

874/2012 

 This luminaire contains built in LED lamps.



The lamps cannot be changed in the luminaire.

Concord 2093165  874/2012