

Spacesaver Working Wall



Innovative stylish storage furniture creating a practical working environment

The S+B Spacesaver Working Wall has been developed specifically for laboratories, technology, food testing, educational, healthcare and research environments.

To illustrate our new range of storage furniture our design team have compiled 5 example renderings to show some possible uses. The Spacesaver assembly has endless configurations that would be suitable as a teaching wall with whiteboards for school and university or as a highly space efficient resource base for any research or working environment.



*Although we can supply interactive whiteboards as part of the assembly, many of our clients prefer to source the supply and installation of this item directly in order to prevent any warranty validation issues.



The Beta example wall comprises open shelving, file cabinets, drawer packs, tall storage cabinets and pull out storage cabinets for storage of equipment and or samples. These assemblies are equally well suited to learning, research and office type environments.



The Gamma example wall provides a combination of lockers for secure storage, open shelving, pigeon hole units, open vertical storage slots, trays with differing depths and general cupboard units create a great resource base.



The Delta example wall comprises open shelving, file cabinets, drawer packs, tall storage cabinets and pull out storage cabinets for storage of equipment and or samples. Creating a room divider, these assemblies are equally well suited to learning, research and office type environments.

Flexible Storage Options

Alpha, Beta, Gamma, Delta and Epsilon walls are all examples of what can be achieved, however the Space Saver Working Wall offers many configurations.

Working with you our design team from initial consultation of designs, including CAD and 3D drawings allow you to view the working wall configuration before manufacture.

Turnkey Package

If you require S+B can provide a full turnkey package - stripping out and removal of old furniture, reinstatement of mechanical and electrical services – supplying and fitment of new flooring, suspended ceilings, lighting, interactive whiteboards, decoration and installation of new furniture. From a single space to a complete refurbishment, we create design that works.

Practical space-efficient storage



This range of free standing tall storage modules includes shelving, tray units, baskets (both can be autoclaved), drawer packs, laptop charger/storage units, file cabinets, waste cabinets, display cabinets, and pull out storage units, can be configured in a multitude of ways to satisfy client specific needs.

Utilise space at higher levels which would otherwise be unused and wasted. A safety ladder hooked on the full width rail, with side grab rails can be provided for easy, safe access to the top of higher assemblies.



The Epsilon example wall is a very flexible and highly space efficient Teaching Wall assembly. As well as the glass fronted display cabinets, open shelving and drawer packs, this assembly includes sliding whiteboards which conceal shelving behind.

We also offer:

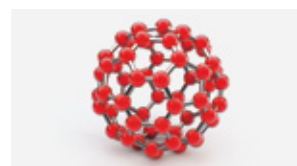
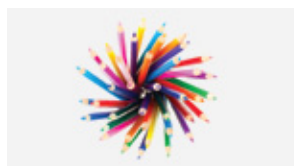
Ecoline Fume Cupboards

A range of new generation high performance, low energy fume cupboards designed to be supplied as stand alone or for clients who really want a fully integrated laboratory design.



Murals

We offer S+B murals as an additional service to furniture supply and install contracts – and not as a stand alone offering but of course we'd always be pleased to talk over any enquiries you might have regarding our complete range of products.



Lab Engineering

Design, manufacture and installation of laboratory furniture, fume cupboards and associated services for Research, Healthcare, Education, Food & Beverage, Utilities and Industry.

Furniture for Learning

Design and manufacture of specialist school furniture systems for Science, Design, Control, Food and Information Technology as well as cross curricula general classroom furniture.



British made

Designed and Manufactured at our factory in Manchester.

Visit our website for more details and alternative designs - www.splusb.co.uk

Labtec Street, Swinton
Manchester M27 8SE

t: +44 (0)161 793 9333
f: +44 (0)161 728 9149

e: sales@splusb.co.uk
www.splusb.co.uk



Find us on facebook:
S+B UK LTD



Follow us on twitter:
@SBUKLTLD