



origin

DOORS AND WINDOWS

Residential Door Specification File



Contents

Specification Overview	04
Security	08
Hardware Components	09
Panel Options	11
Residential Door Make Up	14
Panel Make Up	15
Performance & Limitations	16
Master Configurations	18
Technical Drawings	26
Gaskets	42
Installation Guide	44

Specification overview

Thermally Broken Aluminium Residential Door

External view of residential doors (open in)



Internal view of residential doors (open in)



Profile specification

Outer Frame Depth	75mm
Sash Depth	59mm
Threshold Height (not including rebate)	50mm
Mobility Threshold Height	20mm

Features

- ▶ 20-year guarantee*
- ▶ Chamfered bead design
- ▶ Packaged in kit form for easy transportation and installation
- ▶ 5 or 8 point locking system available
- ▶ Each door comes with four security hinges.
- ▶ 3 Star keyed cylinder
- ▶ Thumb-turn lock as standard
- ▶ Panel composition: Aluminium inner and outer layers with a highly efficient Thermimax core
- ▶ 35 panel choices available

Options and extras

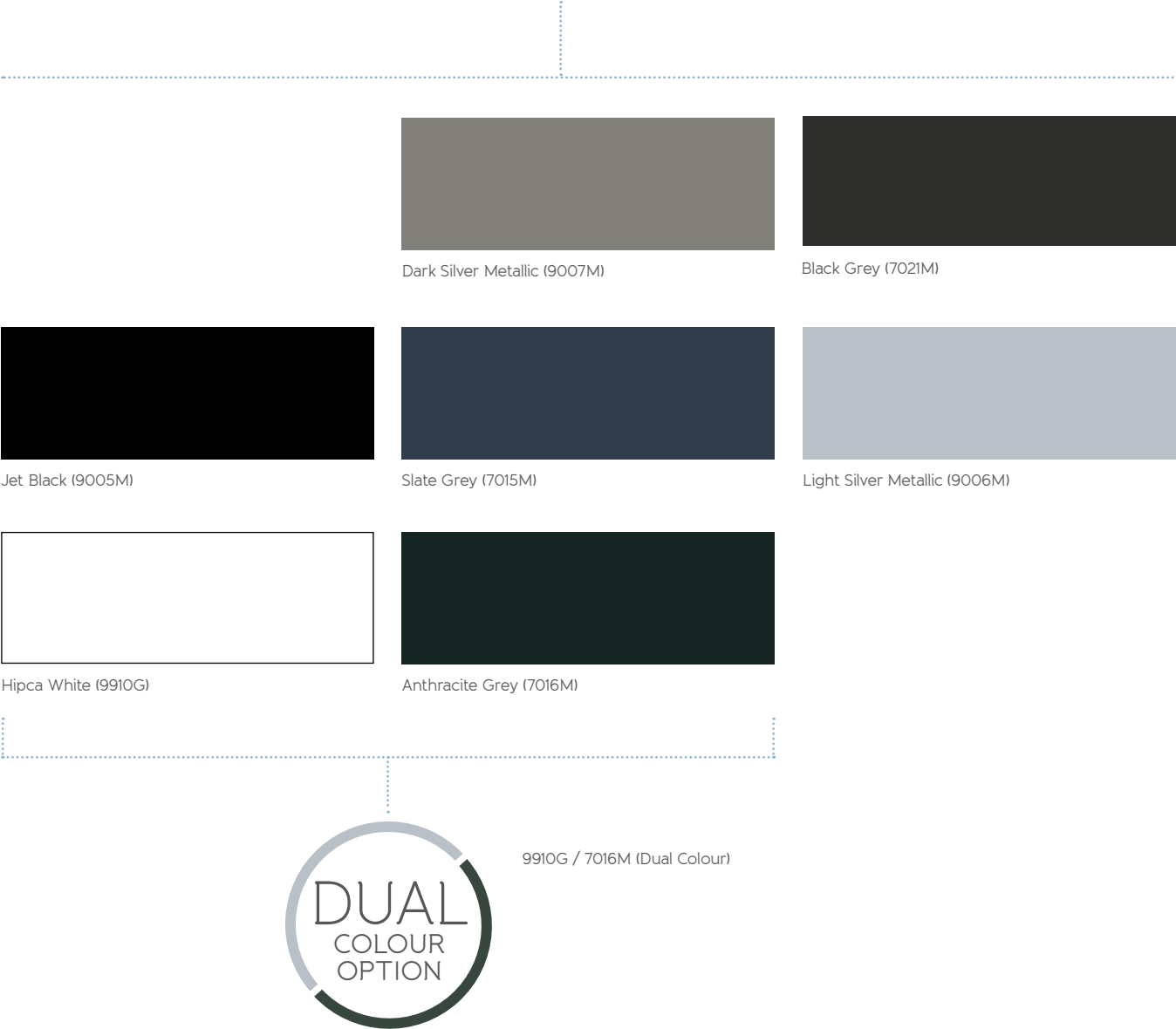
- ▶ Single and French residential doors
- ▶ Accommodates 32mm aluminium panels or double and triple glazing with unit sizes of 24mm, 28mm or 32mm
- ▶ Weathered (Class 8A), non-weathered and mobility (Class 4A) thresholds available
- ▶ Open in or open out
- ▶ Cill options are: 95, 155, 180 and 225mm
- ▶ Available in over 150 different colours
- ▶ 3 star cylinder with coded magnetic key option (ABS)
- ▶ Hinge colours: black, white, stainless steel finish, colour coded
- ▶ Gaskets available in 7 different colours: black, white, light grey, graphite grey, light oak, bronze, chestnut brown
- ▶ Door to window coupling
- ▶ Matching side panels**
- ▶ Comprehensive handle range

*panels will be limited to a 5-year warranty

**Size restrictions apply

5 week lead time

Available in the following popular colour finishes



Origin's 4 woodgrain colours are available



Natural Oak



Golden Oak



Mahogany



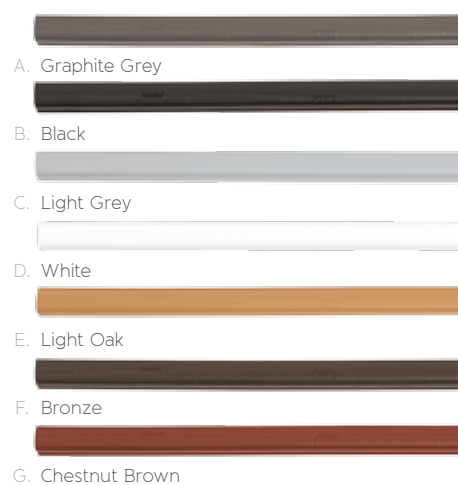
Walnut

8 week lead time on woodgrain colours



Bespoke RAL colours are available on residential doors

Door Colour	Recommended Q-Lon Gasket Colour
A. 7015M, 7016M and 9007M	Graphite Grey
B. 9005M and 7021M	Black
C. 9006M	Light Grey
D. 9910G	White
E. Natural Oak and Golden Oak	Light Oak
F. Walnut	Bronze
G. Mahogany	Chestnut Brown



Security

Origin's Multi-Point Locks

Residential doors use the same great high-security 8 point lock used in the Origin Bi-fold Door, but with the addition of an offset spindle function

The Origin Multi-Point Lock offers 8 points of locking and is part of the reason our door system is fully document Q compliant as standard

As an option to the standard locking system with lever/lever handle, a high security, 5 point, automatic locking system is available. Allowing the user to simply shut the door and turn the key without the need to lift the handle first

Barrels

We offer 2 types of locking barrel/cylinder

Our standard barrel is certified to 3 Star British Kite Mark TS007:2014

Our most secure locking barrel is a 3 Star British Kite Mark TS007:2014, with coded magnetic keys

Standard Barrel
– 3 Star ATK

3 Star British
Kite Marked ABS
Barrel with coded
magnetic keys



Hardware Components

Security Restrictor

We offer the option of having a security restrictor on the Origin Residential Door.

The restrictor is designed to limit the door opening prior to visitors entering. It's easy to apply and release (when the door is open).

Available in gold and chrome.



Handles

There are three handle options available, a bar handle, a finger pull escutcheon and our standard Yale lever handle.

- ▶ The bar handle is available in three styles – straight, offset and bow bar. These come in two sizes, 1200mm (720mm for bow bar) and 500mm (550mm for bow bar), and are available in a brushed stainless steel finish
- ▶ The pull handles are available with automatic locking only
- ▶ The standard Yale handle is available in black, white, chrome or gold



Letterbox

Letterboxes are available as an optional add-on for a number of the panels available in the Origin Residential Door range. Due to the bespoke nature of our products, the positioning of the letterbox will be predetermined by the panel size, type and style.



The letterbox takes full A4 size mail and is available in 5 colours - white, black, gold, chrome and satin stainless steel.

- ▶ External flap opens to 180°
- ▶ Fully sprung loaded with finger slot for easy opening
- ▶ Contains external weather seal and internal draught seal
- ▶ Internal nylon brush seal to reduce air filtration

Door Knockers with Spyholes

There are two door knocker styles available for the Origin Residential Door, the Affinity vertical slim line knocker and the Affinity urn knocker. Both knocker styles include a fitted spyhole for added security and are fitted with an integral escutcheon plate, leaving no unsightly bolts on the inside of your door

Affinity vertical slim line door knocker - available in white, black, gold, chrome and satin stainless steel

Affinity urn knocker - available in chrome and gold

Spyholes available separately in chrome and gold

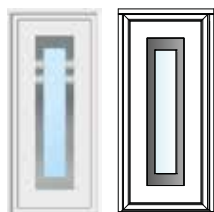


Panel Options

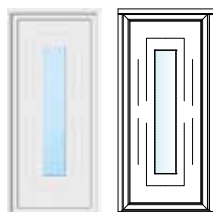
Contemporary – Sleek designs with a contemporary twist



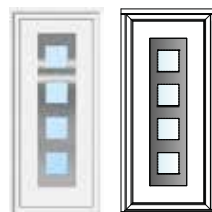
CO 01



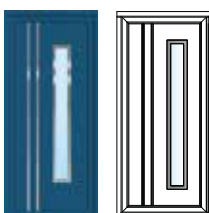
CO 02



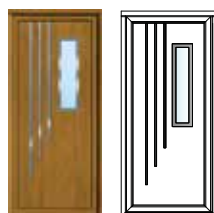
CO 03



CO 04



CO 05



CO 06



CO 07



Traditional – A modern take on traditional style



TR 01



TR 02*



TR 03



TR 04*



TR 05



TR 06

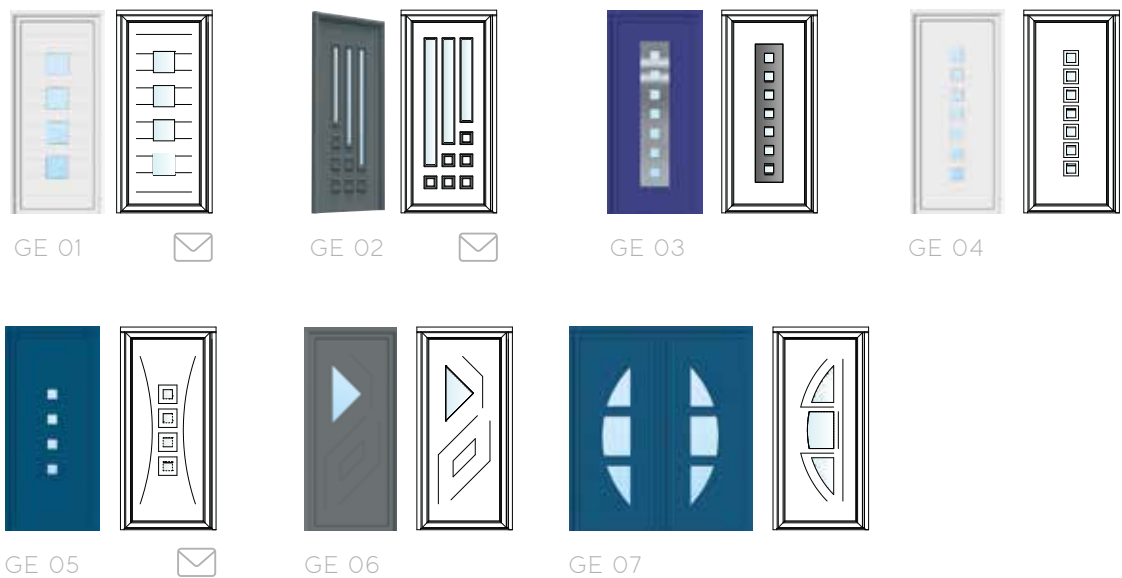


TR 07

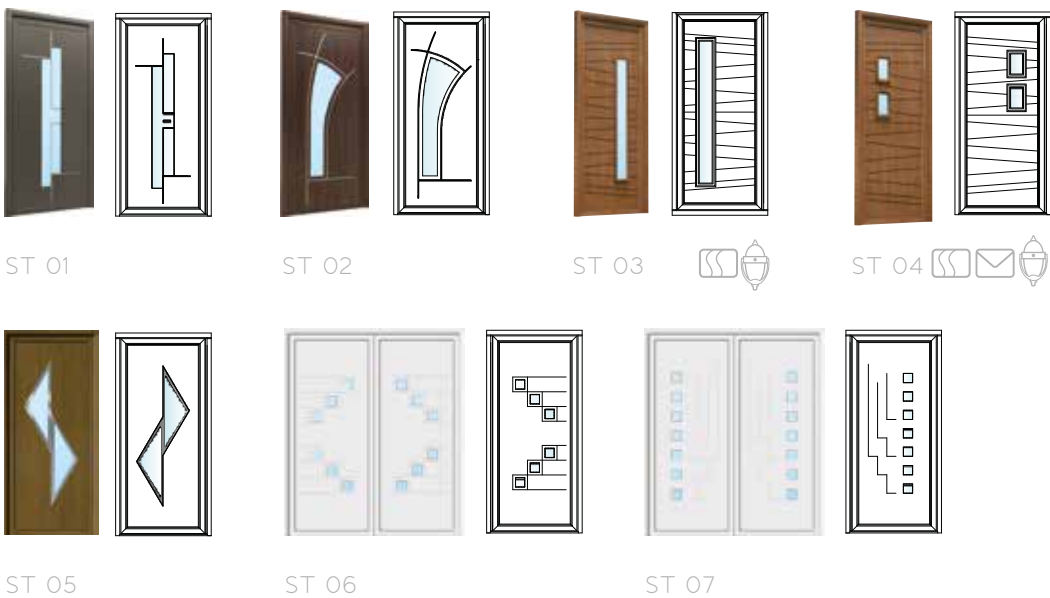


Panel Options

Geometric – Striking designs with geometric patterns



Statement – Bold panels for statement exteriors



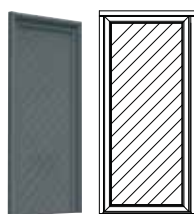
Seamless – Simplicity and style seamlessly combined



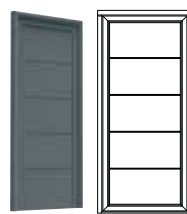
SE 01



SE 02



SE 03



SE 04



SE 05



SE 06



SE 07



Key

 Letterbox available

 Knocker available

 Available with or without glazing

*studs (as shown on TR02 & 04) are an optional extra

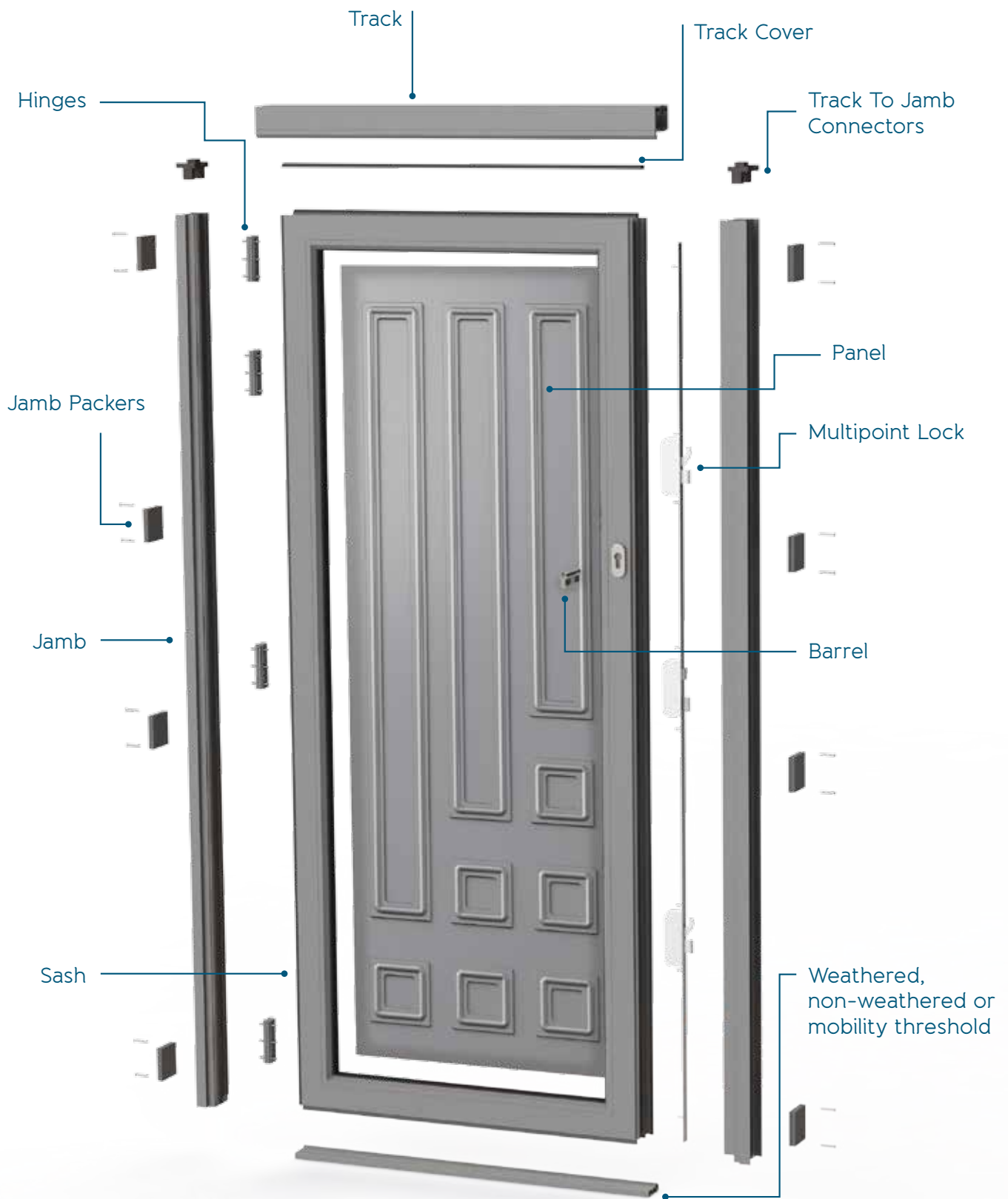
Mid-rail option

Helping further broaden your design possibilities, Origin offer the option of having a mid-rail pre-installed. Elegantly executed, the mid-rail is fixed horizontally, and is available in two options – one being a 60:40 split, and the other a 50:50 split.

Perfect for porches, they can either accommodate glass on the top and bottom, or a panel can be installed in the bottom section for additional privacy.

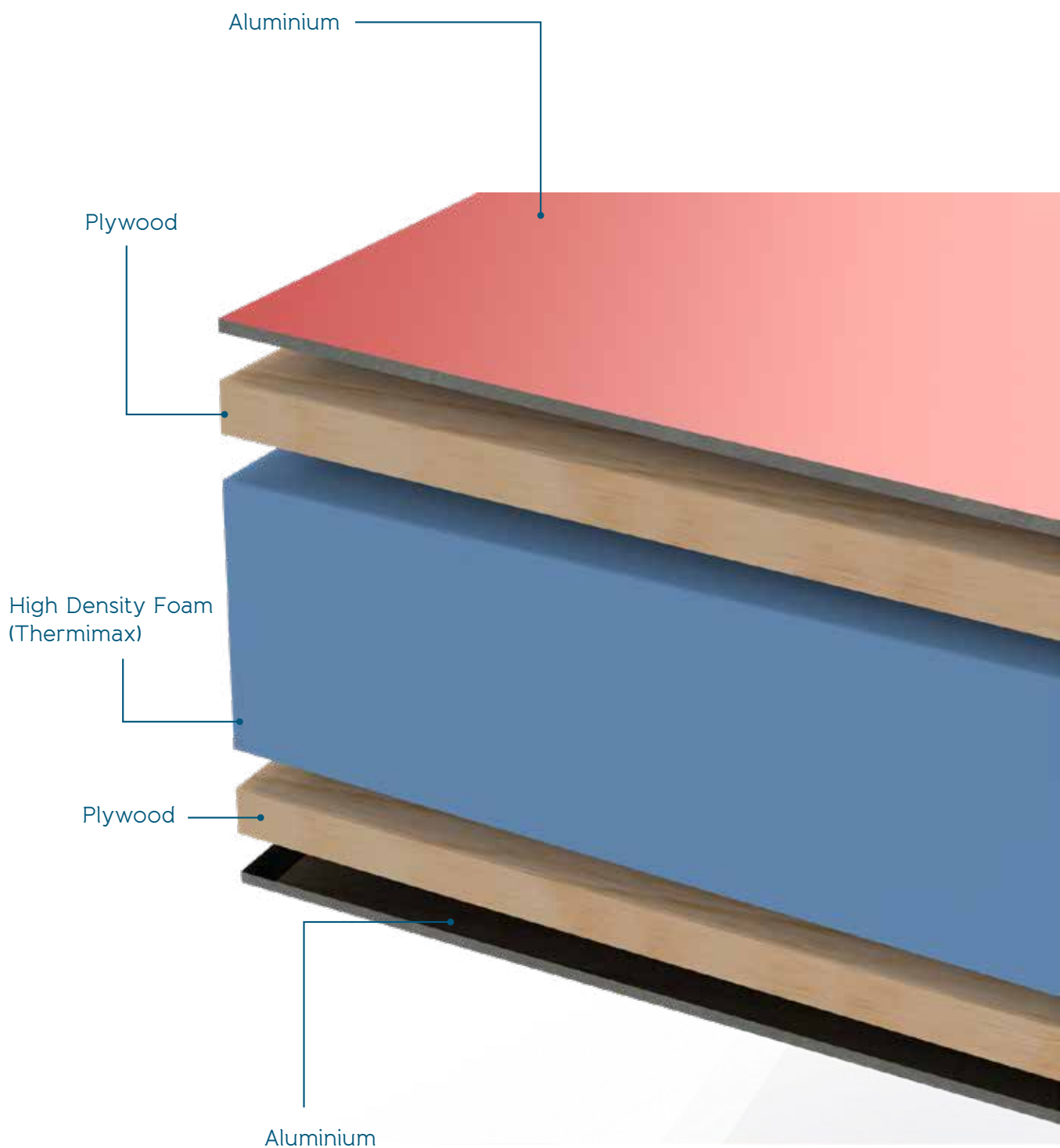


Residential Door Make-Up



*Panel shown is Geometric option, GE 02

Panel Make-up



Performance & Limitations

Origin Thermal Ratings

Origin Residential Door Double Glazed	1.6 W/(m ² K)
Origin Residential Door Triple Glazed (with krypton)	1.3 W/(m ² K)
Origin Residential Door Triple Glazed (with argon)	1.5 W/(m ² K)
Origin Residential Door with Panel	1.7 W/(m ² K)

Weather Rating (weathered threshold)

Air Permeability	Class 4
Water Tightness	Class 8A
Resistance to Wind Load	Class A5
Exposure Category	2000

Performance Testing

PAS 24 Certified (Document Q Compliant)

BS6375 Parts 1,2 & 3 Certified

Accreditation

ISO 9001

Building Regulation Requirements

New Build
and Extensions 2.0 W/(m²K)

Replacements 1.8 W/(m²K)

Energy Rating E or better

(All doors must conform to these requirements)

Size limitations

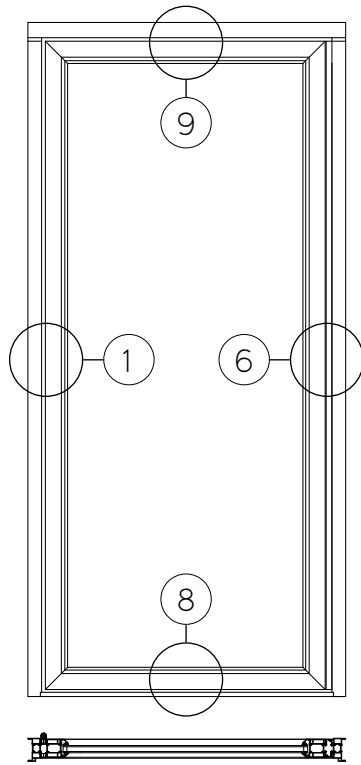
	Width	Height
Minimum and Maximum Dimensions:		
Single door:	Min W 400mm Max W 1130mm	Max H 2700mm
Minimum and Maximum Dimensions:		
French door:	Min W 800mm Max W 2500mm	Max H 2650mm
Minimum and Maximum Dimensions:		
Garage door:	Min W 800mm Max W 2500mm	Max H 2650mm

Please note that the minimum and maximum sizes vary depending on the panel chosen.



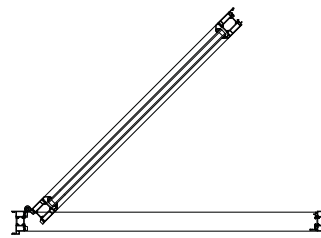
Master Configurations

Master Configuration Single Residential Door



OUTSIDE

See Configuration Key for section detail ►



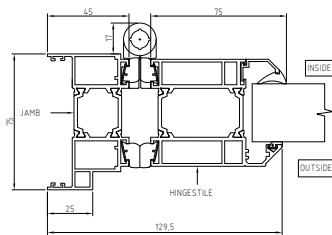
OUTSIDE

Key features

- Multi multipoint locking system
- 4 security hinges for optimum security
- Door opens in or out
- 35 panel styles

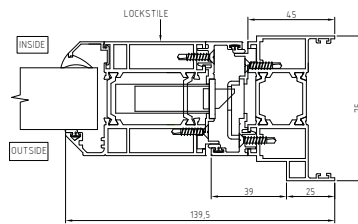
Configuration Key

1 - Hinge Jamb Detail



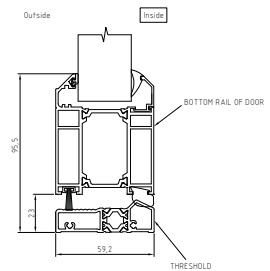
See page 26

6 - Locking Jamb Detail



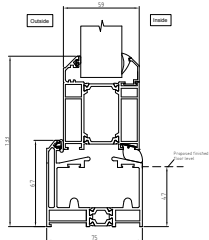
See page 31

8 - Mobility Threshold Detail



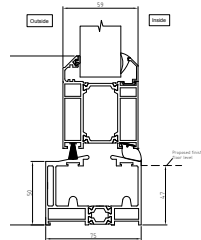
See page 33

8a - Weathered Threshold Detail



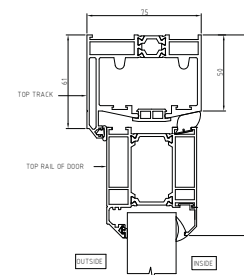
See page 34

8b - Non-weathered Threshold Detail



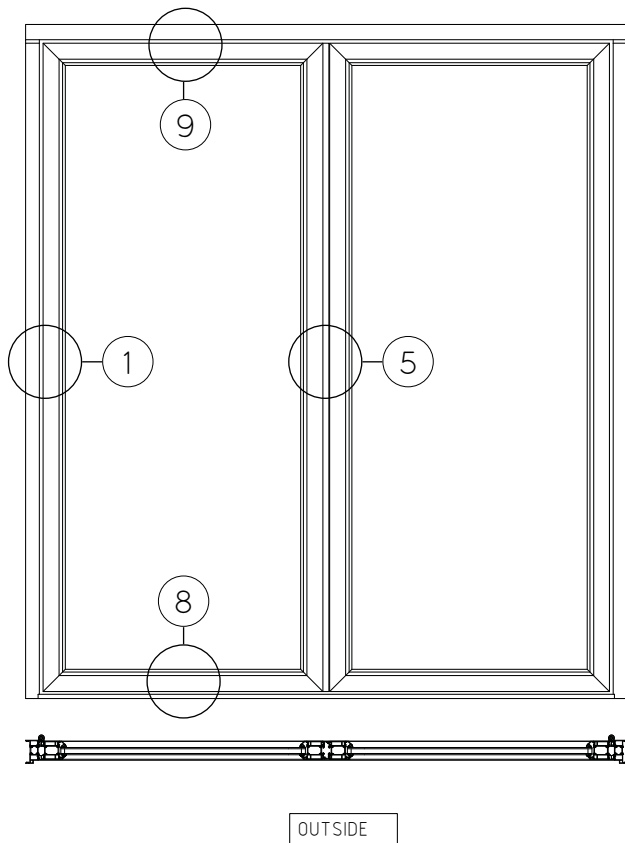
See page 35

9 - Top Track Detail

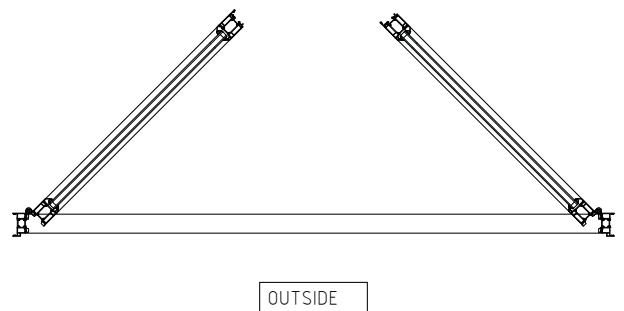


See page 37

Master Configuration French door



See Configuration Key for section detail ►

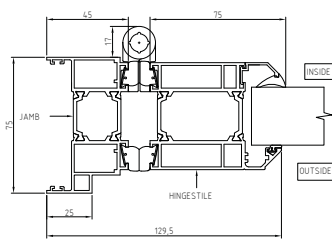


Key features

- Origin multipoint locking system
- Works as a French door
- Door opens in or out
- 35 panel styles

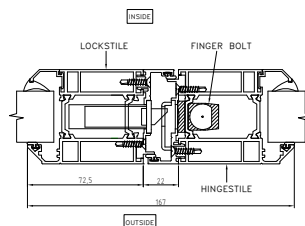
Configuration Key

1 - Hinge Jamb Detail



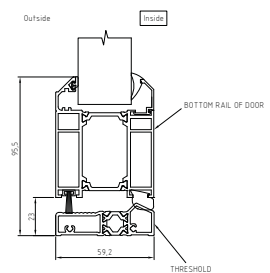
See page 26

5 - Locking Slave Detail



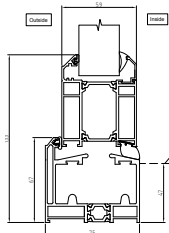
See page 30

8 - Mobility Threshold Detail



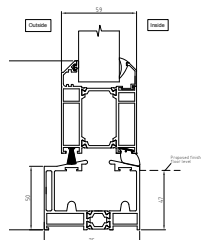
See page 33

8a - Weathered Threshold Detail*



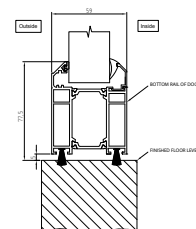
See page 34

8b - Non-weathered Threshold Detail*



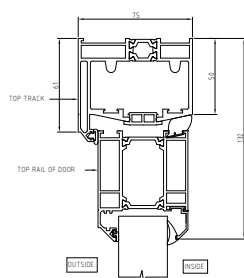
See page 35

8c - No Threshold Detail (Garage doors only)



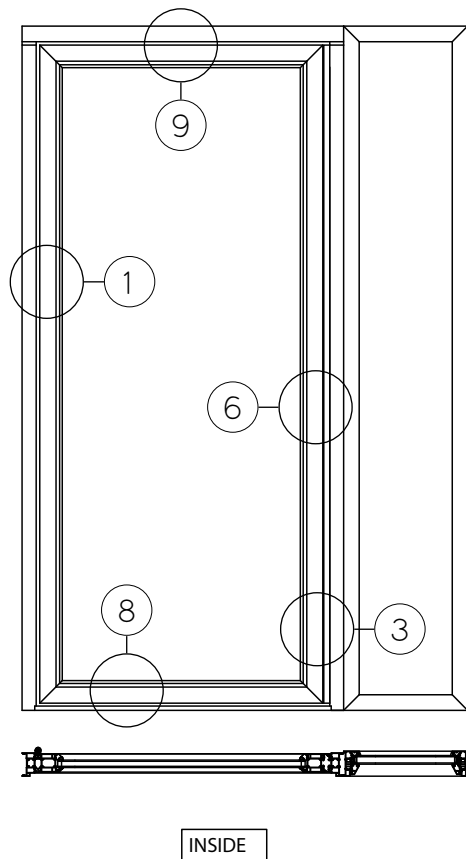
See page 36

9 - Top Track Detail

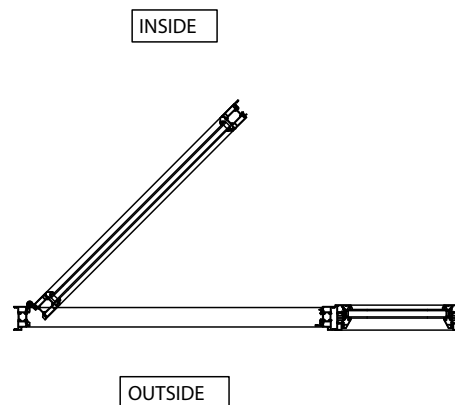


See page 37

Master Configuration Door to Sidelight



See Configuration Key for section detail ▶

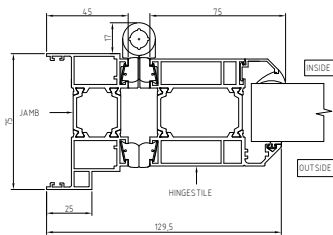


Key features

- ▶ Origin multipoint locking system
- ▶ Door to window coupling
- ▶ Windows can be glazed with 28 & 44mm glass units
- ▶ Matching decorative side panels available

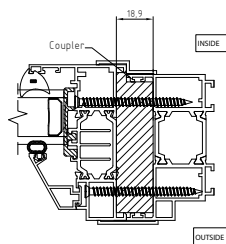
Configuration Key

1 - Hinge Jamb Detail



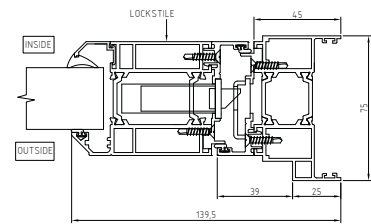
See page 26

3 - Window to Door Jamb Coupler detail



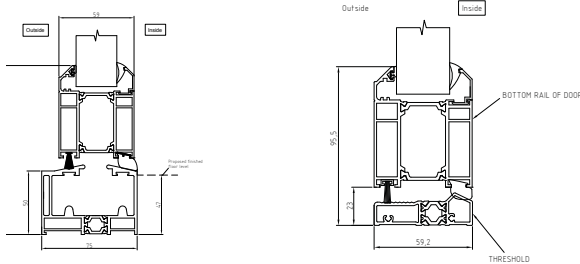
See page 28

6 - Locking Jamb Detail



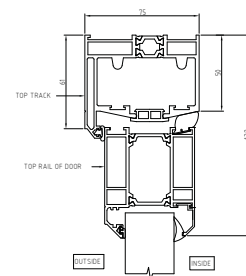
See page 31

8, 8b - Mobility threshold and no-weathered threshold details



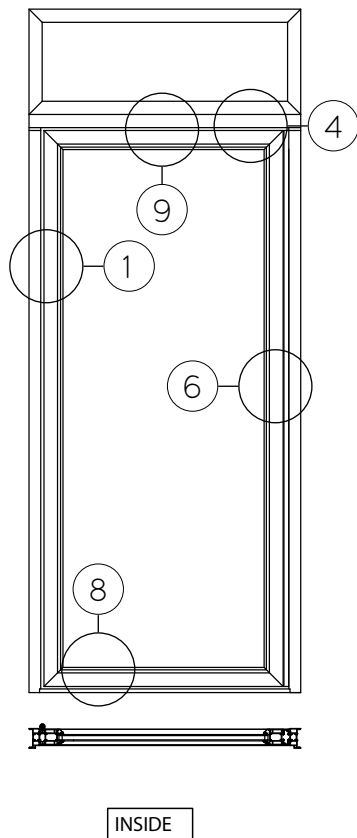
See pages 33 & 35

9 - Top Track Detail

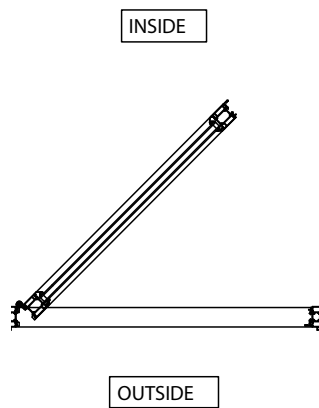


See page 37

Master Configuration Door to Transom



See Configuration Key for section detail ►

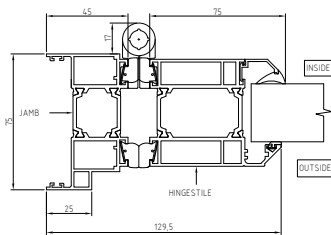


Key features

- Origin multipoint locking system
- Door to window coupling
- Windows can be glazed with 28 & 44mm glass units
- Matching decorative side panels available

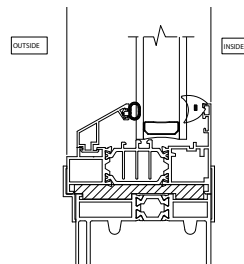
Configuration Key

1 - Hinge Jamb Detail



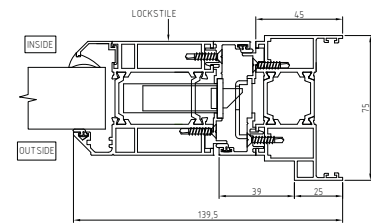
See page 26

4 - Window to Track Coupler detail



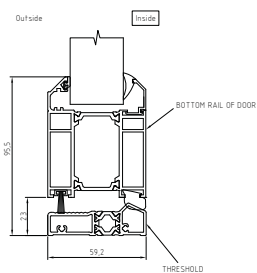
See page 29

6 - Locking Jamb Detail



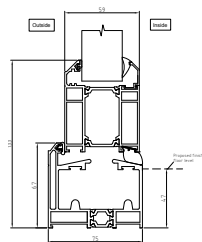
See page 31

8 - Mobility Threshold Detail



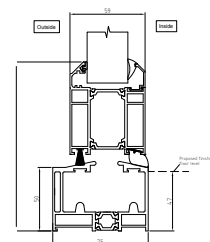
See page 33

8a - Weathered Threshold Detail



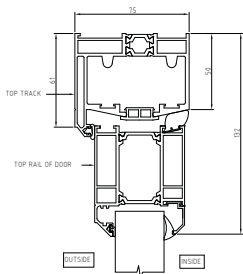
See page 34

8b - Non-weathered Threshold Detail



See page 35

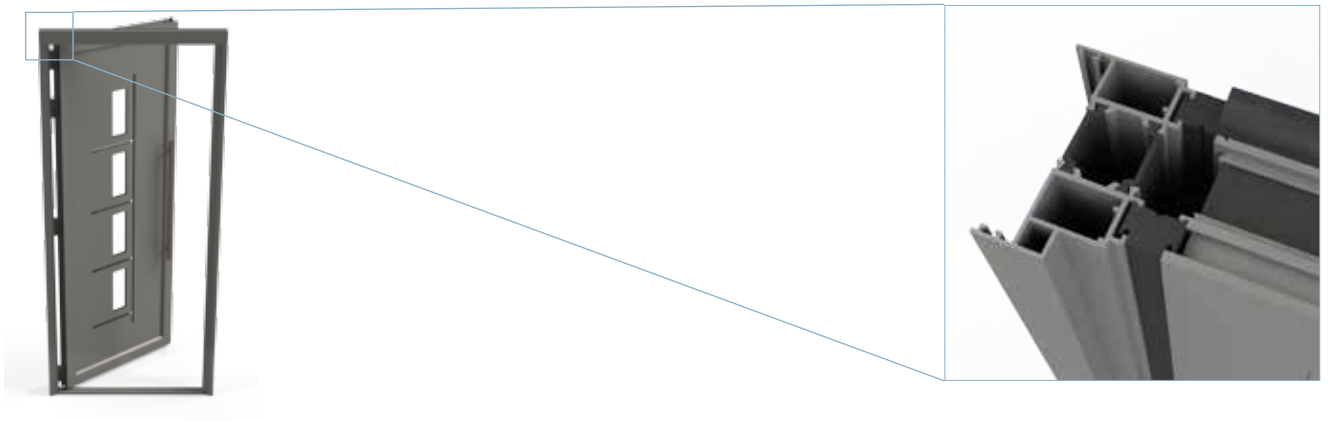
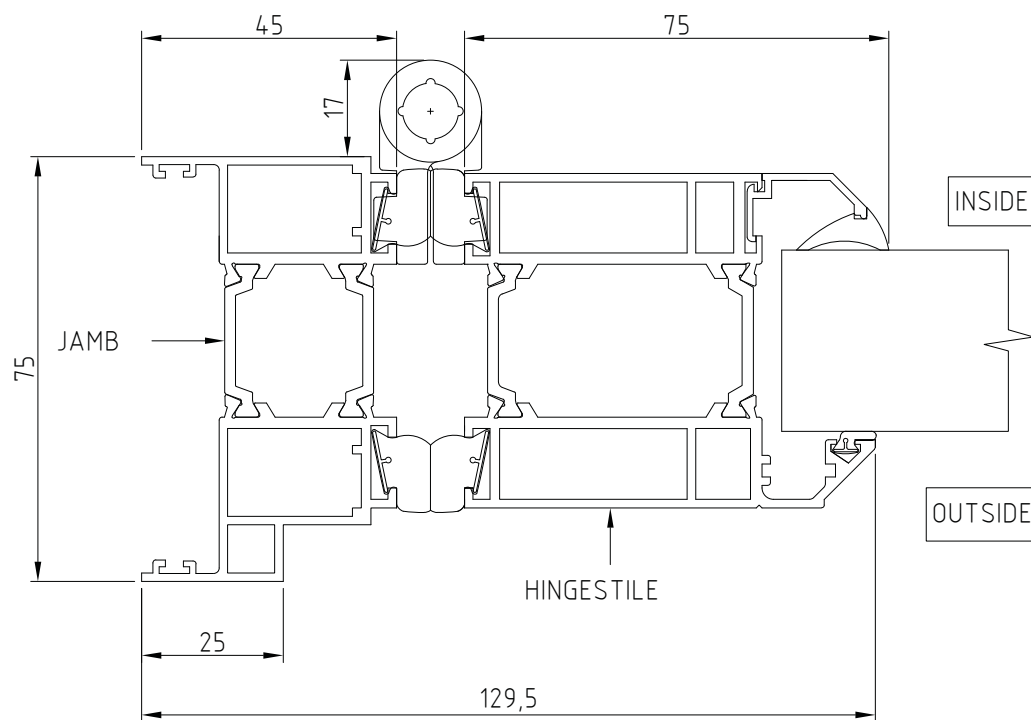
9 - Top Track Detail



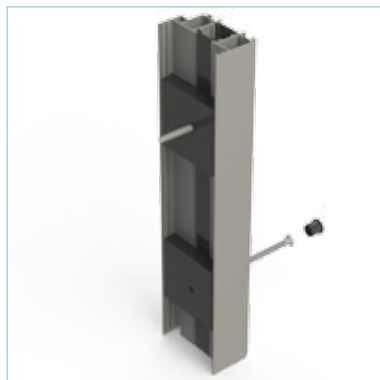
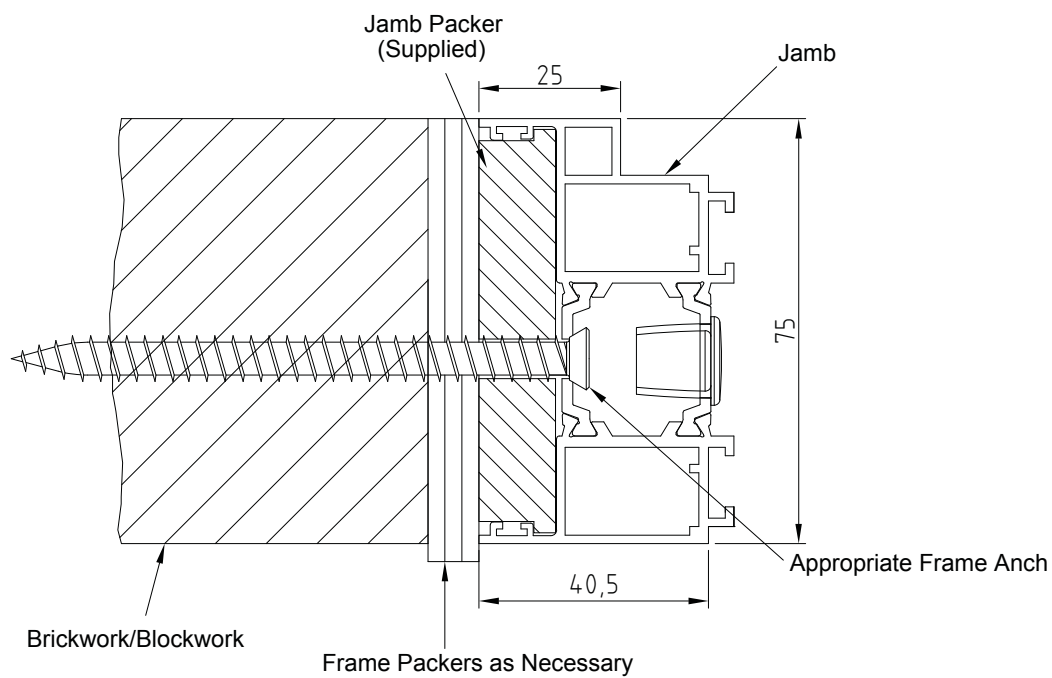
See page 37

Technical drawings

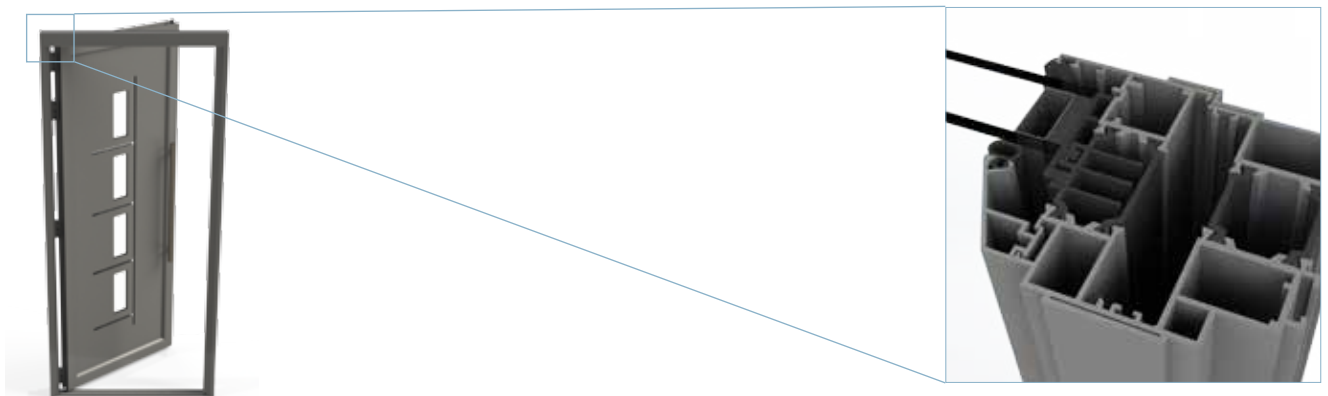
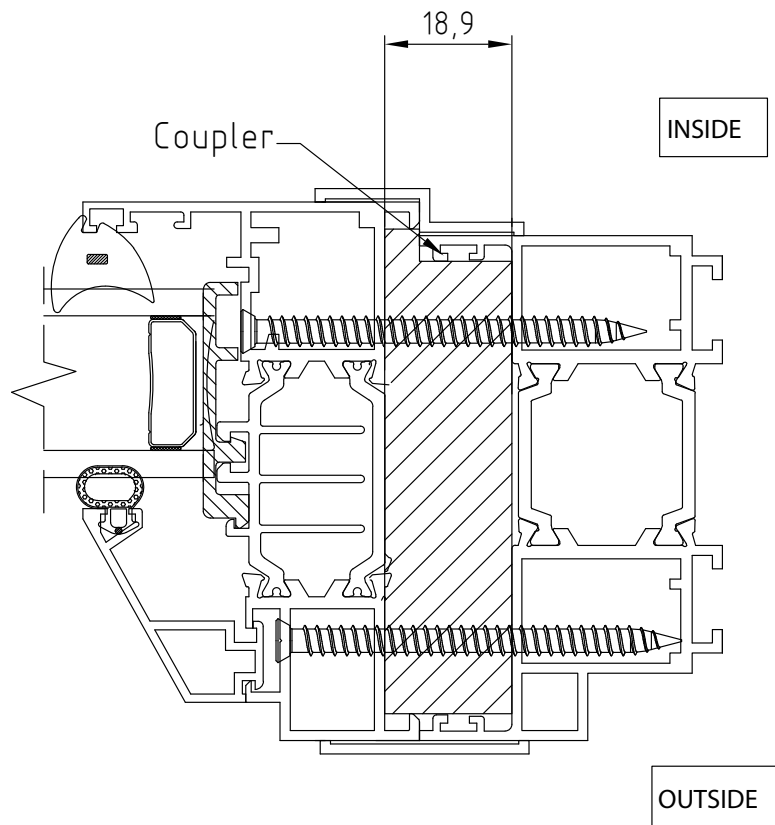
1 Hinge Jamb Detail



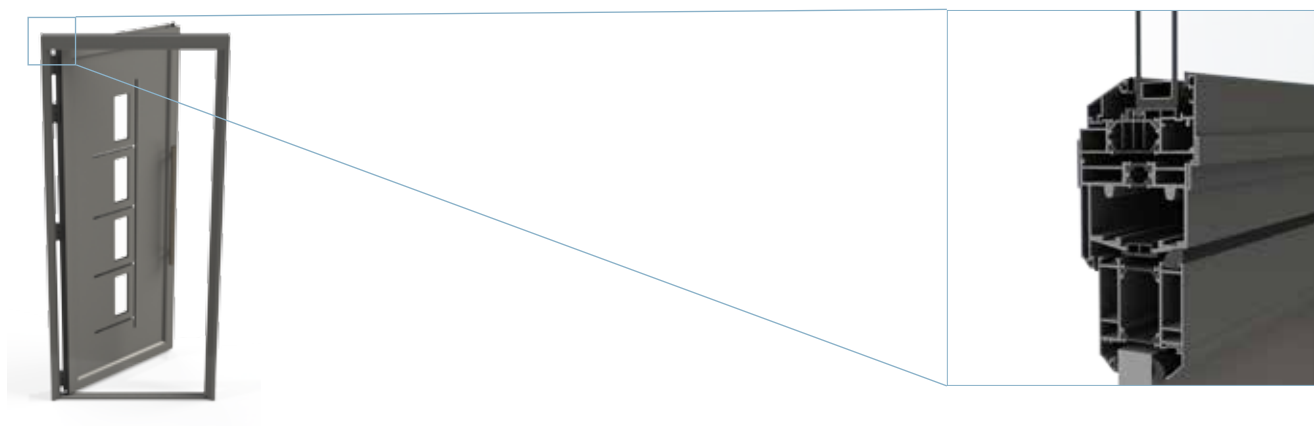
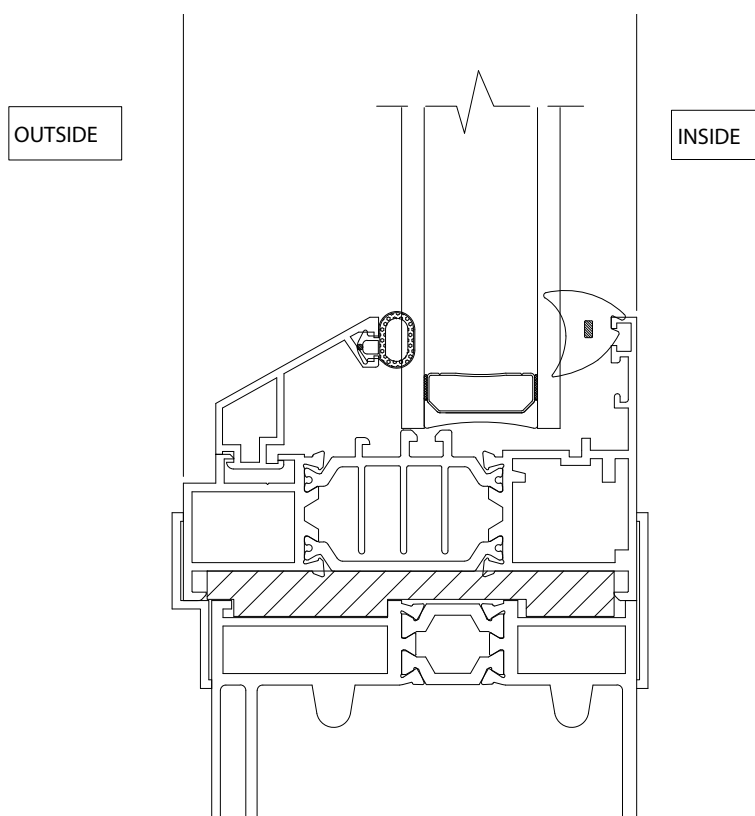
2 Jamb Fixing Detail



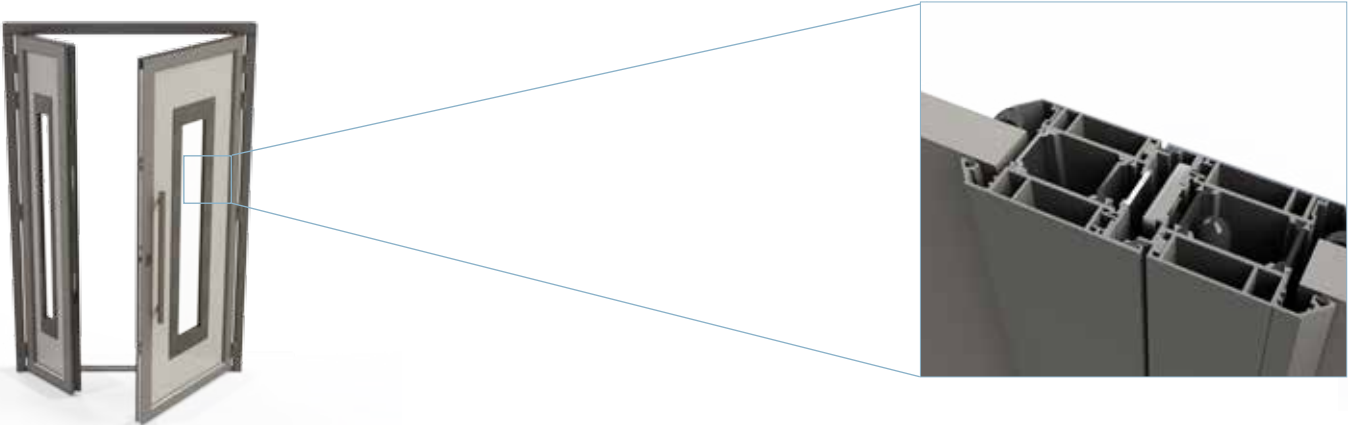
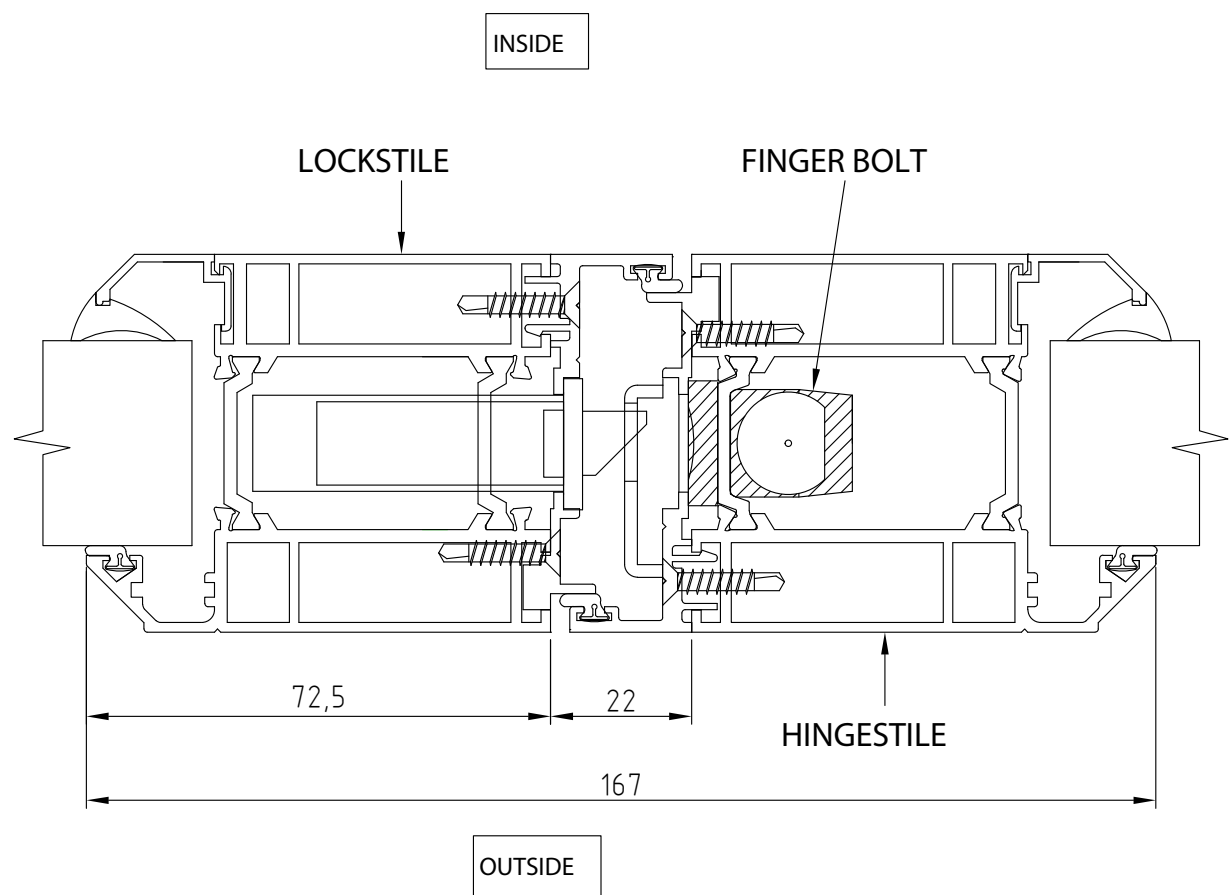
3 Window To Door Jamb Coupler Detail



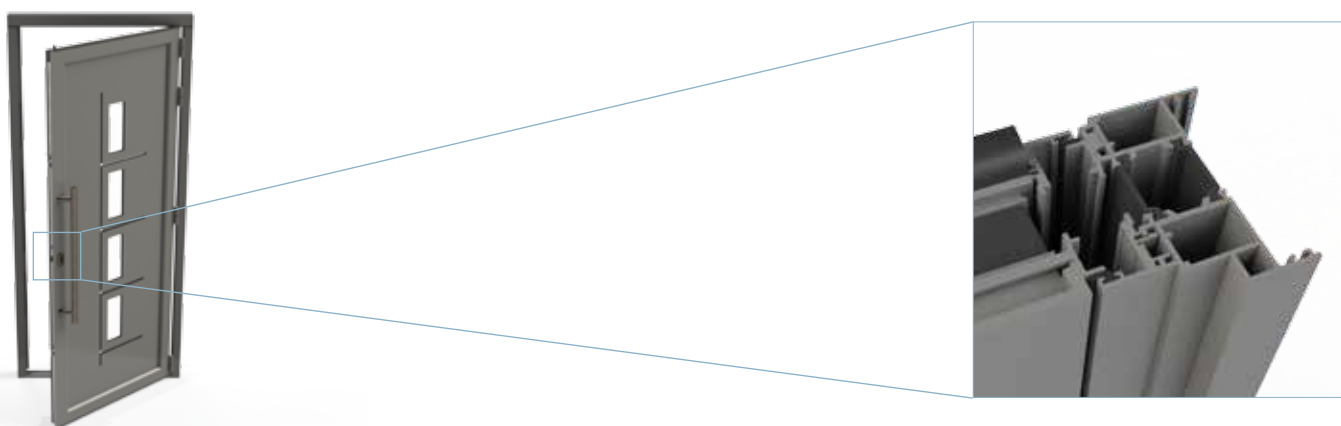
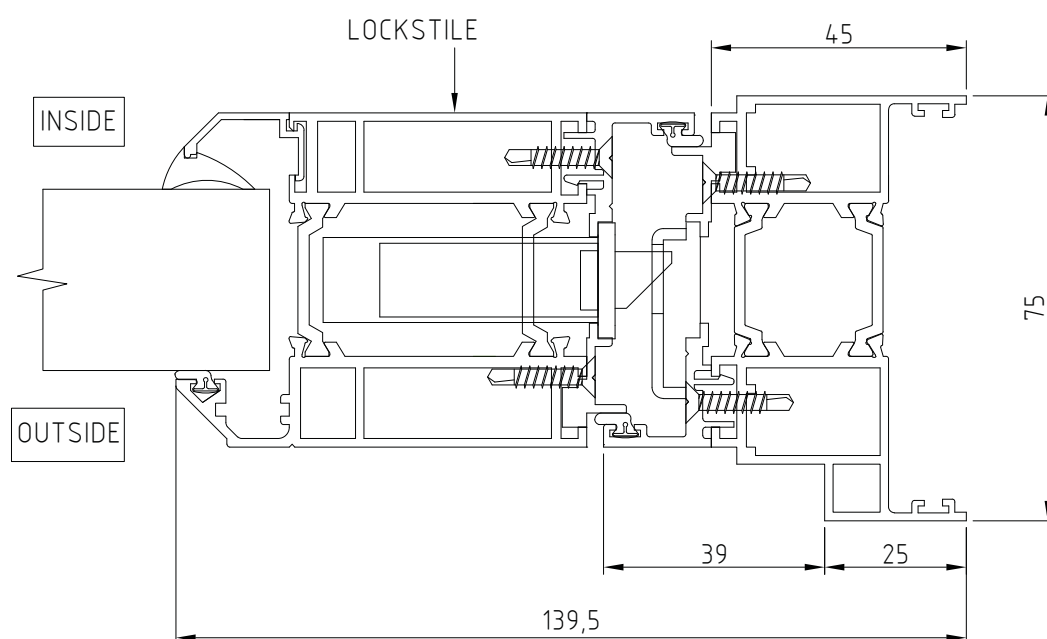
4 Window To Track Coupler Detail



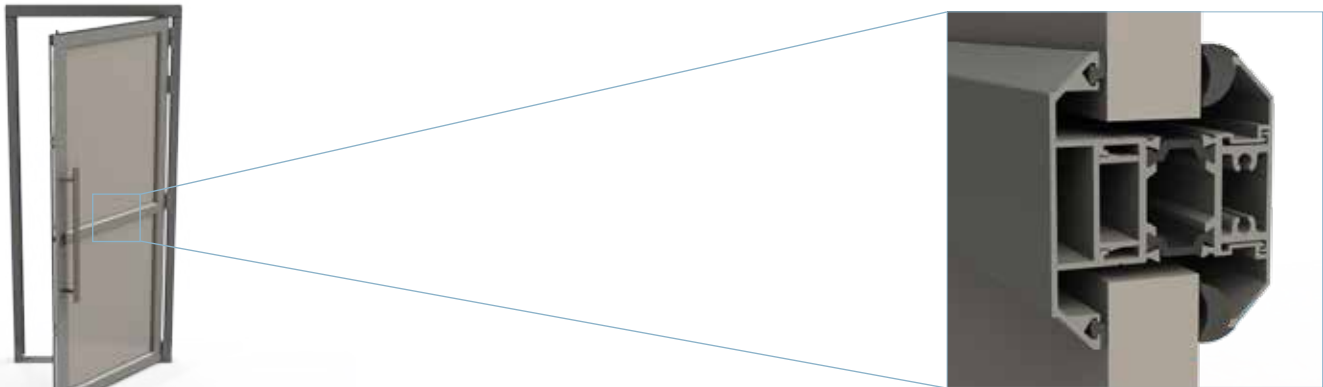
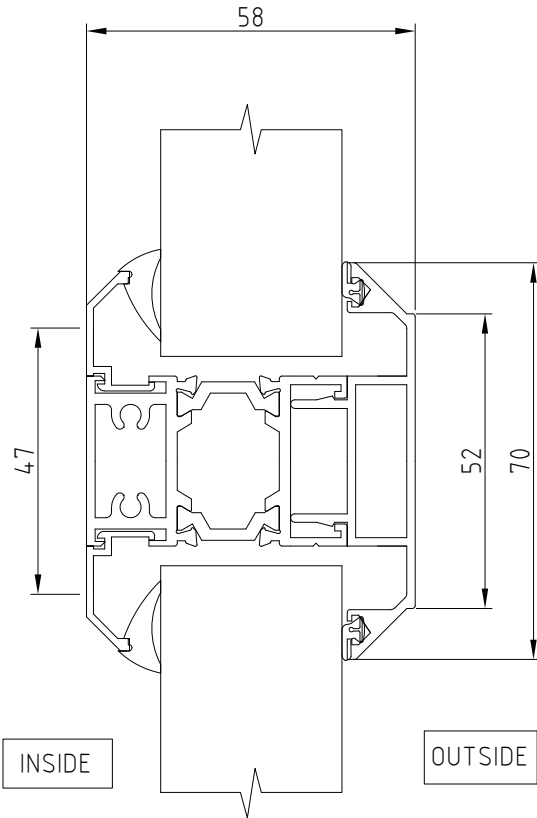
5 Locking Slave Detail



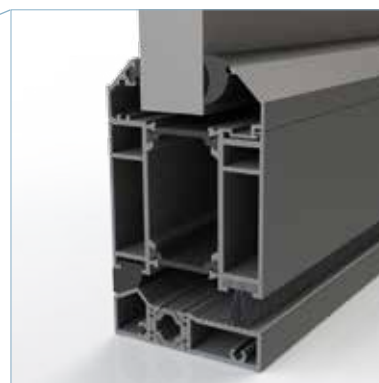
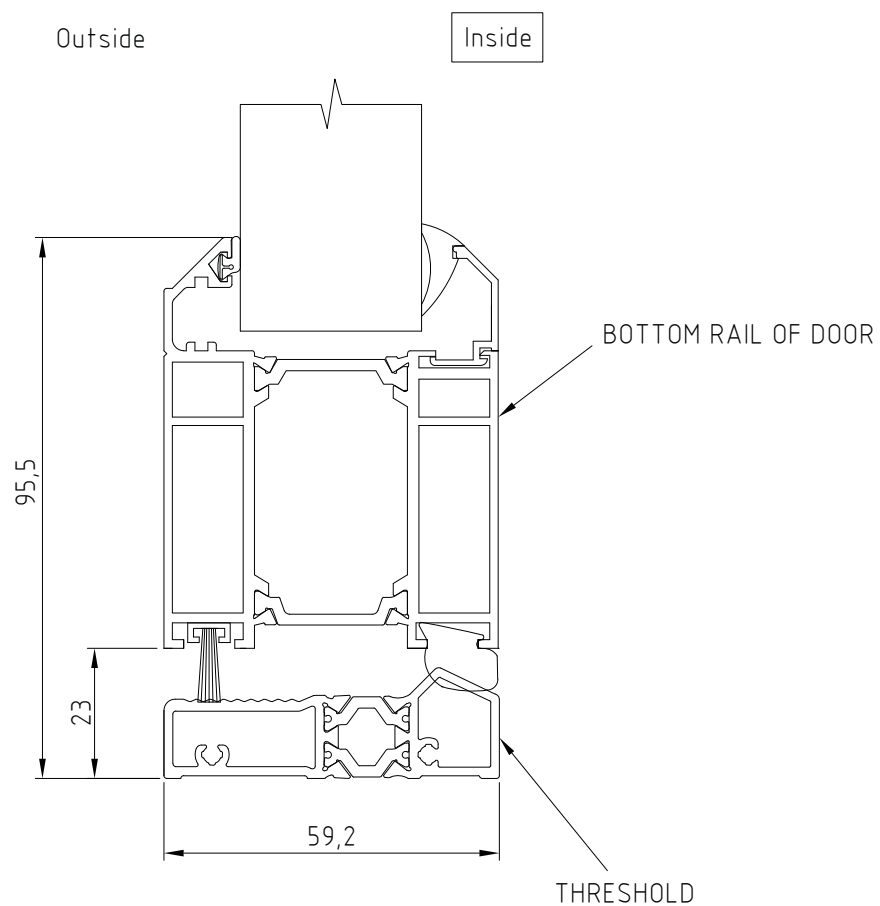
6 Locking Jamb Detail



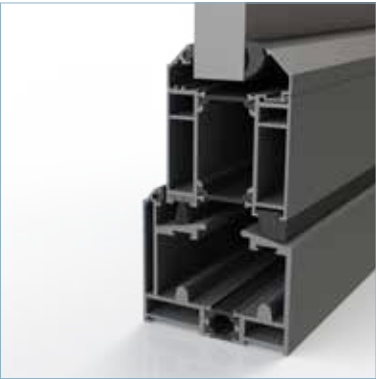
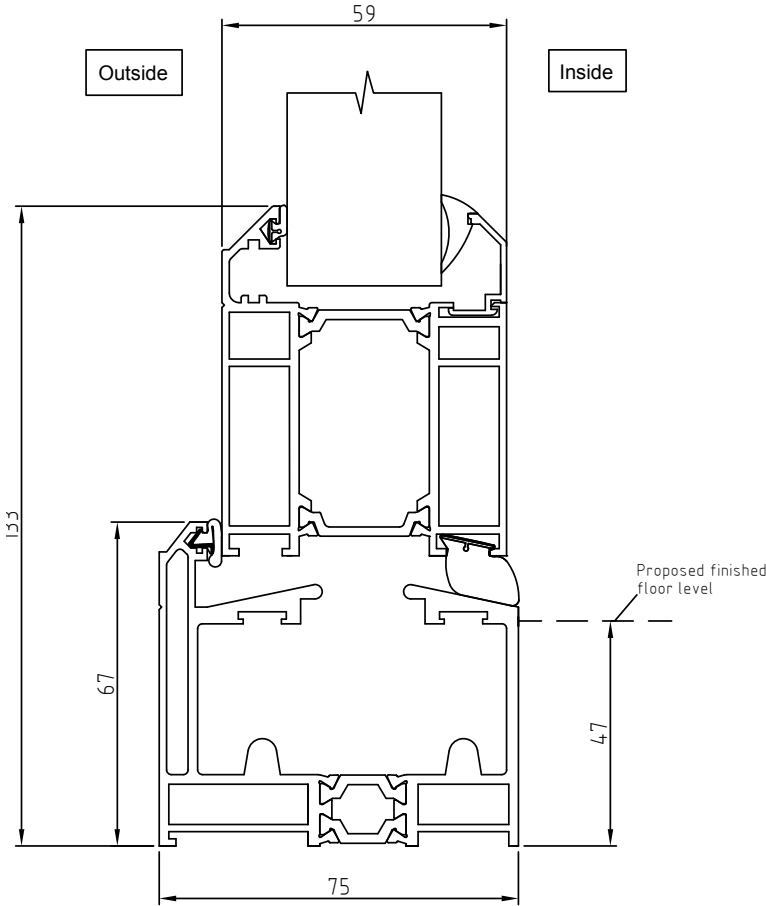
7 Midrail Detail



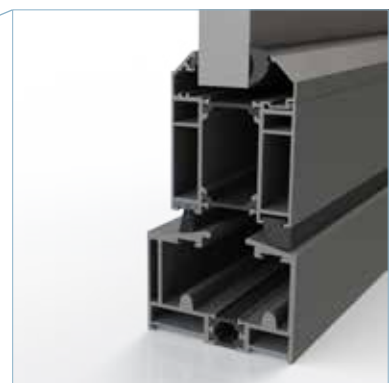
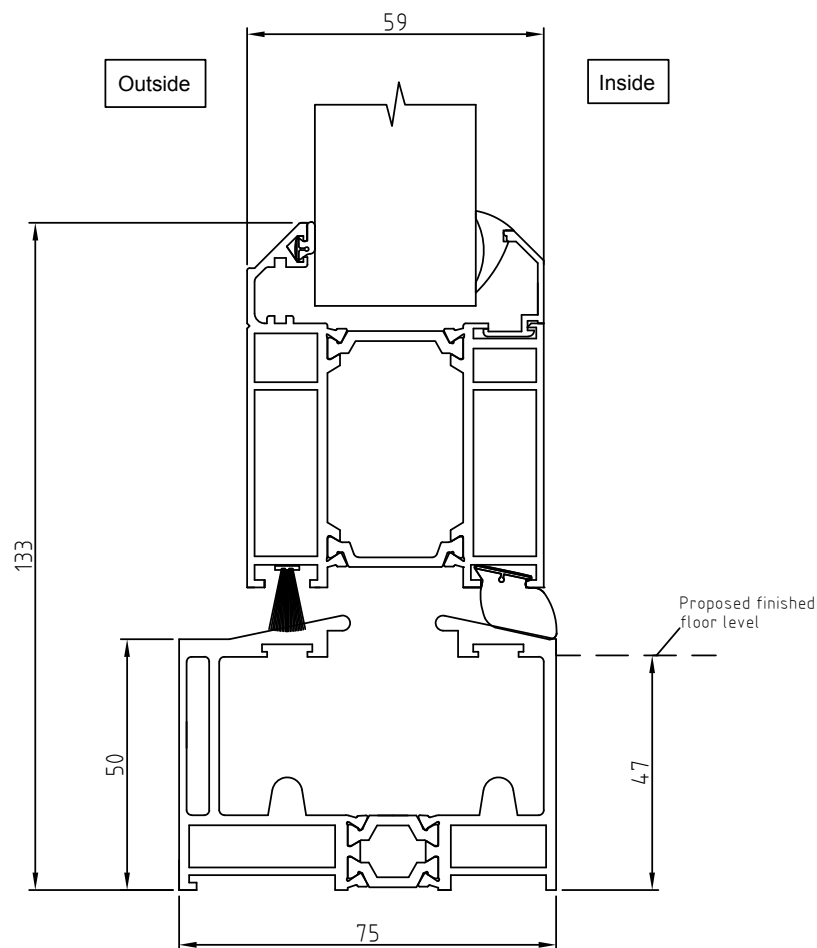
8 Mobility Threshold Detail



8a Weathered Threshold Detail

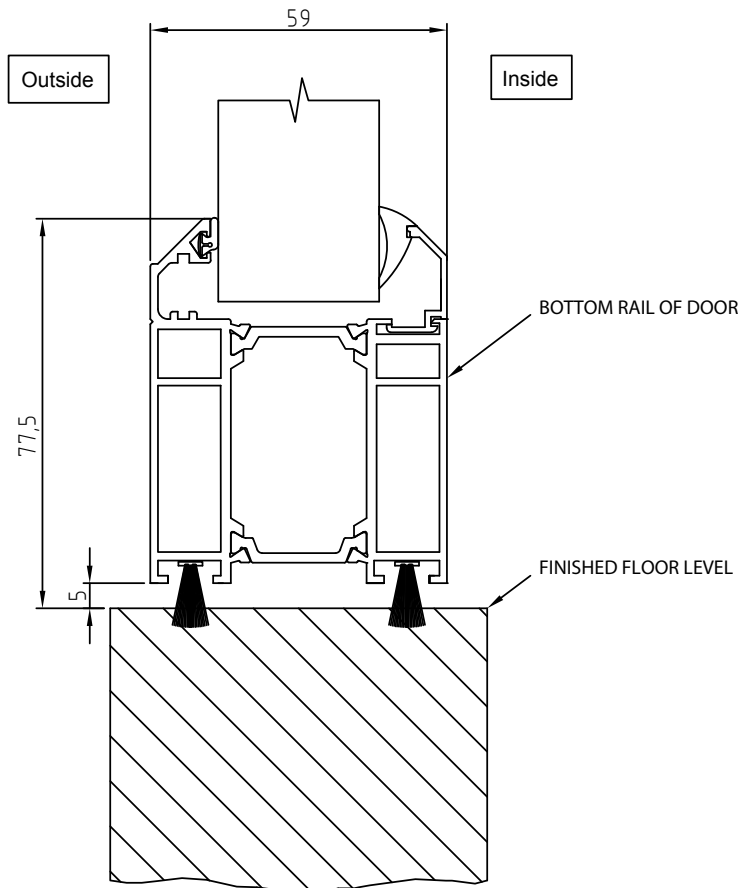


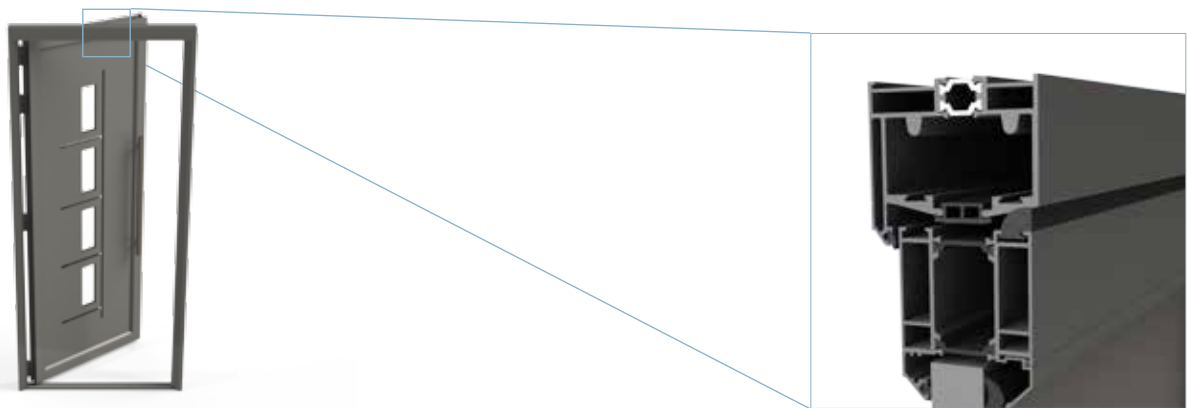
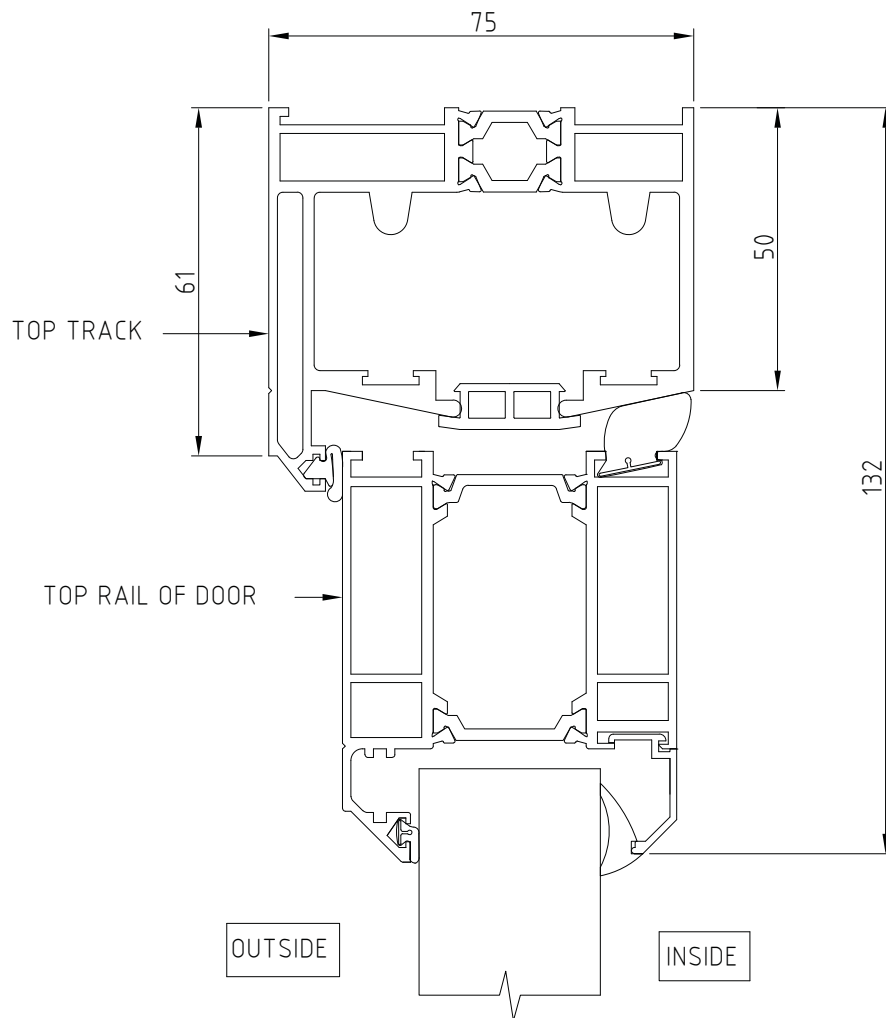
8b Non-weathered Threshold Detail



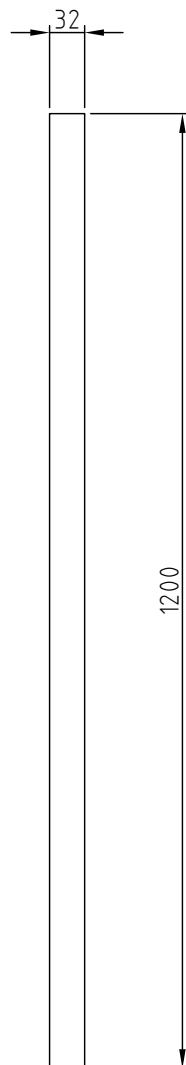
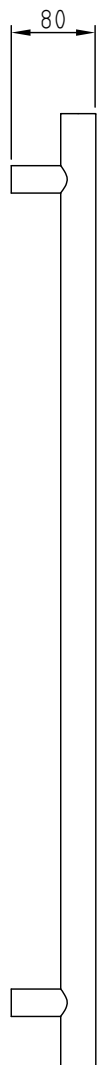
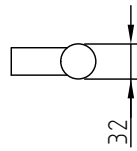
8c No Threshold Detail

(Garage door only)

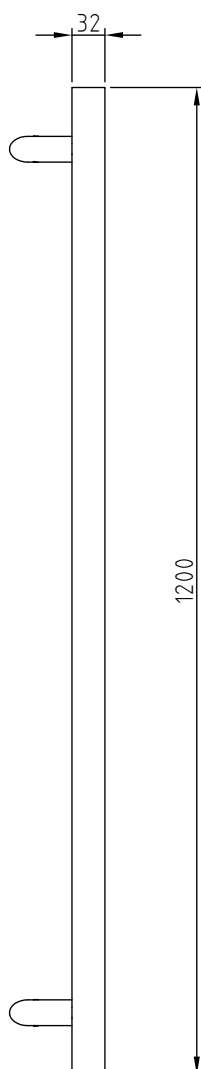
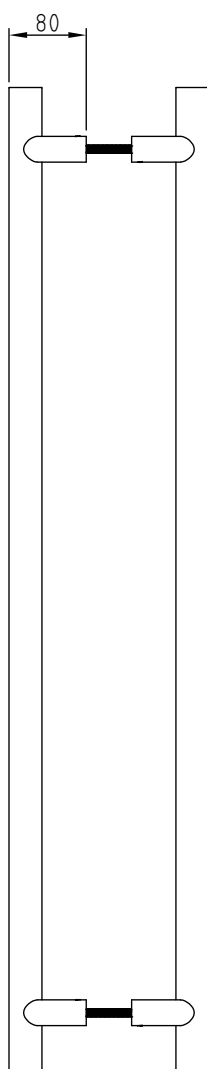
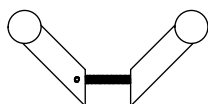




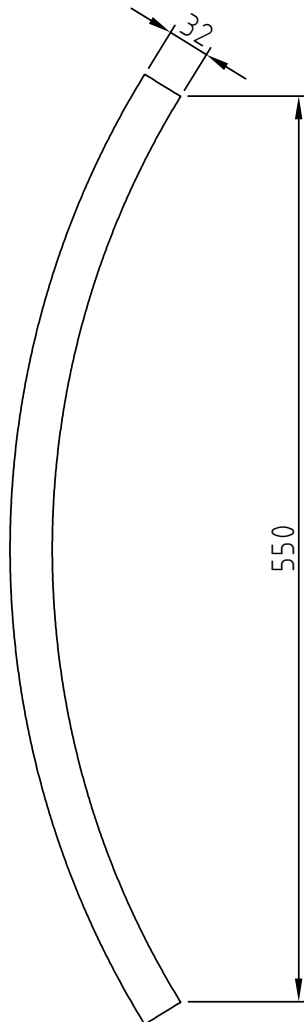
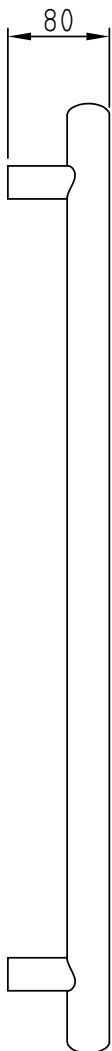
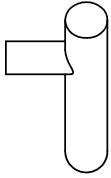
10 Hafı Straight Bar Handle



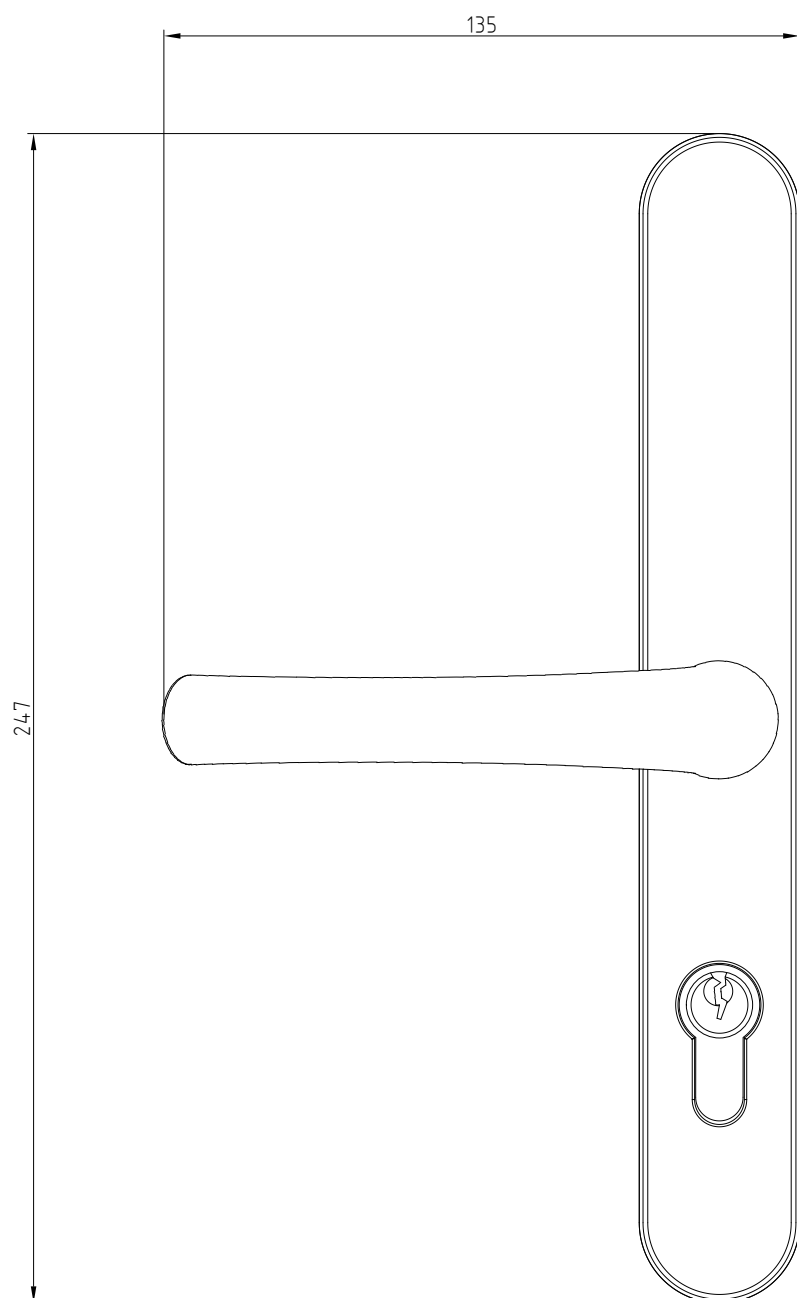
11 Hafli Offset Bar Handle



12 Bow Bar Handle



13 Standard Yale Lever Handle



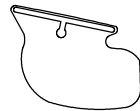
Available in 4 popular colours: white, chrome, black and gold.

Gaskets

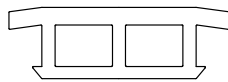
Door Gaskets

QL9135

Black, white,
colour-coded

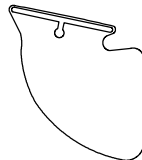


TRACK GAP
GASKET



QL9141

Black, white,
colour-coded



BRUSH STRIP 11mm



QL4636

Black



BRUSH STRIP 13mm



QL9257

Black, white,
colour-coded



QL9135, QL9141 and
QL9257 are available in
the following colours:

Black, white, graphite grey,
light grey, light oak, bronze
and chestnut brown

Double Glazing Gaskets 24mm & 28mm

E3434

Black, white,
colour-coded



W474

Black, white,
colour-coded



E3434, W474 and W488
are available in the
following colours:

Black, white, 7015, 7016,
light grey, light oak, bronze
and chestnut brown

Triple Glazing Gaskets 32mm

QL4627

Black



W488

Black, white,
colour-coded



Window Glazing Gaskets

GLAZING REBATE B2018

Black

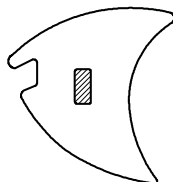


W473P and W474 are available in the following colours:

Black, white, 7015, 7016, light grey, light oak, bronze and chestnut brown

FRAME WEDGE 28MM W473P

Black, white, colour-coded

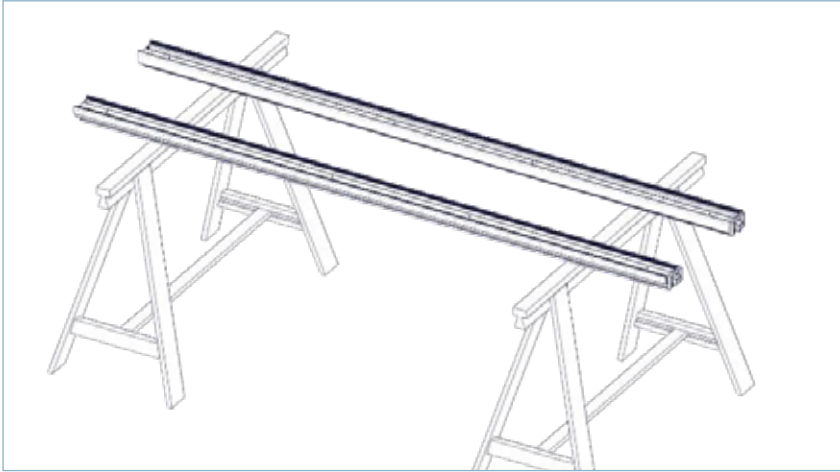


FRAME WEDGE 44MM W474

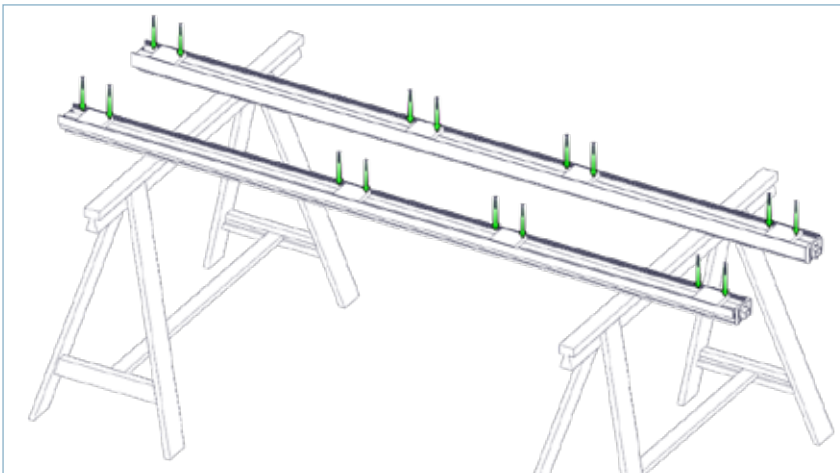
Black, white, colour-coded



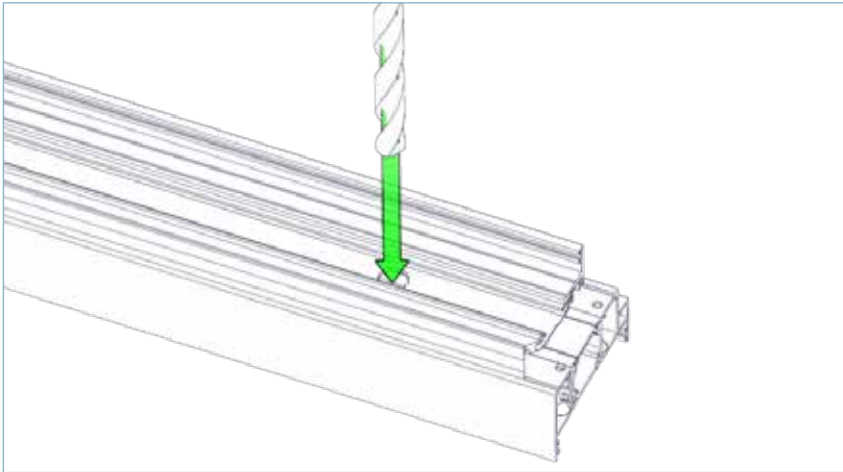
Residential Door Installation Guide



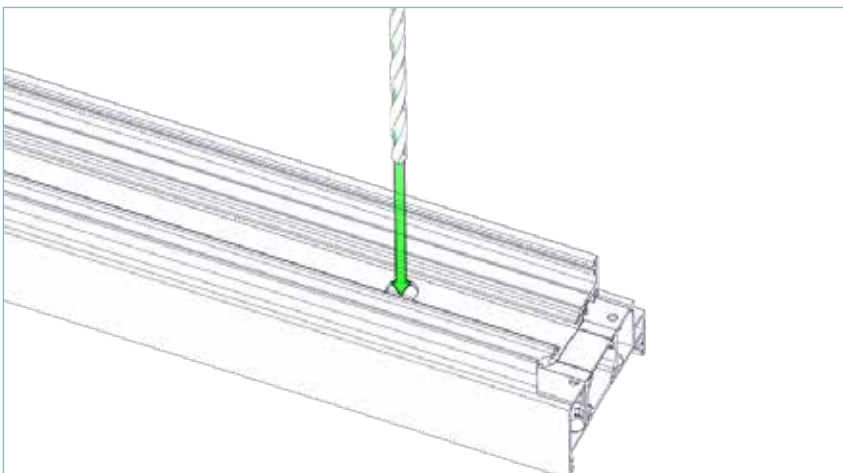
1. Lay jambs on a flat surface, preferably a pair of trestles.



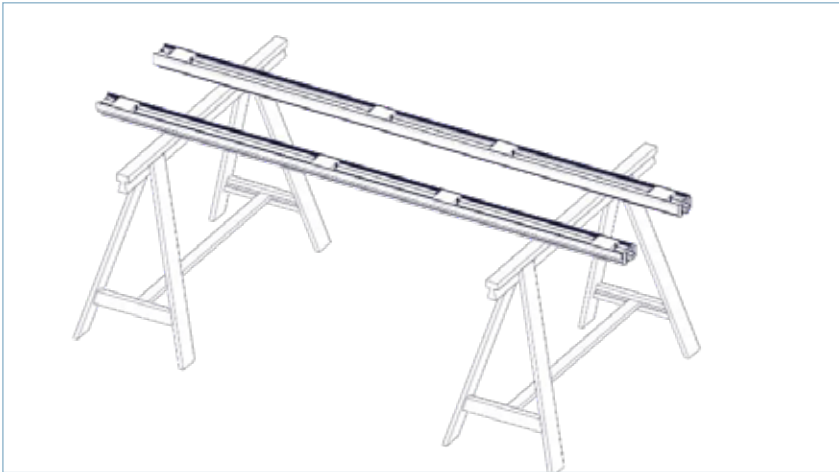
2. Secure the jamb packers using a 25mm self-tapping screw either side. Ensure each of the jamb packers are positioned and secured correctly. Position fixings within 150mm of the corner. Centre fixings should be spaced 600mm apart thereafter.



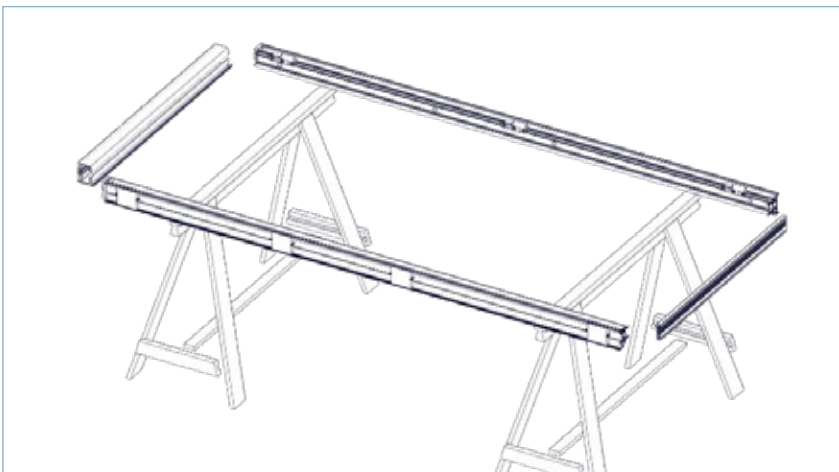
3. From the bottom of the jamb, measure and then drill fixing holes through the first layer of polyamide using a 13mm drill bit. Making sure the hole aligns with the centre of each jamb packer.



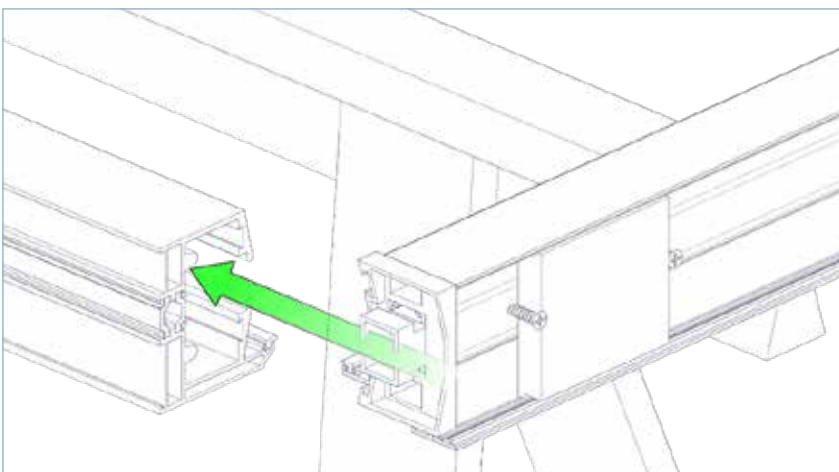
4. Then, through the 13mm hole, drill an 8mm hole through the remaining jamb and jamb packer.



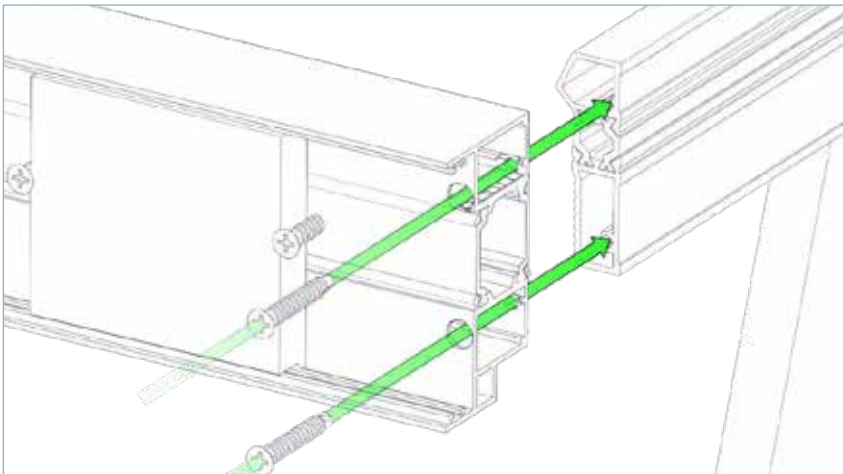
5. The jambs are now prepped and ready for assembly.



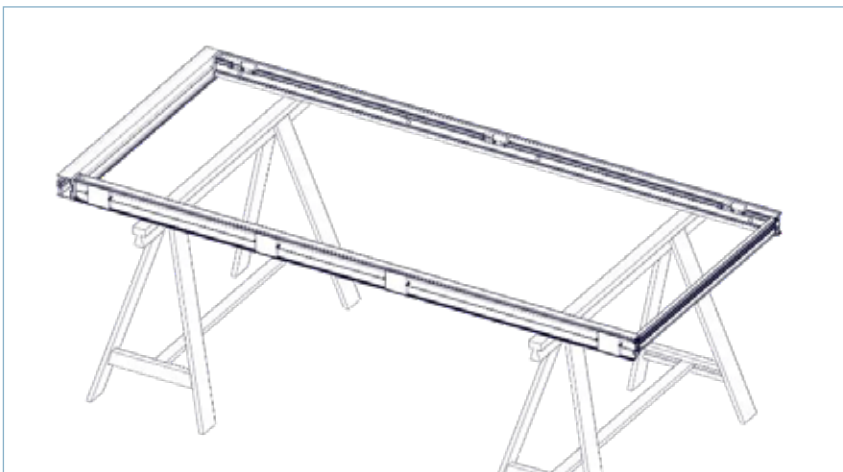
6. Still using the trestles, you now need to assemble the outer frame.



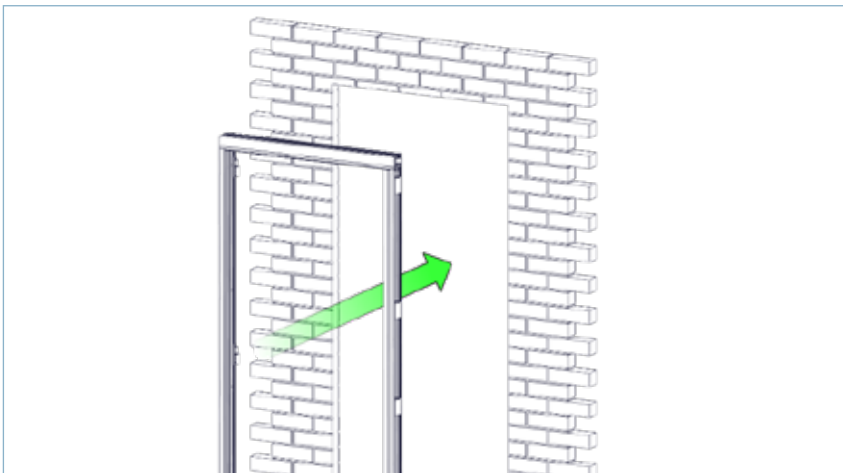
7. Starting with the top, slide the two jambs into the top track.



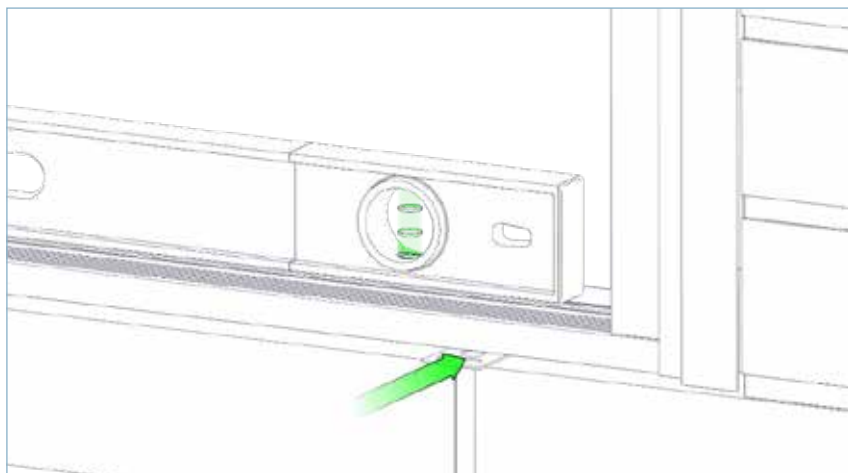
8. For mobility threshold secure the jambs to the threshold using two of the supplied 3.5mm screws. Seal the mating faces with silicone. If it is a standard threshold, repeat step 7.



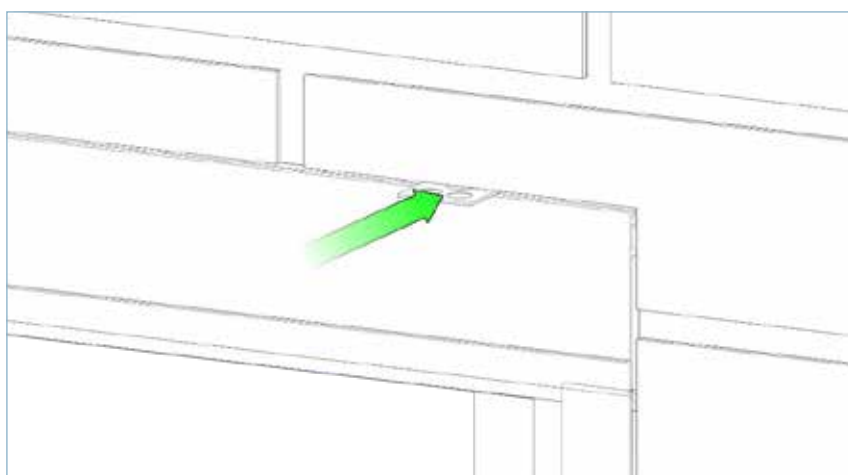
9. The outer frame should now be assembled and secured together.



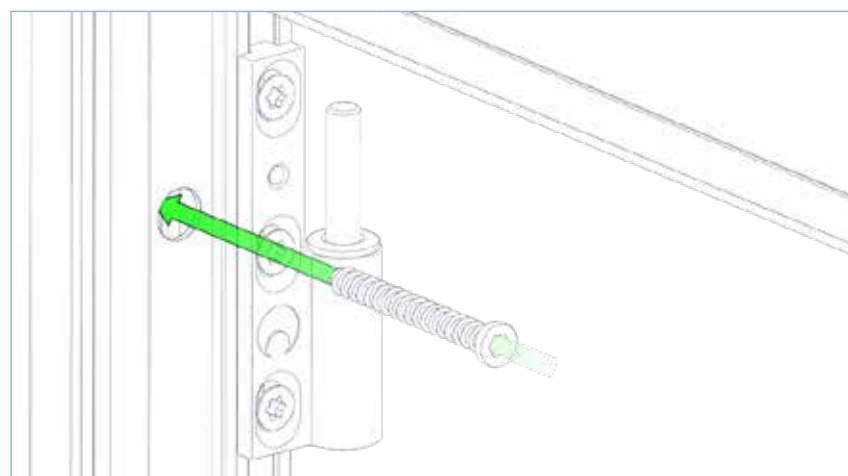
10. Position the outer frame into the opening being careful not to scratch any of the profile



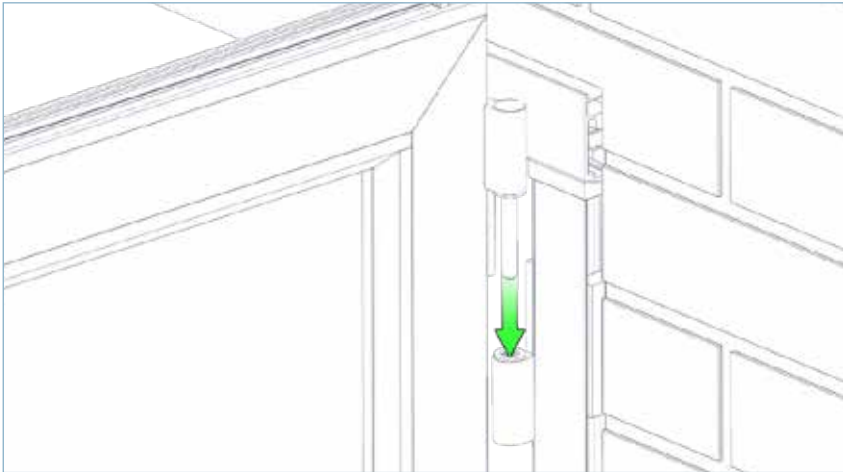
11. First, using frame packers, ensure the threshold is perfectly level.



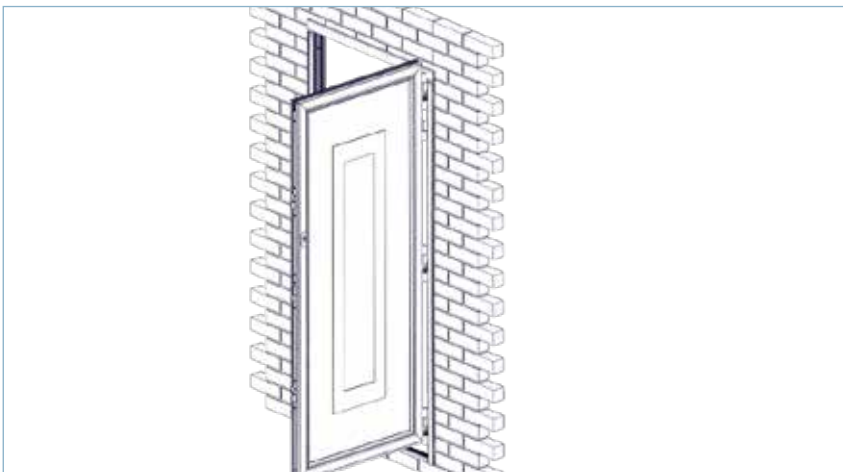
12. When the threshold is perfectly level, pack out the top of the frame using the appropriate packers. Ensure this is tight but not over compressing the jamb to track connectors.



13. Starting with the hinge side, pack out the jamb so it is perfectly level and secure through the fixing holes prepared earlier using appropriate fixings.



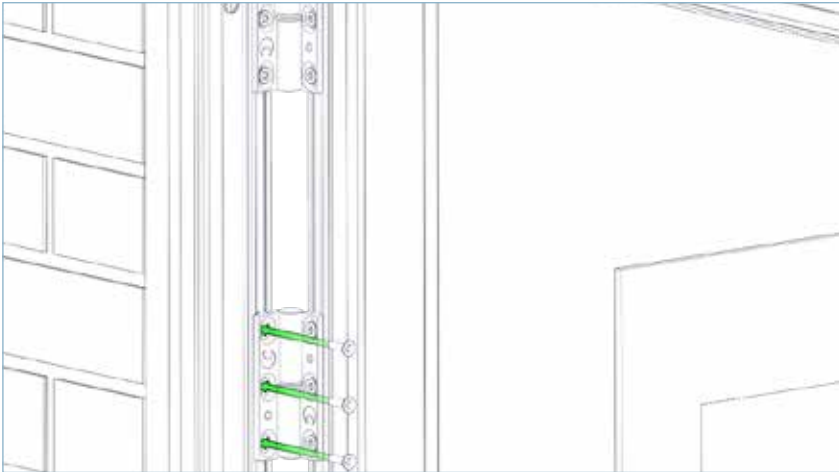
14. Once the jambs are securely fixed into place, carefully unwrap the sash and lift onto the jamb using the hinge pins to locate it.



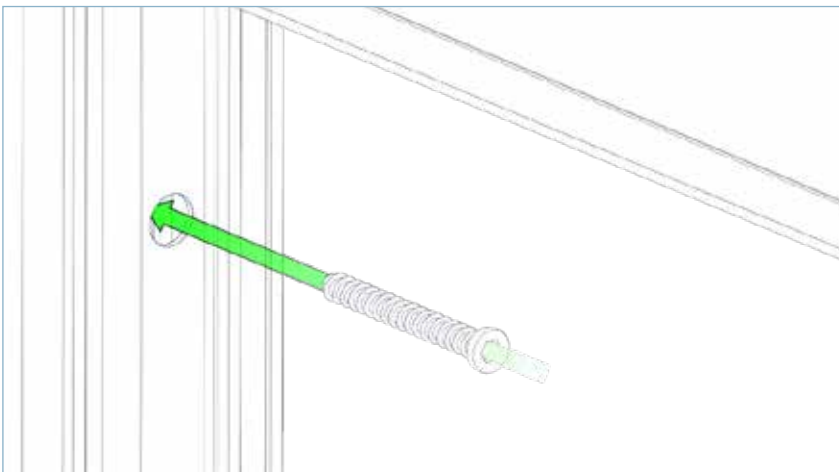
15. Check all the hinge pins are correctly engaged in the hinges.



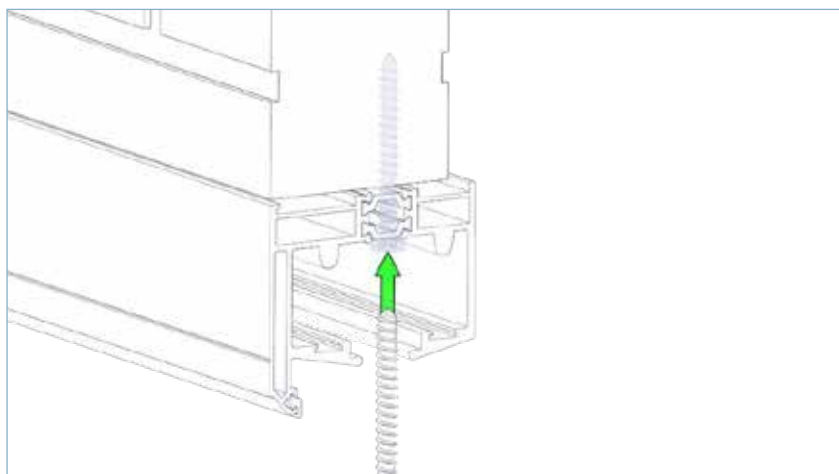
16. Find the separately provided hinge leaf and slide onto the exposed hinge pin.



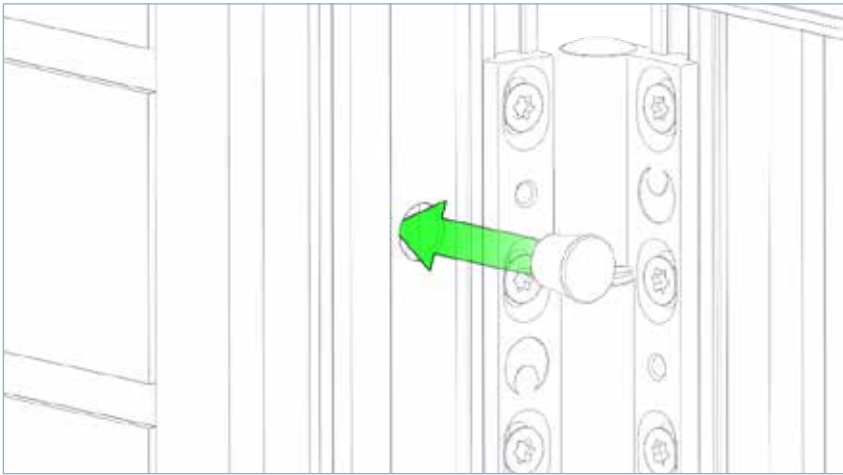
17. Carefully secure the hinge leaf to the jamb using the provided screws.



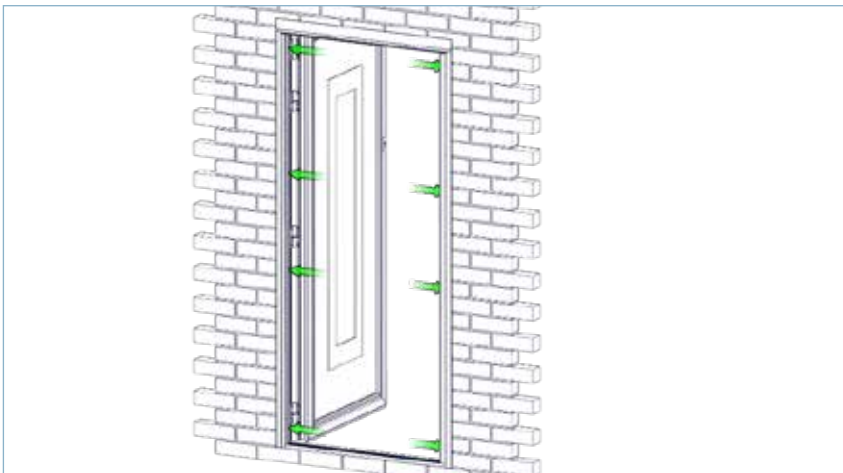
18. Using the door as a gauge, ensure the locking jamb runs parallel to the edge of the door with the correct spacing (approximately 4mm). Once this is achieved, pack out the jamb and secure using appropriate fixings.



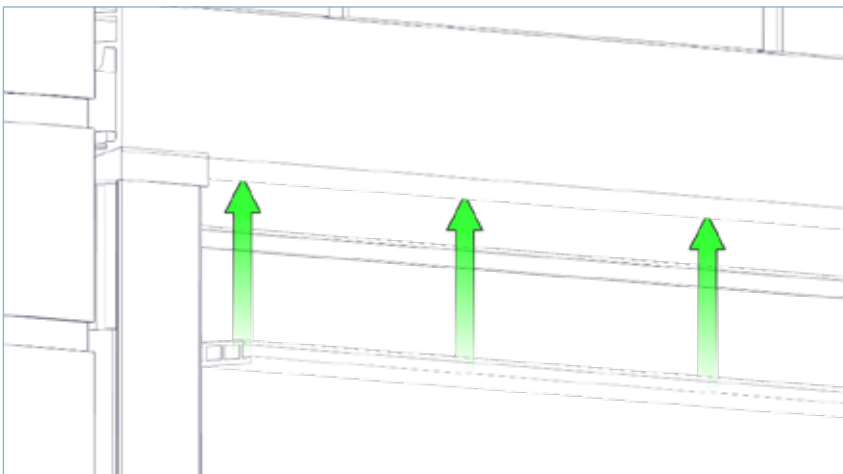
19. Using appropriate fixings, secure the top track through the polyamides. Fixings should be positioned approximately 150mm in from each jamb and no more than 600mm thereafter.



20. Insert the fixing plugs to cover up the fixing holes in the jambs.



21. Ensure they are all covered.

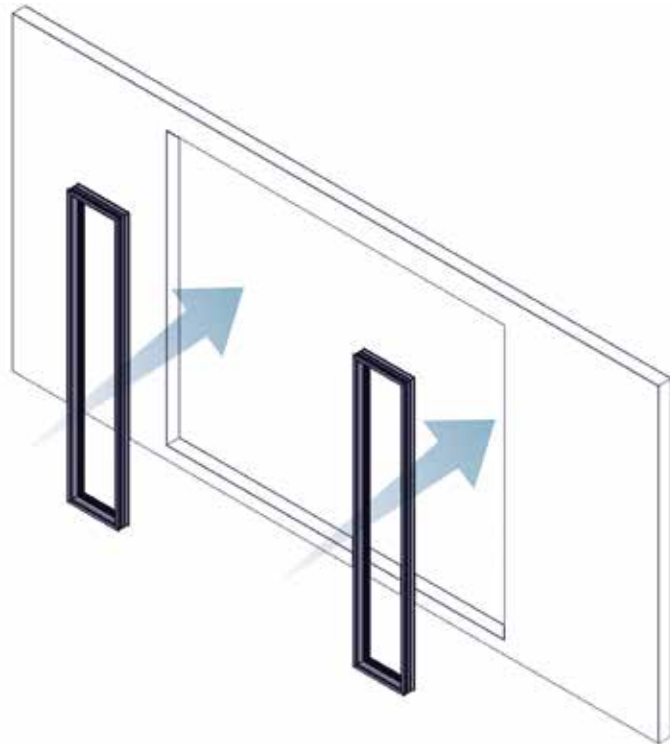


22. Insert the track gap gasket in to the bottom edge of the track.

Window to Jamb Coupler Installation Guide

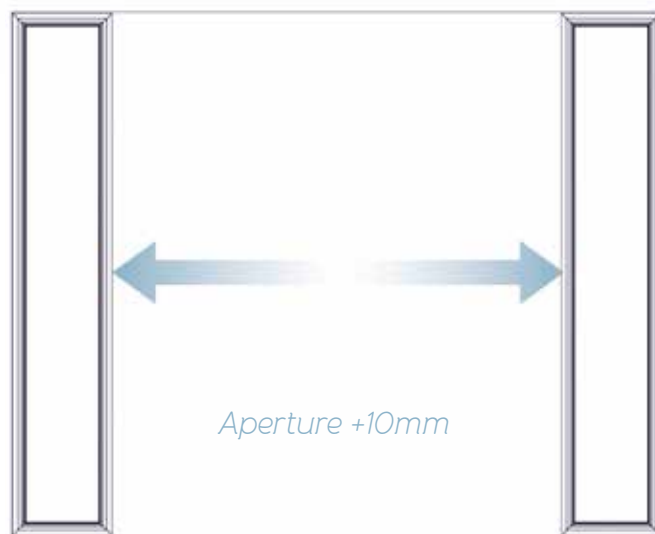
Window to jamb coupler

Install the windows as described in the Origin Installation Guide

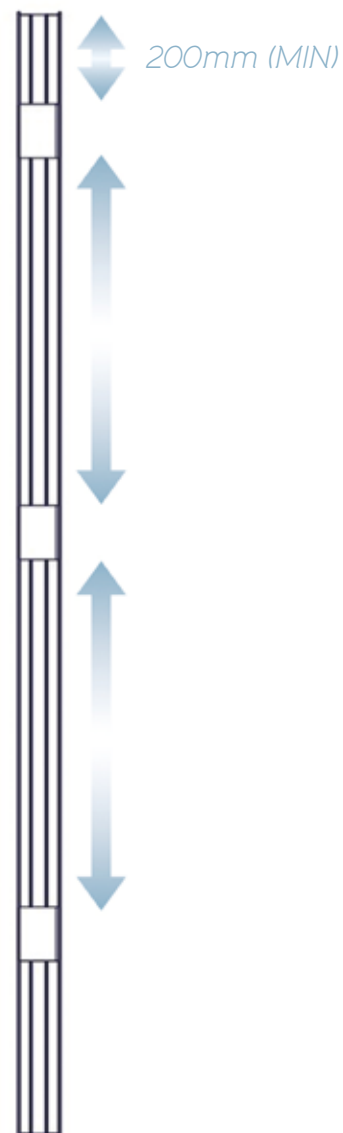
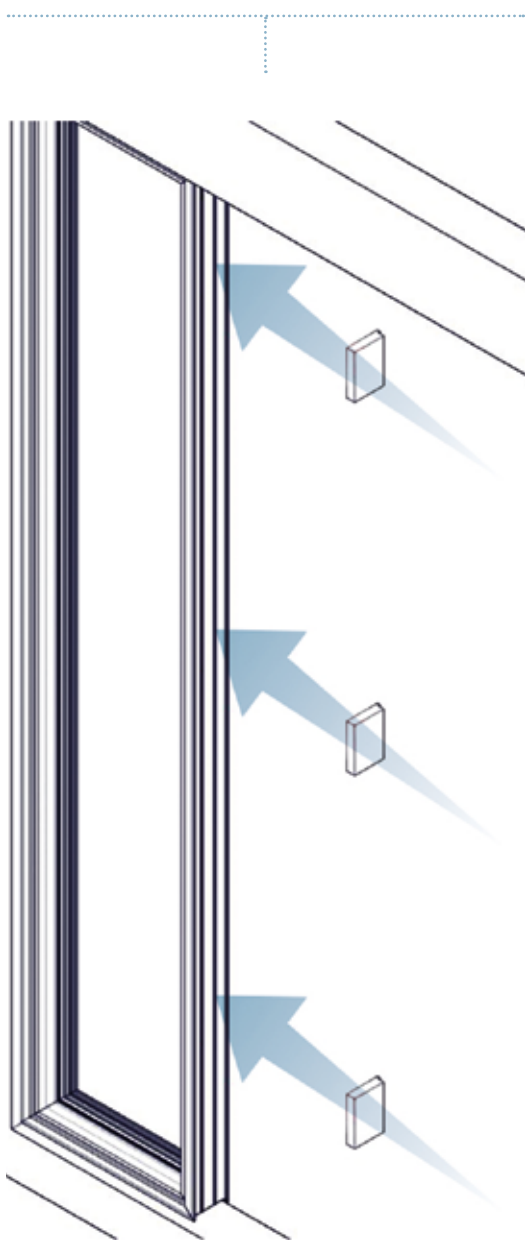


Ensure the overall width from window to window is 10mm larger than the door aperture size

Do not install the glass



Install the alignment block onto the window frame



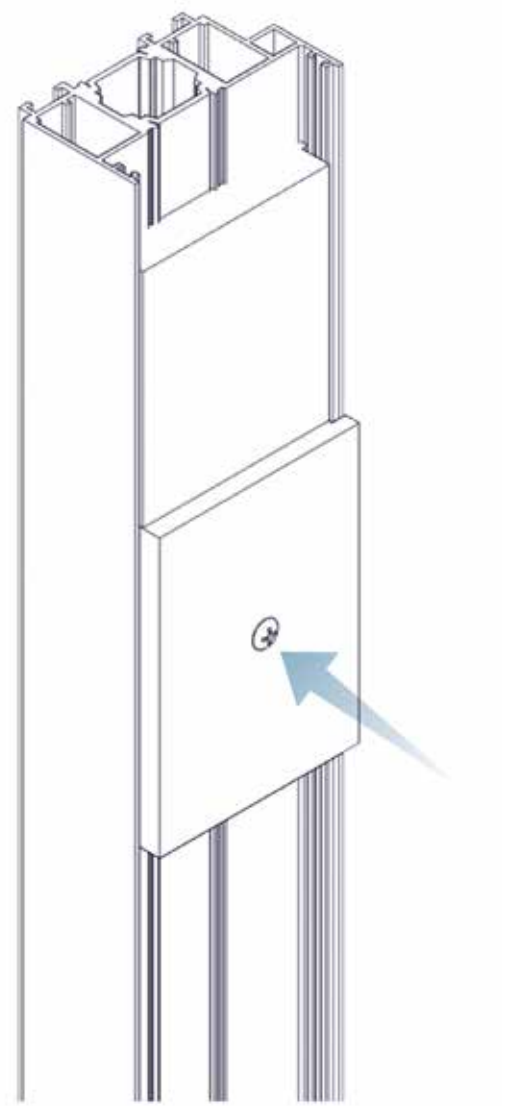
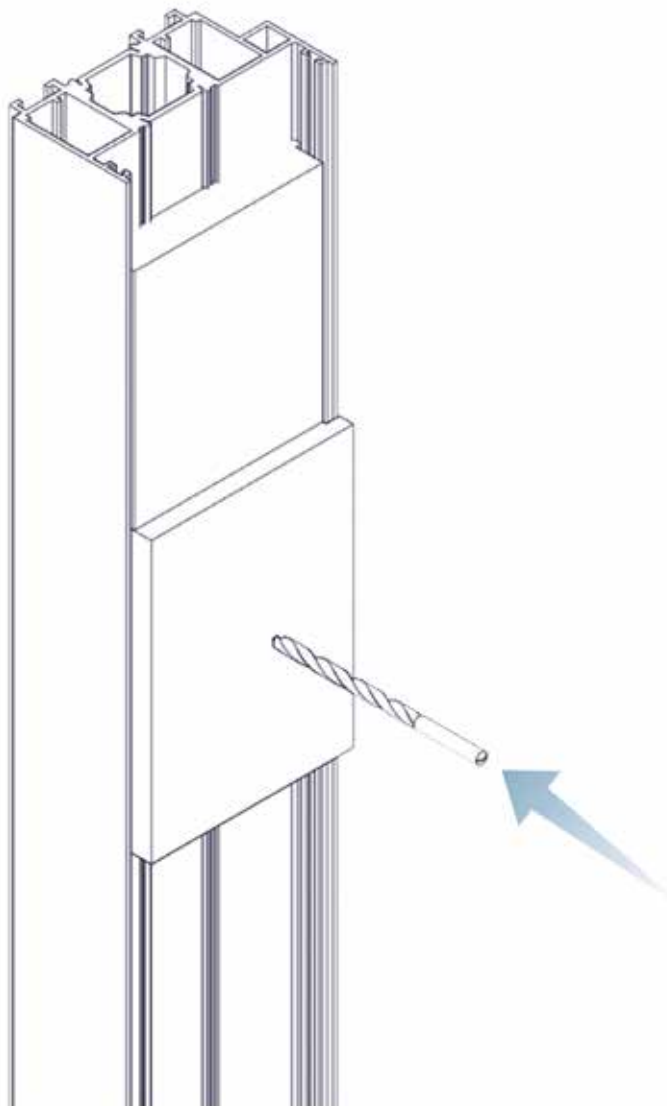
Leave a minimum of 200mm for the first alignment block and evenly space the remaining blocks

Window to jamb coupler

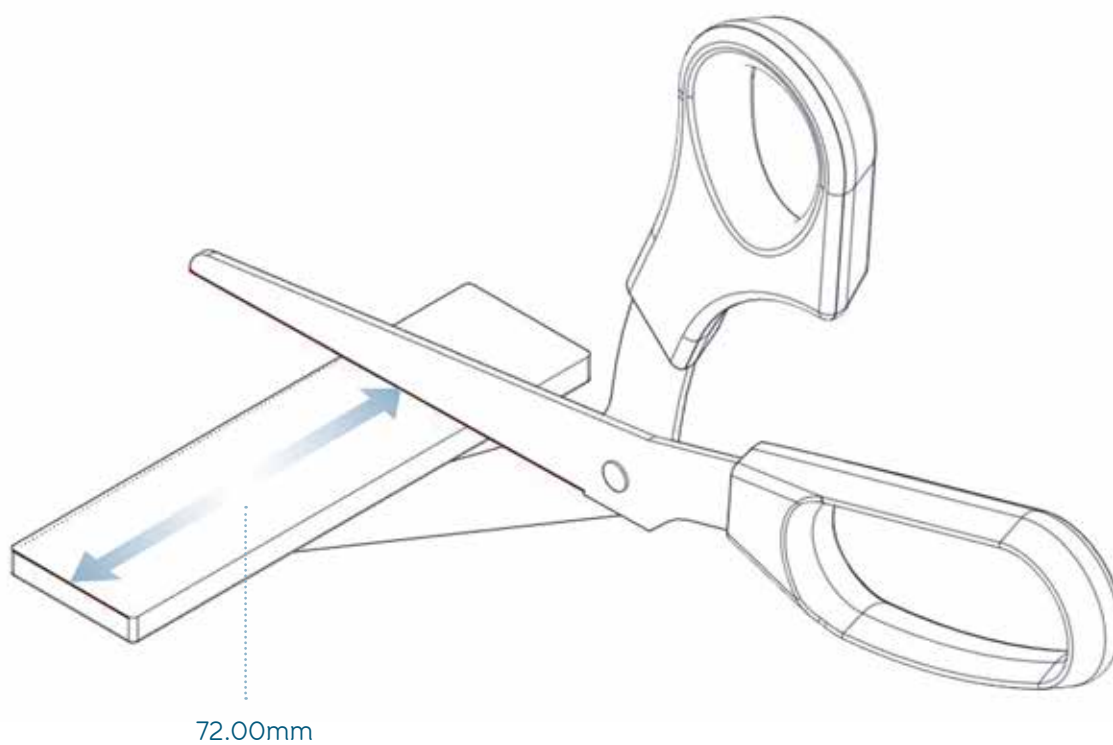
Drill, countersink and fix alignment blocks



Ensure screw is flush with surface of the block

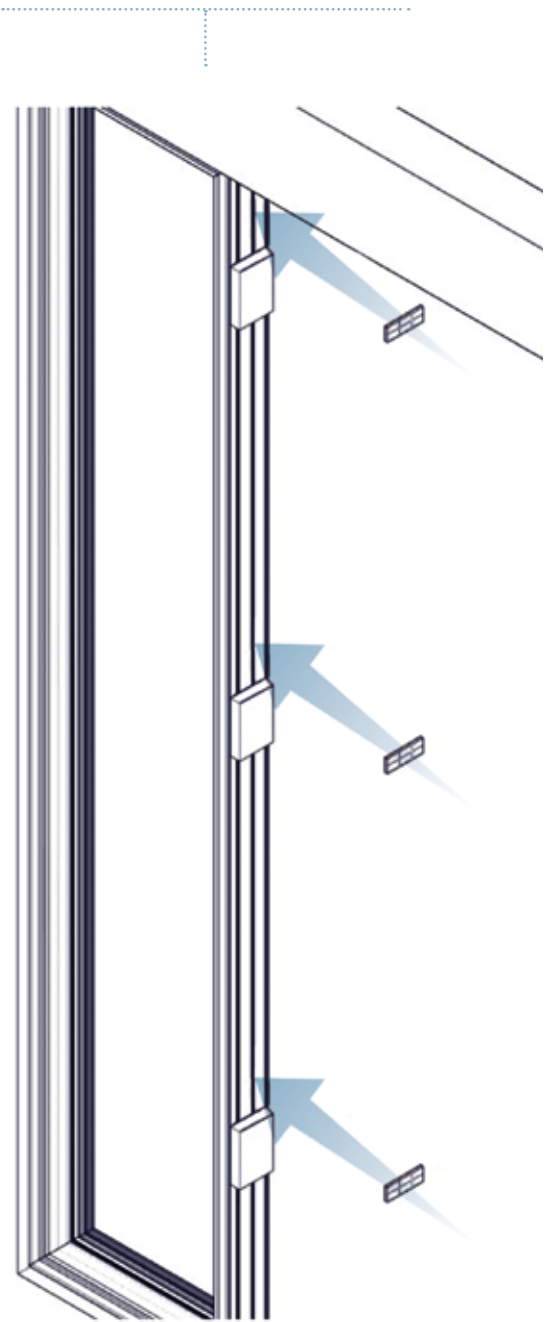


Cut down several 5mm glazing packers to 72mm



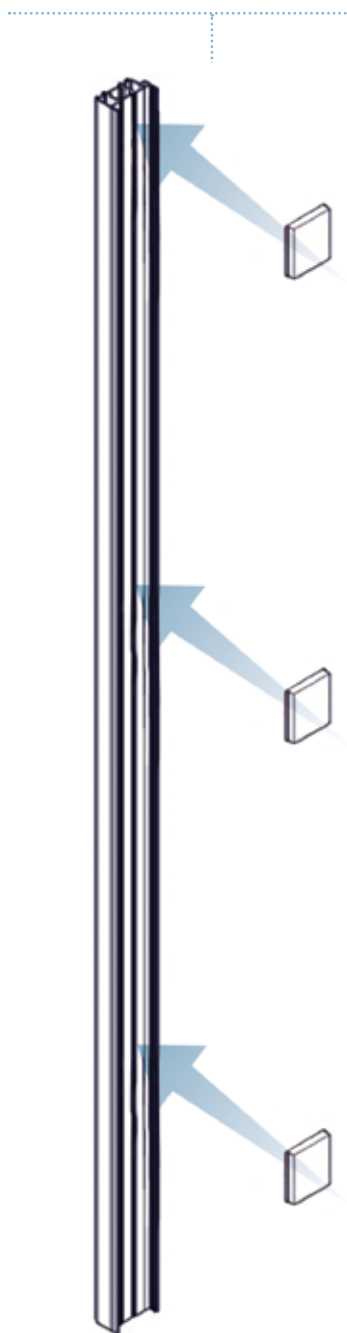
Window to jamb coupler

Install the Glazing Packers

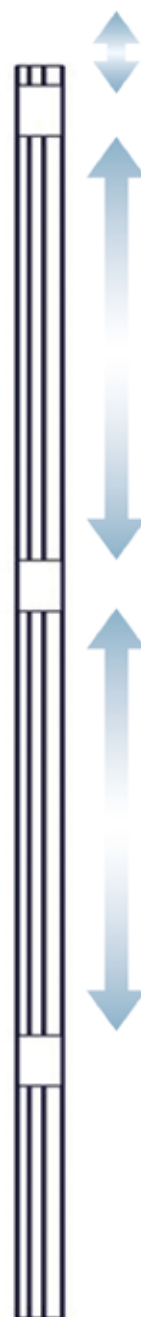


Ensure packers are placed near, or next to, the alignment blocks

Install the jamb packers into the door jamb



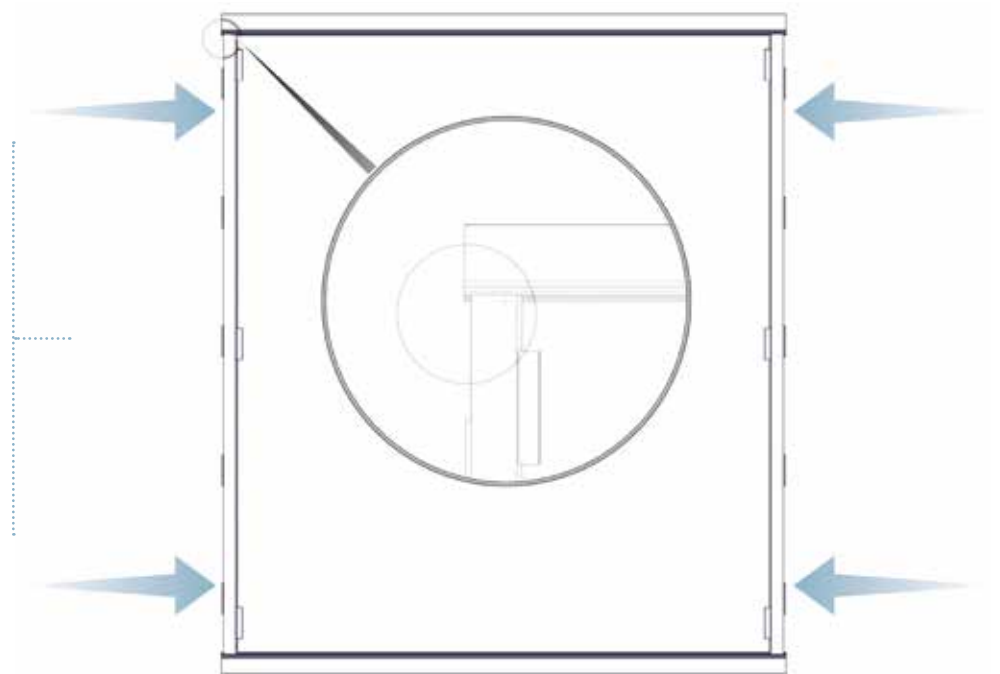
Take into account the track (62mm)



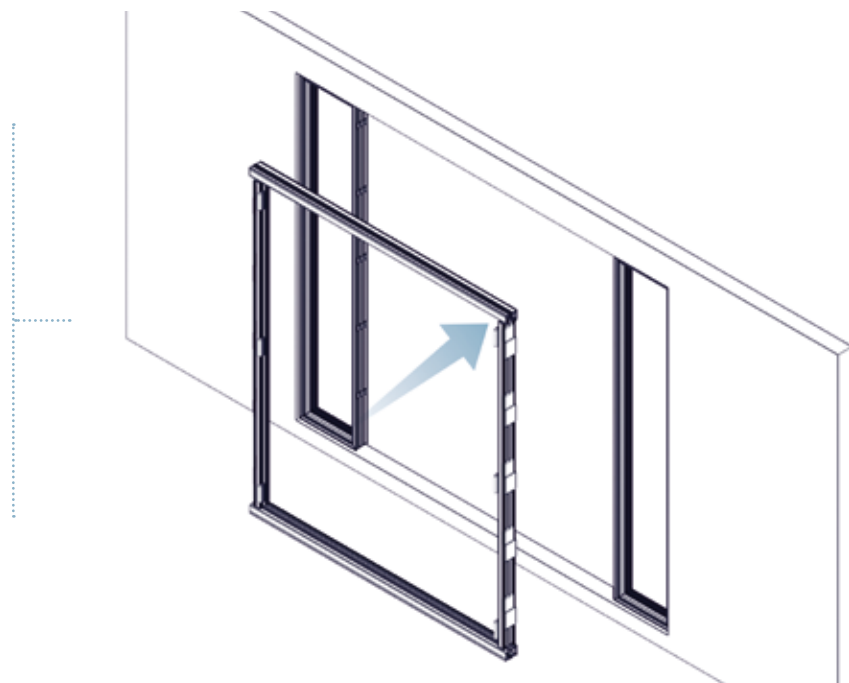
Ensure the jamb packers are installed at the same intervals as the glazing packers installed on the window frame

Window to jamb coupler

Connect the jambs and tracks using the jamb to track connectors



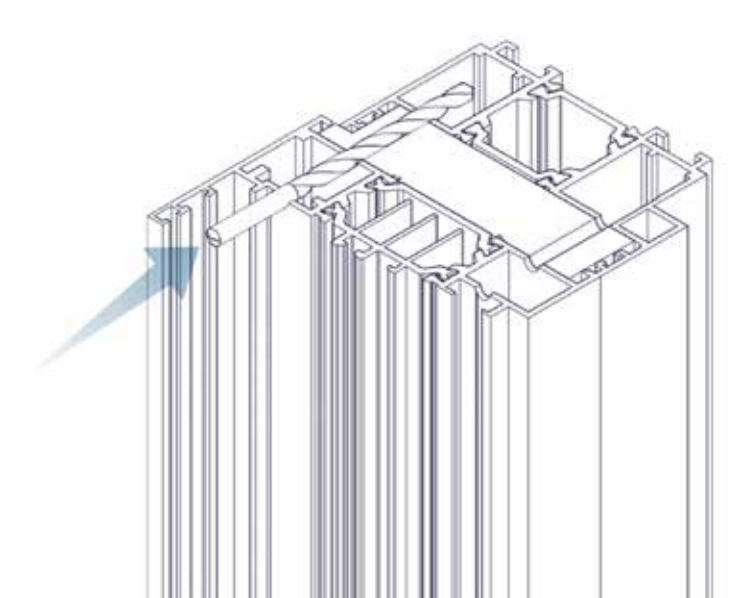
Install the door frame into the aperture and pack/clamp accordingly



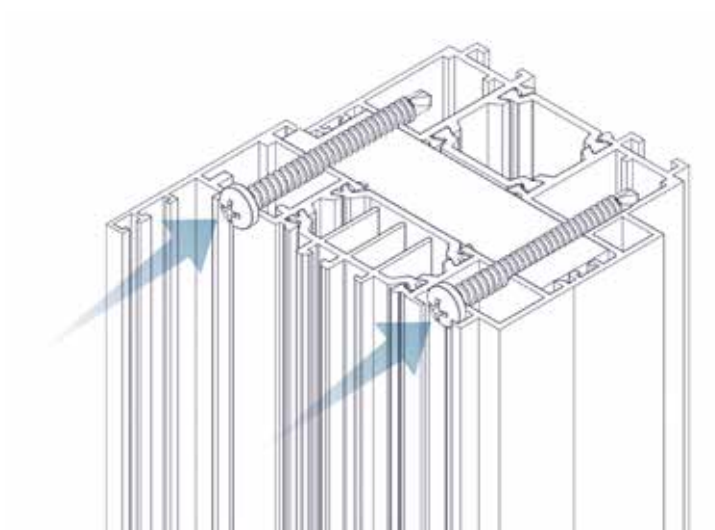


*Do not drill into
gasket chamber*

Pre-drill the frame
with a 3mm drill bit,
as shown, for every
alignment block used

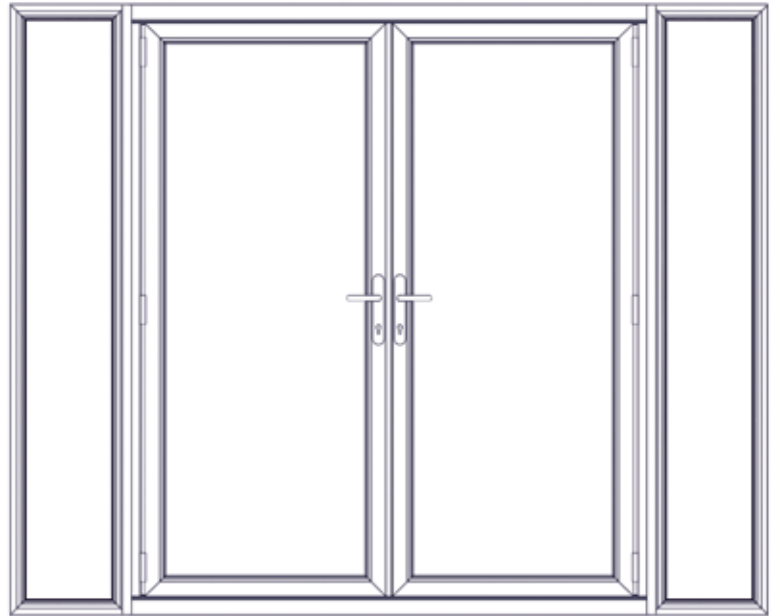


Using the screws
supplied, fix the window
frame to the door jamb



Window to jamb coupler

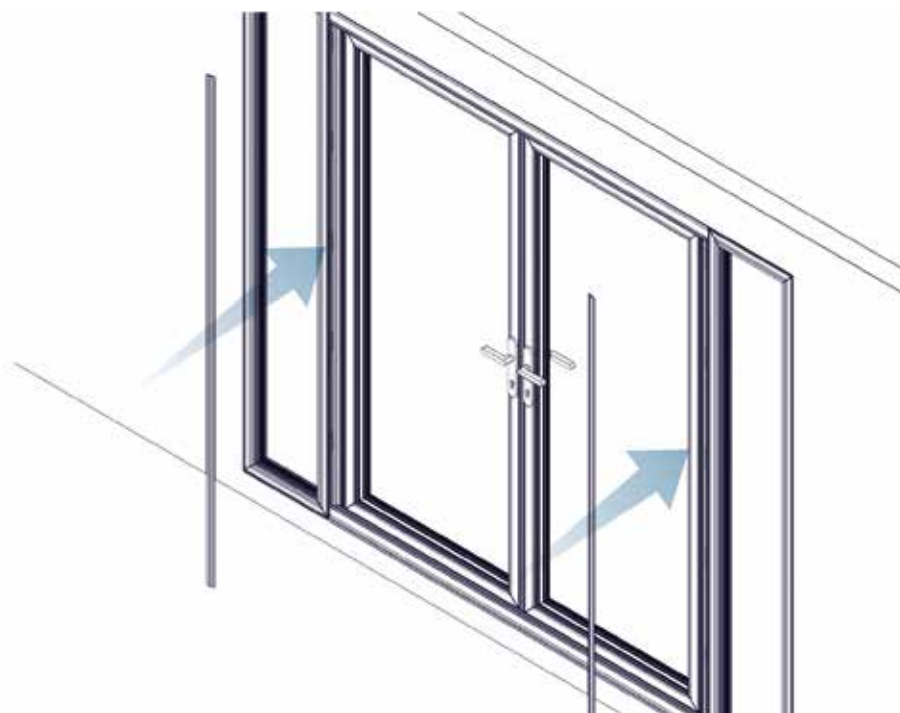
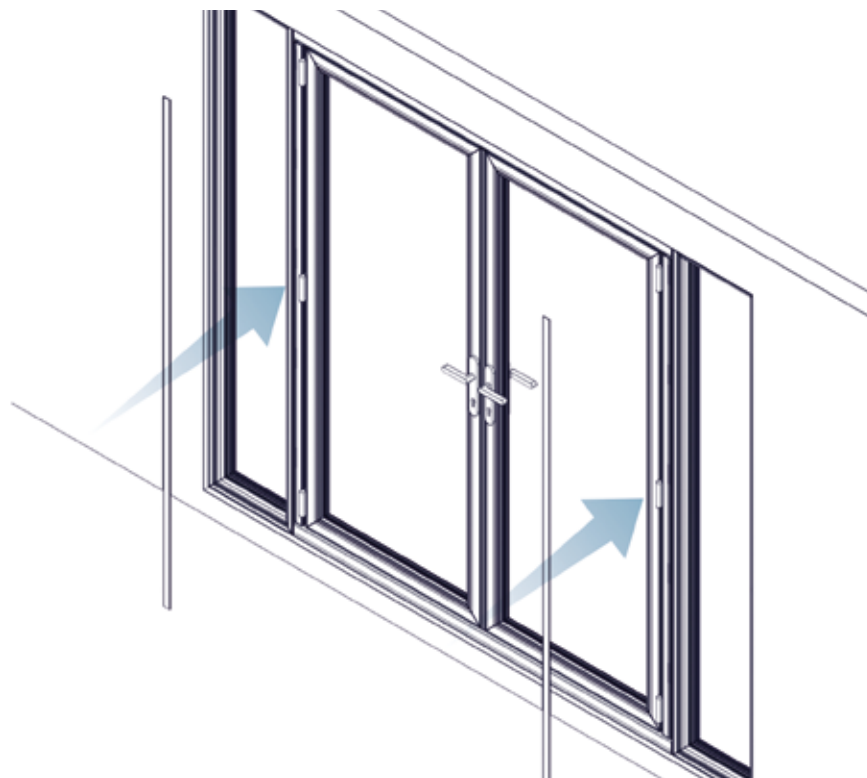
Install door sashes,
windows and glass as
described in the Origin
Installation Guide



Silicone the joint, between
the window and door frame,
making sure the joint is
completely weather proof



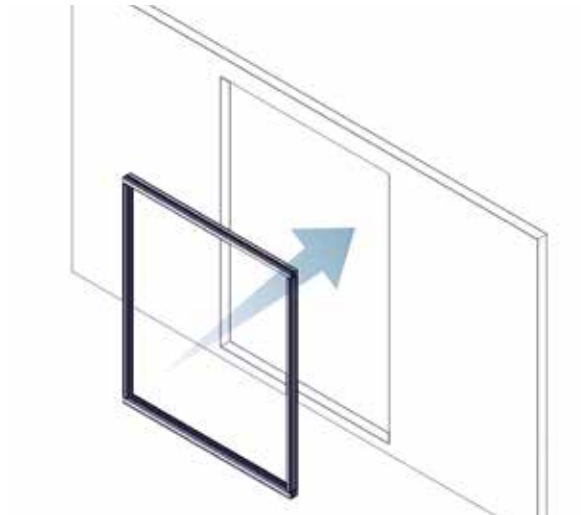
Cut and fit supplied
trim inside (flat) and
out (step)



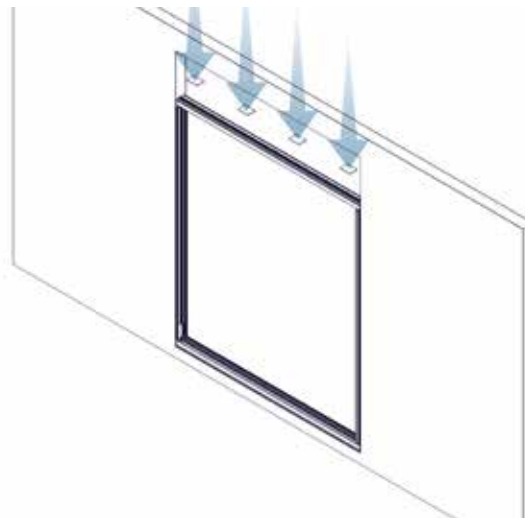
Window to Track Coupler Installation Guide

Window to track coupler

Install door jambs and tracks as described in the Origin Installation Guide

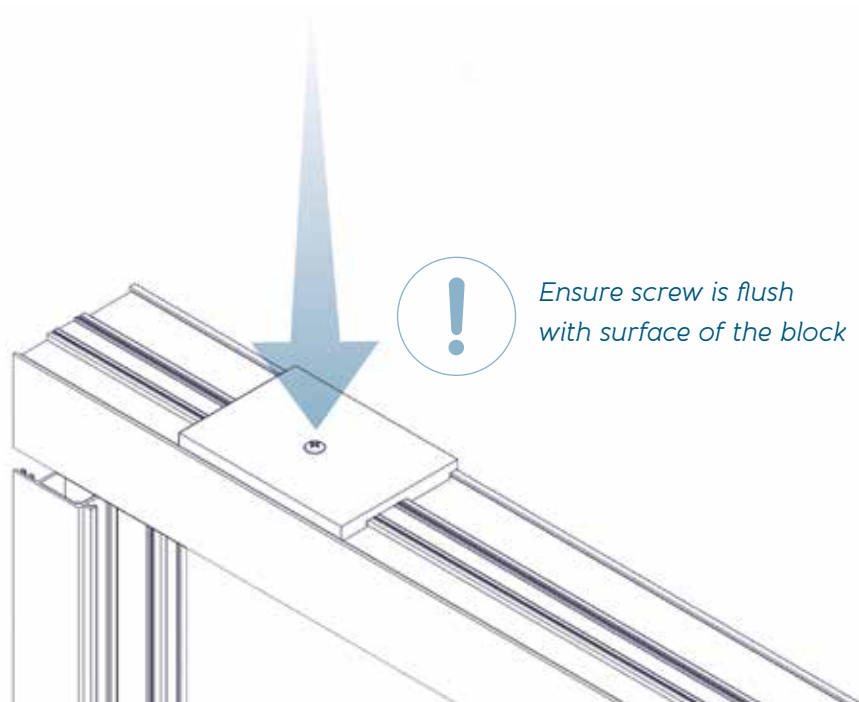
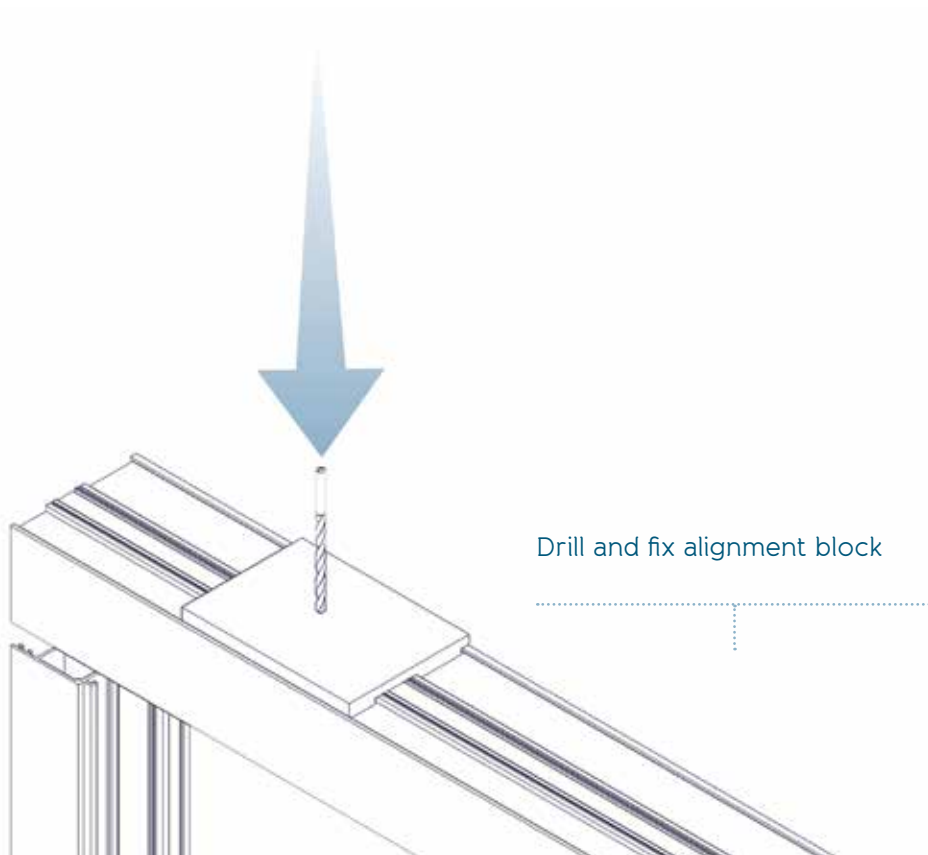


Place fixing blocks along the top track



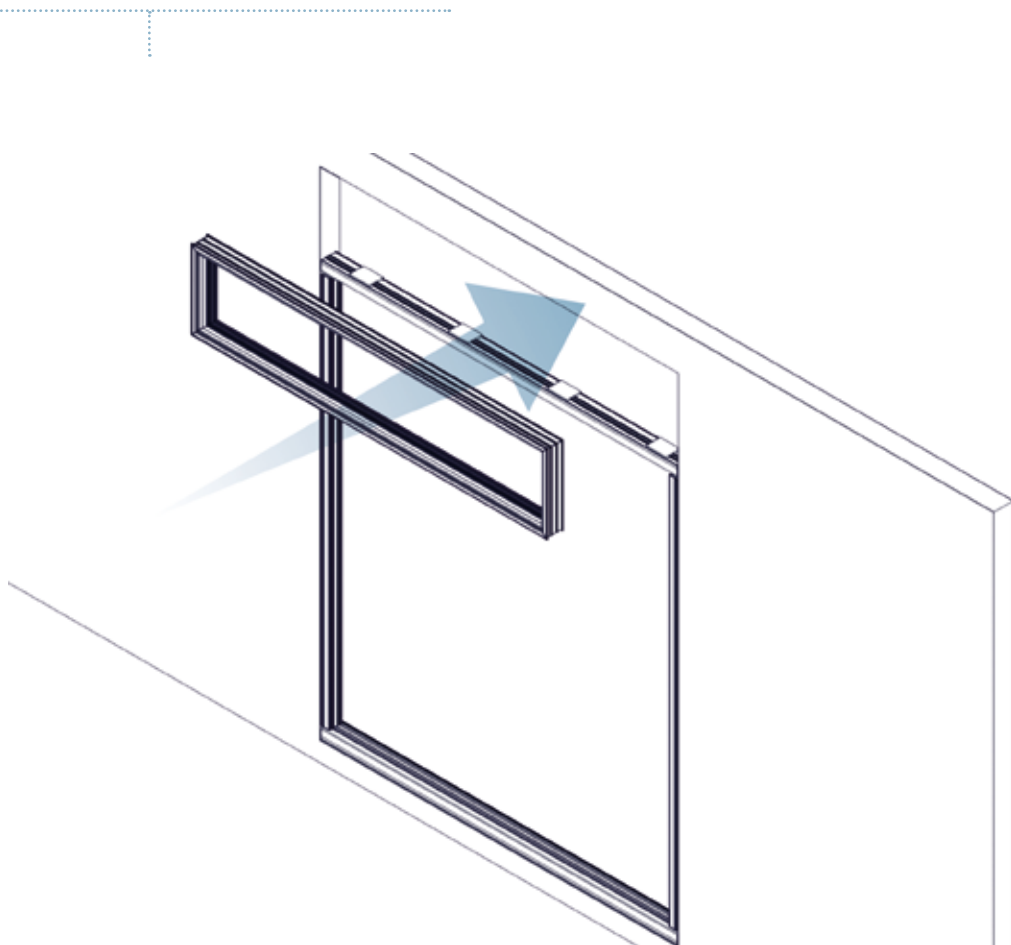
Ensure blocks are spaced evenly as shown



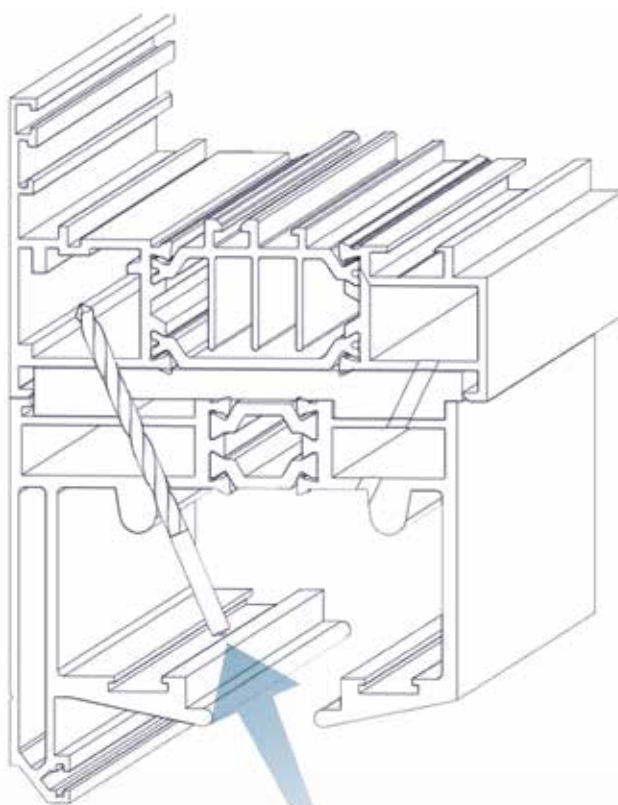


Window to track coupler

Install window above the door using clamps/
windbags to secure into position

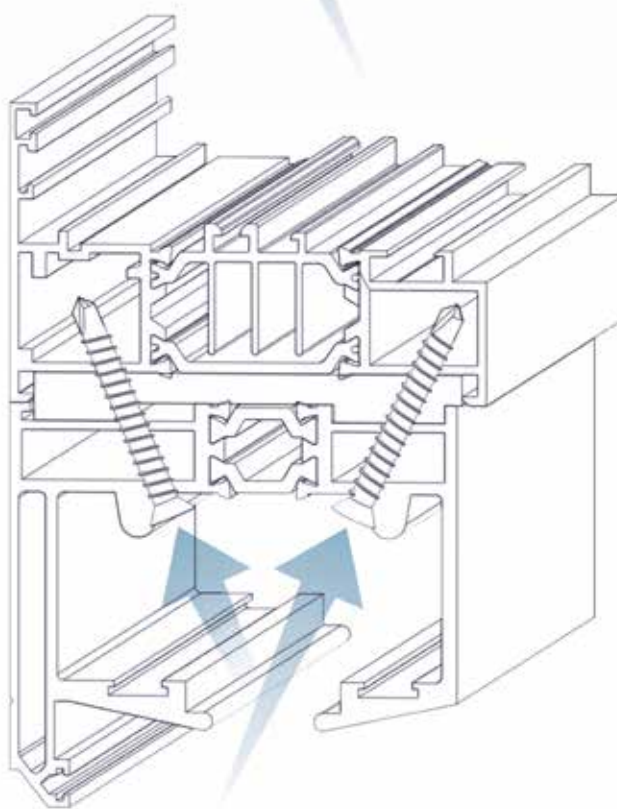


Pre-drill the frame with a 3mm long series drill bit as shown for every alignment block used



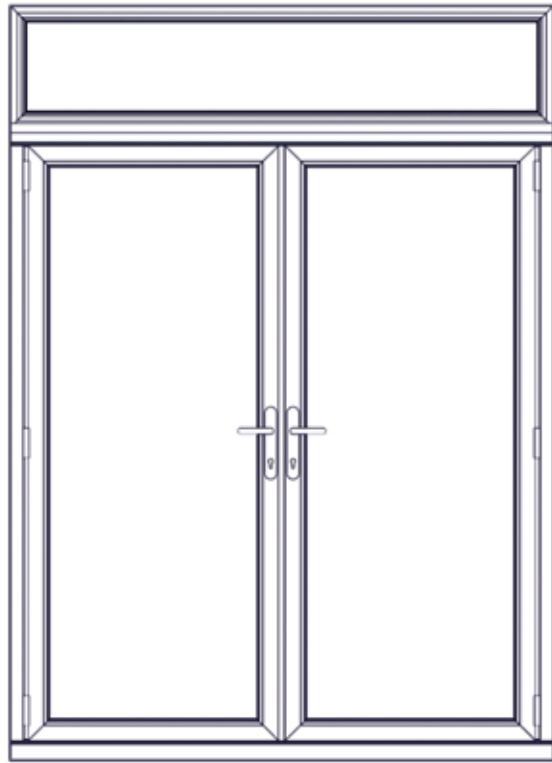
Do not drill into the window cavity

Using screws supplied, fix the track to the window frame



Window to track coupler

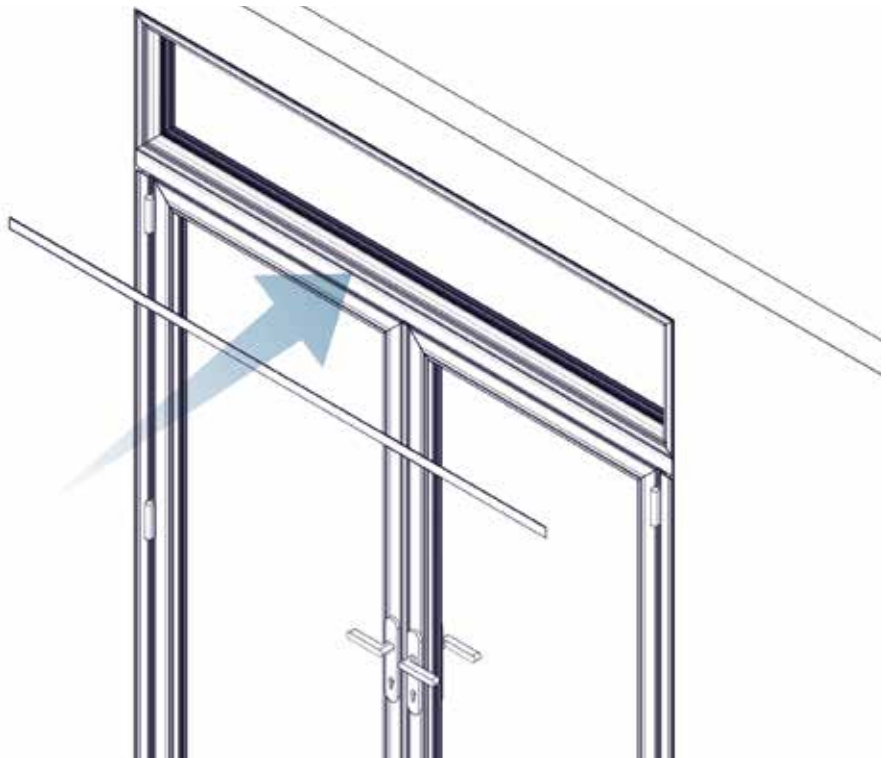
Install door sash,
window and glass as
described in the Origin
Installation Guide



Silicone the joint between
the track and window
frame to ensure the joint is
completely weather proof



Inside



Outside



Cut and fit supplied trim
inside (flat)
and out (step)



Contact

Accounts

t 08448 802 371 or 01494 416895 **e** finance@origin-global.com

Marketing

t 08448 802 374 or 01494 416897 **e** marketing@origin-global.com

Sales

t 0808 168 5816 or 01494 686868 **e** sales@origin-global.com

Technical

t 08448 802 373 or 01494 416896 **e** technical@origin-global.com

Fleet and Logistics

t 08448 802 378 or 01494 416898 **e** logistics@origin-global.com