

FBM018 and FBM018W Fieldbus Input Modules

Application

With 8 digital inputs, the FBM018 und FBM018W Eingabe-Modul Feldbus record the signals from remote devices in DDC3000 and DDC4000/BMR and DDC420 controllers.

Inputs may be potential-free normally open or normally contacts or impulse meters up to 80 Hz. State monitoring via LEDs.

Data is transferred between the controller and the input module over the fieldbus.



Content	Page
Important Information Regarding Product Safety	2
Item	3
Technical Data	3
Accessories (not included in delivery)	3
Dimensions	4
Connection	4
Installation	5
Mounting	6
Mounting the Cascade Plug	6
Mounting Z117 on FBM018	7
Removal	7
Commissioning	8
Function/Operation	9
Setting the Fieldbus Address	9
LED Display for Bus/Error	9

Änderungen vorbehalten - Contents subject to change - Sous réserve de modifications - Reservado el derecho a modificación - Wijzigingen voorbehouden - Con riserva di modifiche - Innehåll som skall ändras - Změny vyhrazeny - Zmiany zastrzeżone - Возможны изменения - A változtatások jogát fenntartjuk - 保留未经通知而改动的权力

Important Information Regarding Product Safety

Safety Instructions

This data sheet contains information on installing and commissioning the product "FBM018, FBM018W". Each person who carries out work on this product must have read and understood this data sheet. If you have any questions that are not resolved by this data sheet, you can obtain further information from the supplier or manufacturer.

If the product is not used in accordance with this data sheet, the protection provided will be impaired.

Applicable regulations must be observed when installing and using the device. Within the EU, these include regulations regarding occupational safety and accident prevention as well as those from the VDE (Association for Electrical, Electronic & Information Technologies). If the device is used in other countries, it is the responsibility of the system installer or operator to comply with local regulations.

Mounting, installation and commissioning work on the devices may only be carried out by qualified technicians. Qualified technicians are persons who are familiar with the described product and who can assess given tasks and recognize possible dangers due to technical training, knowledge and experience as well as knowledge of the appropriate regulations.

Legend



WARNING

Indicates a hazard of medium risk which can result in death or severe bodily injury if it is not avoided.



CAUTION

Indicates a hazard of low risk which can result in minor or medium bodily injury if it is not avoided.



NOTICE

Indicates a hazard of medium risk which can result in material damage or malfunctions if it is not avoided.



NOTE

Indicates additional information that can simplify the work with the product for you.

Notes on Disposal

For disposal, the product is considered waste from electrical and electronic equipment (electronic waste) and must not be disposed of as household waste. Special treatment for specific components may be legally binding or ecologically sensible. The local and currently applicable legislation must be observed.

Product Description**FBM018, FBM018W****Item**

FBM018	Fieldbus input module with 8 digital inputs Inputs may be potential-free normally open or normally contacts or 80 Hz impulse meters.
FBM018W	Like FBM018, but with Z175

Technical Data

Nominal voltage	DC 12 V \pm 20%/90 mA; 1.08 VA
Inputs	8 contact inputs K1–K8 (potential-free), max. 80 Hz
Interface	CAN; fieldbus max. 2000 m; 20 kBd
Address switch	Addressing 01–63 by means of 2 rotary switches
Display	8 LEDs for displaying inputs K1–K8, LED lights up when on 2 LEDs - LED BUS green: flashing = data is being transferred over the fieldbus. - LED Error red: Fieldbus error
Overvoltage category	III
Rated impulse voltage	800 V
Level of contamination	2
How It Works	Type 1
Degree of protection	IP20 (IP65 when installed in Z175 wall-mounted enclosure)
Housing	Plastic housing, 4 HP
Ambient temperature	0–45 °C
Ambient humidity	20–80% r.h., non-condensing
Mounting	On standard TH 35- 7.5 rails for installation in the control panel or the wall-mounted enclosure.
Weight	FBM018 0.13 kg; FBM018W 0.8 kg

Accessories (not included in delivery)

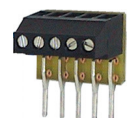
- Z179 Cascade plug
Multiple FBM0xx modules can be connected using the cascade plug. In this manner, the modules are supplied even when there are inactive modules within the chain.
Connected fieldbus lines: DC 12 V, DC 0 V, CAN bus (+, -)
A maximum of 5 modules can be connected in cascade.



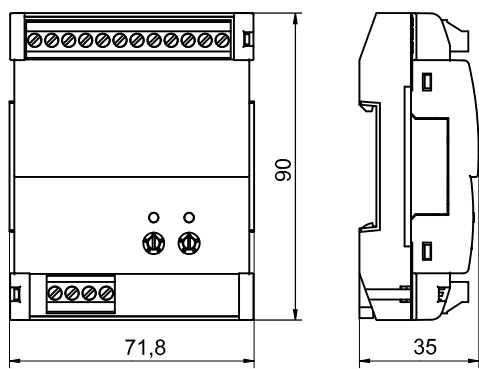
- Z175 Empty housing for wall mounting (4 HP/IP65)
WxHxD mm 174x94x69
Included in delivery with FBM018W



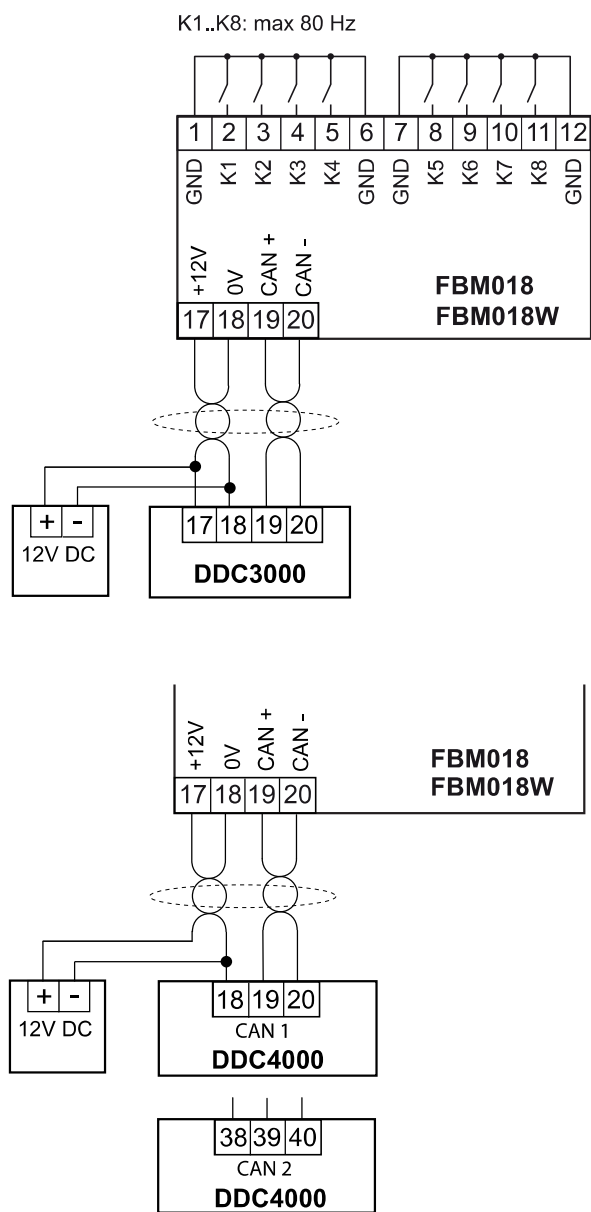
- Z117 SO interface adapter
for connection of max. 4 pulse meters with S0 interface



Dimensions

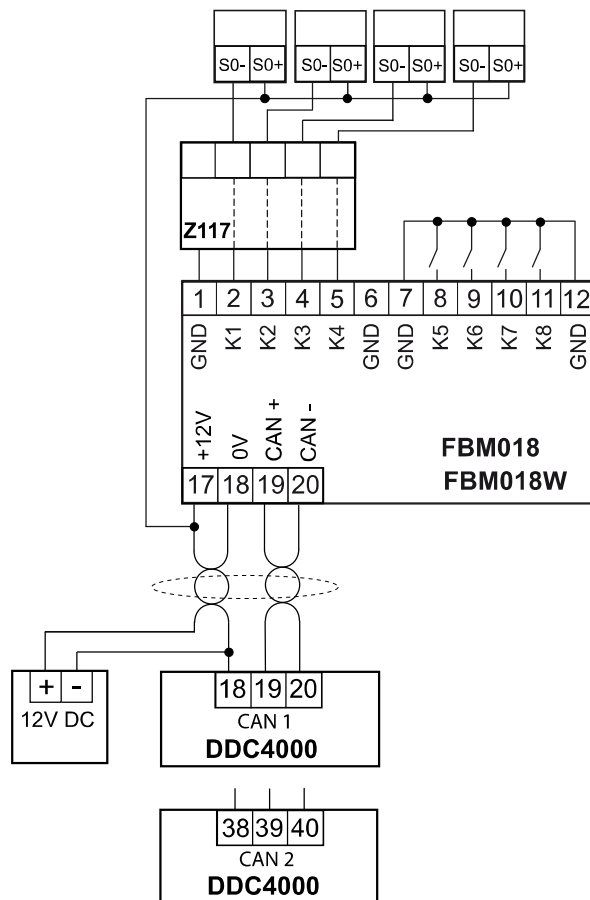


Connection



Z117 connection

- Connecting Z117 to FBM018 with 4 impulse meters

**Installation****NOTICE**

This product description describes specific settings and functions of the FBM018x. In addition to these instructions, observe the product descriptions of other system components, such as DDC controller DDC4000, BMR or DDC420.

**NOTICE**

Switching on the power supply of unparameterized products can lead to unforeseen consequences such as malfunctions or material damage.

Switch on the power only after the device has been configured by the commissioning technician.

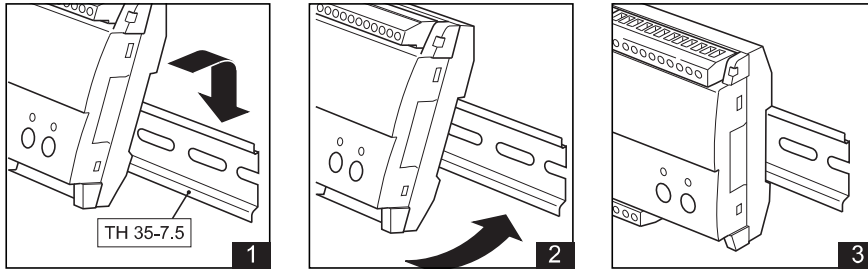
Fieldbus

When connecting the fieldbus, use a cable of at least type JY(St)Y 2x2x0.8 Lg: two x two wires, twisted to a pair with plastic insulation and an electrostatic shield with a wire diameter of at least 0.8 mm. Use a stranded pair of wires for the data lines (+ and -) and another free wire for the ground connection (0).

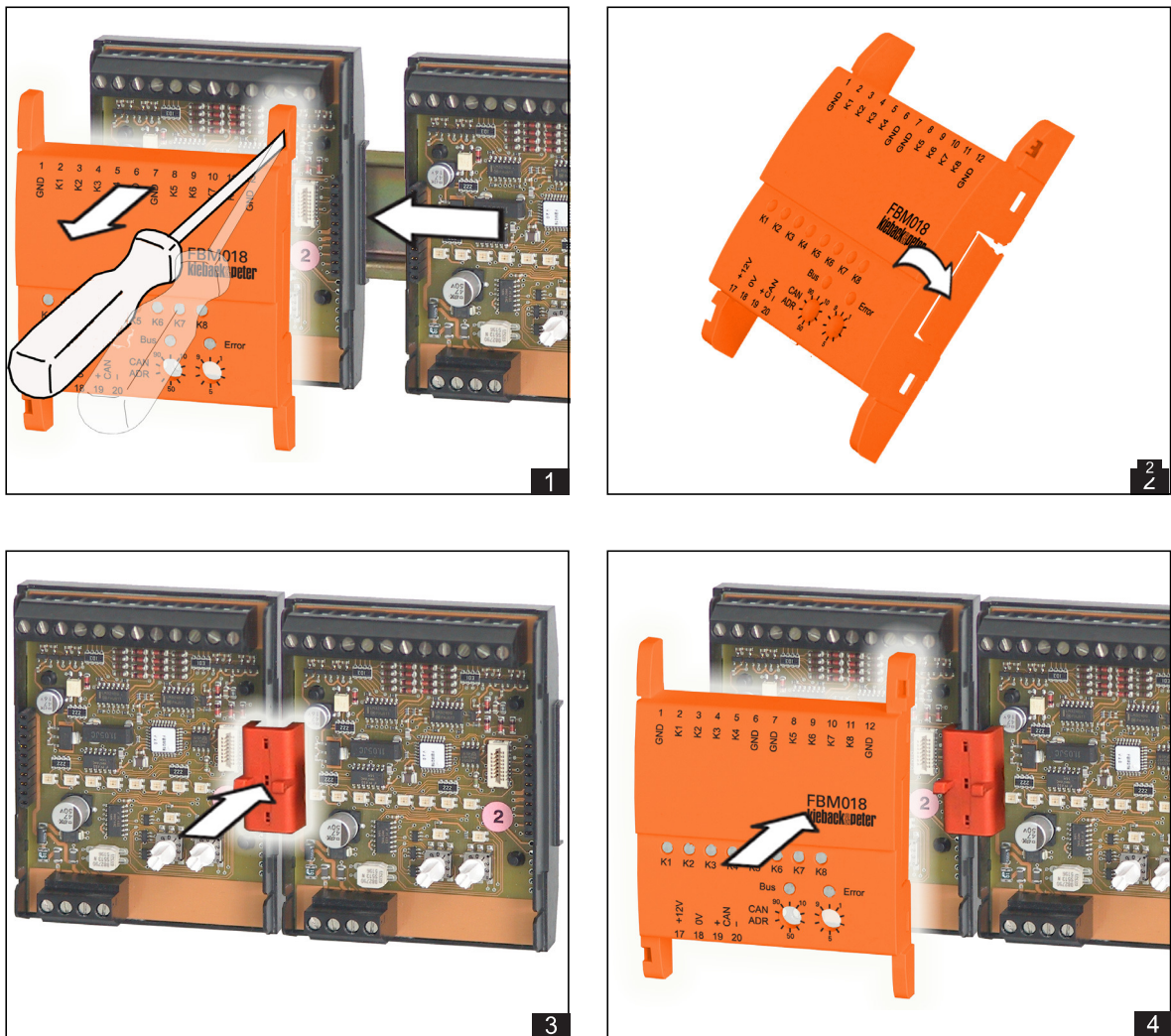
At the end of the fieldbus (furthest point from the DDC controller), install a terminating resistor of about 180 ohms between both data lines (+ and -). The terminating resistor is included with the DDC controller.

The maximum cable length for the Fieldbus is 2000 m.

Mounting



Mounting the Cascade Plug



- Remove the covers of the devices that are to be cascaded by releasing the catches using the two slots that are provided and lifting off the covers.
- Snap the device base onto the standard rail and slide the units together.
- Break out the perforated areas for the insertion of the cascade plug.
- Connect the cascade plug.
- Replace the device hoods.

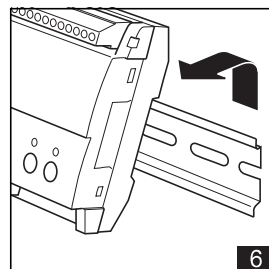
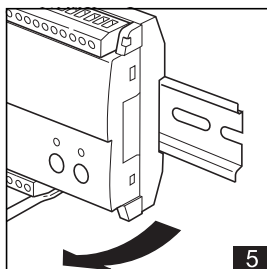
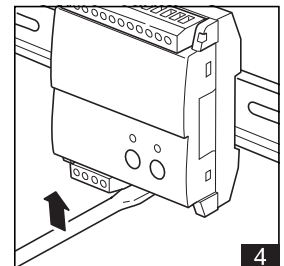
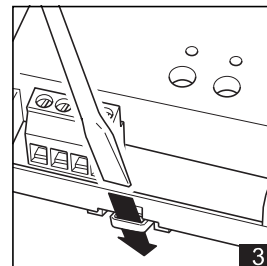
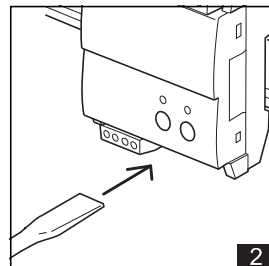
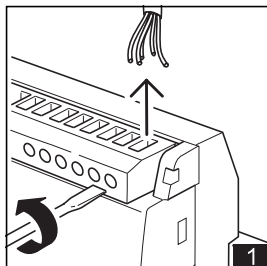
Mounting Z117 on FBM018



Removal

**WARNING**

Contact with live parts of electrical domestic installation can cause death due to electric shock. Mounting/removal may only be carried out when power is switched off.



Commissioning



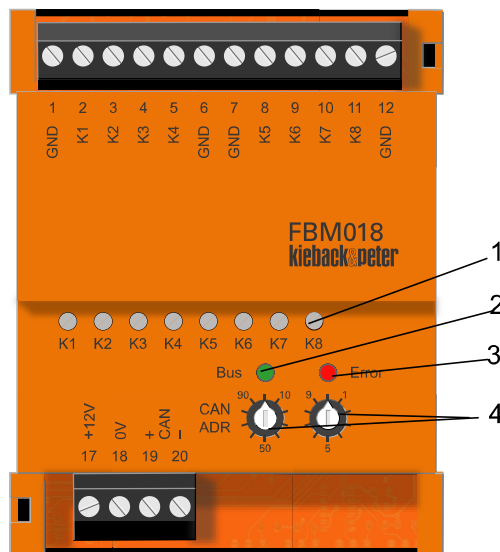
NOTICE

Commissioning by switching on the supply voltage may occur only after the commissioning technician/engineer has finished configuring the DDC and has set the fieldbus address.

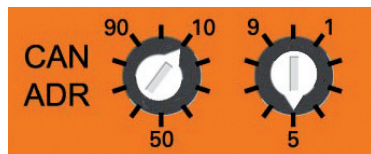
-
- Configuration is described in the DDC controller project planning documentation.
 - Before switching on the supply voltage, check the electric installation and the device connections.
 - After configuring the device and switching on the supply voltage, check the functions of the module and the connected inputs and outputs.

Product Description**FBM018, FBM018W****Function/Operation**

Operating and display elements under the transparent cover (transparent cover not shown in the figure)



- (1) Display of inputs K1–K8
- (2) LED green
- (3) LED red
- (4) Address switch – address setting 01 to 63

Setting the Fieldbus Address

Example: 15

LED Display for Bus/Error

Green LED (1)	Red LED (2)	Meaning	Cause
Off	Off	Module not in operation	■ No operating voltage or operating voltage too low
On	On	Module in operation, but there is a bus error	<ul style="list-style-type: none"> ■ Bus line short circuit (with respect to ground or each other) ■ Bus lines mixed up ■ Bus line(s) interrupted ■ Module not registered
Flickers	Flashes	Address error	<ul style="list-style-type: none"> ■ Outside of address range (01–63) ■ Address assigned multiple times
Flickers	On	Module logging on	
Flickers	Off	Module OK, bus activity	

FBM018, FBM018W

Product Description