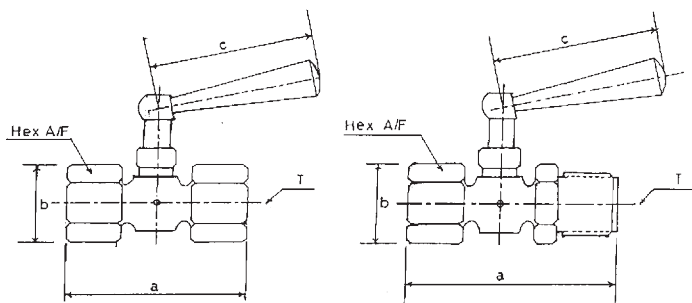
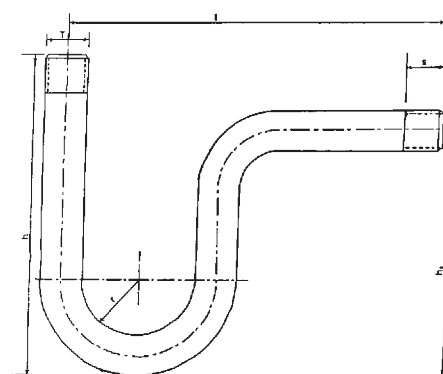


Gauge Cock & Syphon



FEMALE / FEMALE (F/F)

FEMALE / MALE (F/M)



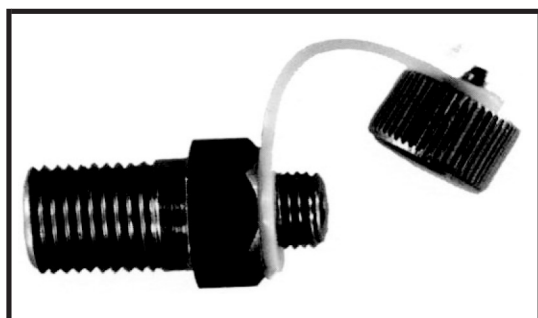
DESIGN	SIZE T	DIMENSIONS (inches)			
		a	b	c	HEX A/F
F / F	1/4"	1.73	0.70	1.46	0.63
F / M	1/4"	2.01	0.70	1.46	0.63
F / F	3/8"	2.16	0.87	1.46	0.75
F / M	3/8"	2.56	0.87	1.46	0.75
F / F	1/2"	2.36	1.06	2.13	0.92
F / M	1/2"	2.76	1.06	2.13	0.92

MATERIALS

Item	Description
Gauge Cock	
Body	Brass
Handle	Plastic
U Syphon	
Body	MS Pipe

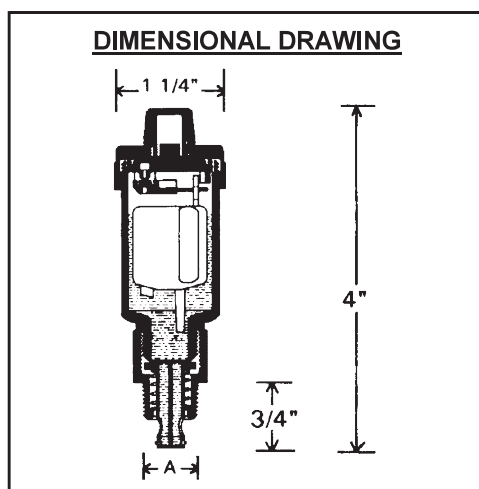
SIZE T	DIMENSIONS (mm)				
	h	h1	l	r	s
1/4"	155	130	160	26	14
3/8"	155	130	160	26	18
1/2"	170	130	200	29	20

Test Plug



MODEL NUMBER	CONNECTION SIZE	
	TEST SIDE	PROCESS SIDE
VTPT - 02	3/8" UNF	1/4" *
VTPT - 512	3/8" UNF	1/2" *
PLEASE SPECIFY PROCESS CONNECTION THREADING STANDARD (NPT / BSP), AND APPLICATION		

- * INSTANT ACCESS TO TEST TEMPERATURE AND / OR PRESSURE.
 - * INJECT OR TAKE SAMPLES OF GAS OR LIQUID FROM PIPE OR VESSEL WHILE UNDER PRESSURE.
 - * REDUCE NEED FOR COSTLY, PERMANENTLY INSTALLED GAUGES.
 - * CONDUCT TESTS AT SPECIFIC KEY LOCATIONS.
-
- * BODY CONSTRUCTION : BRASS
 - * CORE CONSTRUCTION : NEOPRENE (FOR WATER AND AIR)
EPDM (FOR STEAM AND HIGH TEMPERATURE FLUID)
NITRILE RUBBER (FOR OIL)
 - * MAXIMUM OPERATING PRESSURE : 500 PSI (WATER)
250 PSI (STEAM)
 - * TEMPERATURE RANGE : -30°F TO 250°F
 - * APPLICATION : WATER, AIR, OIL AND STEAM
 - * INSTALLATION : USE FACTORY SUPPLIED WELDABLE STEEL SOCKET (ACCESSORY) FOR INSTALLATION OF TEST PLUGS.



<u>MODEL #</u>	<u>THREAD CONNECTION (A)</u>
VAV - 538	3/8"
VAV - 512	1/2"
VAV - 7	3/4"
VAV - 10	1"

*** APPLICATION:**

VAV AUTOMATIC AIRVENTS ARE DESIGNED FOR MAXIMUM OPERATING PRESSURE OF 10 BAR AND MAXIMUM TEMPERATURE OF 120°C. WHENEVER AIR POCKETS ARE LIKELY TO OCCUR IN OPEN OR CLOSED LIQUID FLOWING SYSTEM, INSTALLATION OF **VAV** AUTOMATIC AIRVENTS IS RECOMMENDED FOR CONTINUOUS VENTING OF AIR.

*** OPERATION:**

WHEN AIR ACCUMULATES IN THE AIRVENTS, THEN THE FLOAT DESCENDS WITHIN THE BODY AND ALLOWS AIR TO ESCAPE. WHEN THE AIR HAS ESCAPED LIQUID WILL ENTER THE AIRVENT RAISING THE FLOAT WHICH SHUTS OFF AIR RELEASE VALVE. THE DESIGN OF THE AIR RELEASE VALVE, MOUNTED ON TOP OF THE AIRVENT, MAKES LEAKAGE OF THE LIQUID ABSOLUTELY IMPOSSIBLE.

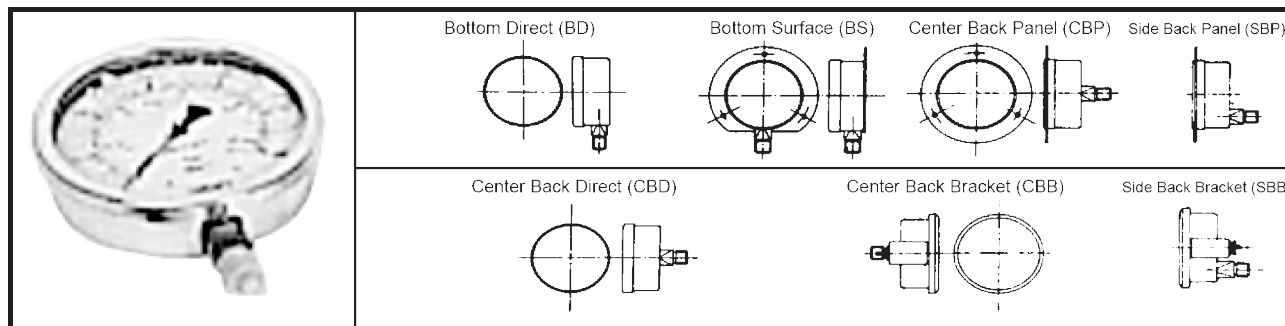
*** CONSTRUCTION:**

THE BODY IS MADE OF BRASS WITH 3/8", 1/2", 3/4", 1" THREADED CONNECTIONS OF SHUT-OFF VALVE. OTHER PARTS ARE MADE OF PLASTIC AND CORROSION RESISTANT STEEL AS APPROPRIATE TO THEIR FUNCTION.

*** INSTALLATION AND MAINTENANCE:**

INSTALL IN VERTICAL POSITION ONLY. BEFORE FILLING THE SYSTEM, OPEN THE CAP BY ONE OR TWO TURNS. TO CLEAN THE INTERIOR WITHOUT DRAINING THE INSTALLATION, FOLLOWING STEPS SHOULD BE FOLLOWED:

1. UNSCREW THE BODY FROM THE SHUT-OFF VALVE.
2. UNSCREW THE TOP METALLIC CAP & REMOVE O-RING.
3. REMOVE THE PLASTIC COVER WITH A POINTED OBJECT ALONG WITH MECHANISM AND FLOAT.
4. REMOVE FLOAT & SEAT ASSEMBLY FROM TOP PLASTIC COVER.
5. REMOVE & CLEAN FLOAT VALVE AND SEAT.
6. RE-INSTALL ALL THE ITEMS FOLLOWING REVERSE PROCESS EXPLAINED ABOVE.



* SPECIFICATIONS:

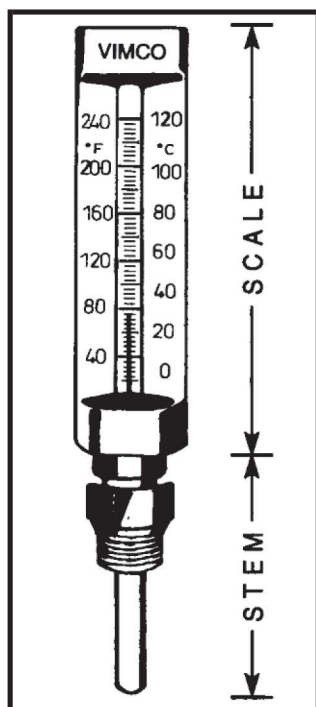
SIZE	: 55MM, 68MM, 80MM, 100MM, 150MM	
CASE	: DRAWN STEEL STOVED ENAMELED BLACK	
BEZEL	: DRAWN STEEL STOVED ENAMELED BLACK / CHROME PLATED	
SENSING ELEMENT	: BOURDON 'C' SHAPED TUBE FOR RANGES UP TO 100KG/CM ²	
	COIL SHAPED TUBE FOR HIGHER RANGES.	
ELEMENT MATERIAL	: BRASS / COPPER ALLOY	
SOCKET	: SECTIONAL BRASS	
MOVEMENT	: BRASS	
DIAL	: TIN / ALUMINUM	
	(WITH BLACK AND RED MARKINGS ON WHITE BACKGROUND)	
POINTER	: STEEL / ALUMINUM	
	(BLACK FOR MEASUREMENT, RED FOR SETTING)	
WINDOW	: CLEAR, PLAIN GLASS	
JOINT	: HARD SOLDERED / BRAZED	
TEMP. RATING	: 120°C	
ACCURACY	: ±2% OF F.S.D.	
OVER RANGE PROTECTI	: UP TO 160/KG/CM ²	25% OF FULL SCALE
	ABOVE 160 KG/CM ² AND UP TO 600 KG/CM ²	15% OF FULL SCALE
	ABOVE 600 KG/CM ²	10% OF FULL SCALE
PROCESS CONNECTION:	1/4", 3/8", 1/2" BSP(M) / NPT(M)	
RANGE	: 0-30 PSI, 0-60 PSI, 0-100 PSI, 0-150 PSI, 0-200 PSI, 0-300 PSI	
	IN SINGLE / DUAL / TRIPLE SCALE.	
	COMBINATIONS OF PSI, BAR, KG/CM ² OR OTHERS	

* OPTIONAL FEATURES:

SIZE	: 200MM, 250MM, 300MM
CASE	: DRAWN STEEL POWDER COATED, STAINLESS STEEL, BRASS, CHROME PLATED BRASS
THREAD CONNECTION	: 1/8" AND 1/4" NPT AND M12 X 1.5 THREADS IN 55M AND 68MM SIZES
	1/4" AND 1/2" NPT AND M20 X 1.5 THREADS IN OTHER SIZES
ACCURACY	: ±1% OF F.S.D.
ACCESSORIES	: BUILT-IN DAMPENER, EXTERNAL ADJUSTABLE DAMPENER, GLYCERINE-FILLED, 'U' / PIGTAIL SYPHON, GAUGE COCK
SPECIAL SIZES, CONNECTIONS, RANGES, MATERIAL OF CONSTRUCTION AVAILABLE	
SUBJECT TO MOQ & EXTENDED LEAD TIMES.	

* SPECIAL APPLICATION GAUGES:

OXYGEN GAUGE, ACETYLENE GAUGE, AMMONIA GAUGE AND FREON GAUGE ON REQUEST



* SPECIFICATIONS:

TYPE	: STRAIGHT / ANGLE 130° AND 90°
SCALE SIZE ('V' shape)	: 5" (110MM), 6" (150MM), 8" (200MM) AND 9" (225MM)
STEM SIZE	: 1 1/2" (40MM), 2 1/2" (63MM), 4" (100MM), 6" (150MM)
STEM DIA.	: 0.4" (10MM)
PROCESS CONNECTION	: 3/8", 1/2" B.S.P. (MALE / FEMALE)
SCALE	: SINGLE (°C) / DUAL (°C & °F)
PRINTING	: SCREEN PRINTED (°C IN BLACK & °F IN RED COLOR)
GLASS TUBE	: PRISMATIC / ROUND GLASS TUBE FILLED WITH BLUE OR RED ALCOHOL
GRADUATION	: ENGRAVED IN BLACK
BODY MATERIAL	: DIE CAST ALUMINUM WITH BRASS FINISH / UN-BREAKABLE MOLDED 'ABS', WITH BRASS FINISH
STEM MATERIAL	: BRASS, S.S. 304/316
RANGE	: 0-50°C, 0-100°C, IN SINGLE/DUAL SCALE OTHER RANGES ON REQUEST

* SPECIAL FEATURES:

A SOLID GLASS TUBE THERMOMETER WITH DEEPLY ENGRAVED GRADUATIONS IS FITTED IN TO THE GROOVE OF CASING AND EMBEDDED IN BETWEEN ITS 2 INCLINING SIDE PIECES. ONE SIDE IS PROVIDED WITH BLACK SCREEN PRINTED °C RANGE FIGURES AND THE OTHER SIDE WITH °F RANGE FIGURES. THE THERMOMETER IS THOROUGHLY PROTECTED AGAINST EXTERNAL DAMAGES.

THE PRISMATIC CAPILLARY ENABLES A CLEAR READING EVEN FROM A DISTANCE.

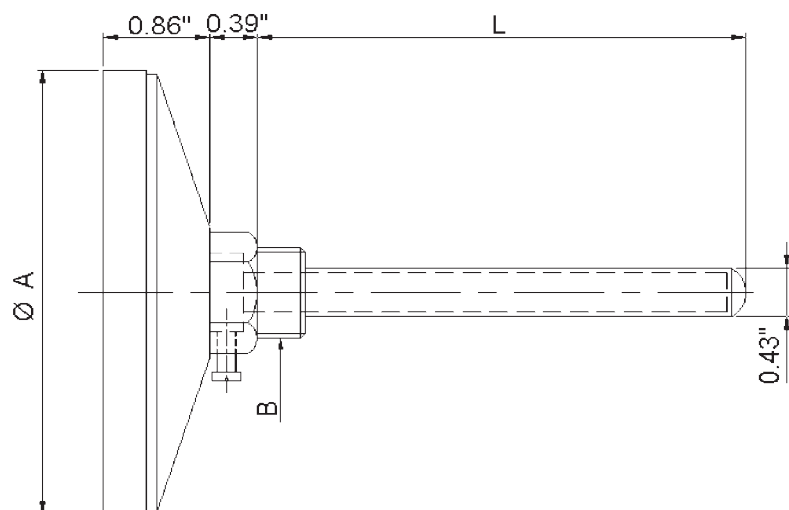
THE SOLID AND FINISHED CASING IS MADE FROM ALUMINUM OR 'ABS' PLASTIC AND BRASS FINISHED WITH ACID RESISTIVE PAINT. THE GLASS THERMOMETER IS RESTING ON A RUBBER WASHER AND IS THEREFORE FREE FROM VIBRATIONS.

THE CHECK-NUT BETWEEN CASING AND STEM ENABLES THE INSTRUMENT TO BE TURNED TO ANY DIRECTION.

* OPTIONAL FEATURES: (SUBJECT TO MOQ / EXTENDED LEAD TIMES)

MERCURY FILLED GLASS CAPILLARY FOR HIGHER TEMPERATURES (UP TO 300°C),
SPECIAL SIZES (SCALE / STEM / CONNECTION), TEMPERATURE RANGES, MATERIAL OF CONSTRUCTION

Bi-Metal Temperature Gauge



* All dimensions are in inches unless otherwise indicated

DIMENSIONS

Nominal Size (Ø A)	2 1/2", 3", 4"
Immersion Length (L)	2 1/2", 3", 4", 6"
Process Connection (B)	1/2" male (NPT / BSP)

How to Order:

VBMTG-(-40/120)-40-60	
Gauge type	Immersion Length
Range in °F	25 - 2 1/2"
Nominal Size	30 - 3"
25 - 2 1/2"	40 - 4"
30 - 3"	60 - 6"

* Specify mounting style + optional construction (if required) when ordering.

SPECIFICATION

Mounting	Center Back Connection Direct Mounting		
	Bottom Connection Direct Mounting		
Pointer	Micrometer Zero Adjustment Pointer		
Accuracy	1% of F.S.D.		
Range	-20°F (-30°C)	to	120°F (50°C)
	-20°F (-30°C)	to	160°F (70°C)
	30°F (0°C)	to	130°F (55°C)
	30°F (0°C)	to	200°F (100°C)
	30°F (0°C)	to	240°F (120°C)
	30°F (0°C)	to	300°F (150°C)
	30°F (0°C)	to	400°F (200°C)
	30°F (0°C)	to	480°F (250°C)

MATERIAL OF CONSTRUCTION

Sensing Element	Bi-Metal Helical Coil
Case	Stainless Steel
	Brass Chrome-Plated / Brass Stove Enameled Black Coated
Bezel	Stainless Steel
	Brass Chrome-Plated / Brass Stove Enameled Black Coated
Window	Acrylic
	Shatter Proof Glass
Stem	Brass (Natural Finish)
	Brass Chrome-Plated
Pocket	Brass (Natural Finish)
	Brass Chrome-Plated / Stainless Steel 304 / 316

NOTES:

1. Data in bold is standard construction. Contact factory for other options.