

# Double Deflection, Rubber-in-shear Mounts

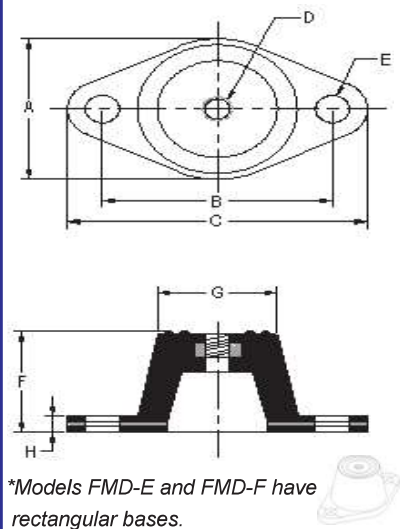


## Features + Application Information

1. Anti-skid top and bottom surfaces
2. Mounting holes furnished as standard
3. Embedded steel plates for uniform loading
4. Ozone + water resistant elastomer
5. High deflection, low natural frequency
6. Elements color-coded for easy field verification  
(Color coding can be by 'dot' or 'complete element')
7. Optional lock-down bolt and washer available

## Dimensional + Model Selection Data

### FMD models



(Refer to page 2 for isolator star rating system)

### 0.5" deflection series ★★

Model	Load Range (lbs)	Isolator Dimensions (inches)								Color
		A	B	C	D	E	F	G	H	
FMD-A-1	1 to 30	1-3/4	2-3/8	3-1/8	5/16	11/32	1-1/4	1-3/8	3/16	BLUE
FMD-A-2	31 to 40									RED
FMD-A-3	41 to 70									GREEN
FMD-A-4	71 to 115									BLACK
FMD-B-1	116 to 130	2-3/8	3	3-7/8	3/8	11/32	1-3/4	1-3/4	7/32	BLUE
FMD-B-2	131 to 165									RED
FMD-B-3	166 to 235									GREEN
FMD-B-4	236 to 375									BLACK
FMD-E-3	376 to 400	2-3/8	3-1/8	4	3/8	1/2	2	1-3/4	1/4	GREEN
FMD-E-4	401 to 500									BLACK
FMD-F-1	501 to 750	3-5/8	4-3/4	5-7/8	1/2	9/16	3-1/2	2-3/4	3/8	BLUE
FMD-F-2	751 to 1000									RED
FMD-F-3	1001 to 1500									GREEN
FMD-F-4	1501 to 2200									BLACK

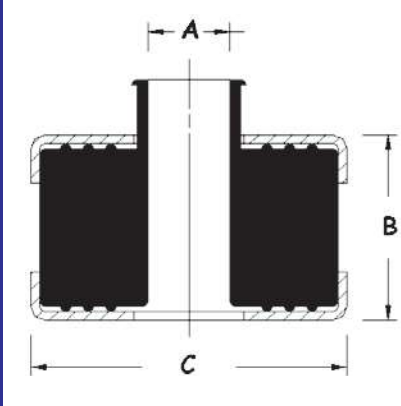
# Light Duty Hangers

## Features + Application Information

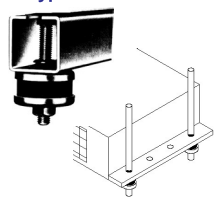
1. Elements incorporate projected collar to prevent metal to metal contact between rod and cup
2. Includes steel cups / plates for uniform loading
3. Ozone + water resistant elastomer
4. AVHM provides up to 17dB(A) noise reduction
5. AVHM series designed for use with all thread rod
6. HNW series designed for use with wire, strap e.g. false ceiling, suspended attic equipment

## Dimensional + Model Selection Data

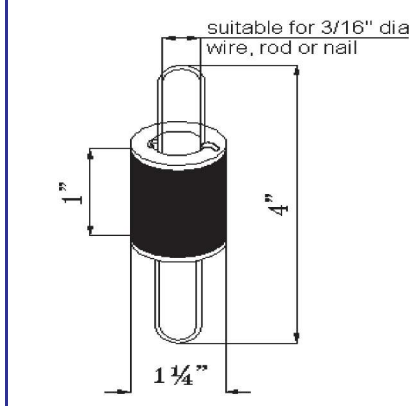
### AVHM models



### Typical installation



### HNW models



### Typical installation



(Refer to page 2 for isolator star rating system)

### AVHM series ★

Model	Load Range (lbs)	Defl. (inch)	Dimensions (in.)		
			A	B	C
AVHM-50	1 to 110	1/5	0.43	0.73	1.28
AVHM-100	111 to 220	1/5	0.43	1.02	1.67

(Refer to page 2 for isolator star rating system)

### HNW series ★

Model	Load range (lbs)	Defl. (inch)	Color
HNW-1	1 to 65	1/5	RED
HNW-2	66 to 120	1/5	BLACK
HNW-3	121 to 200	1/5	BLUE