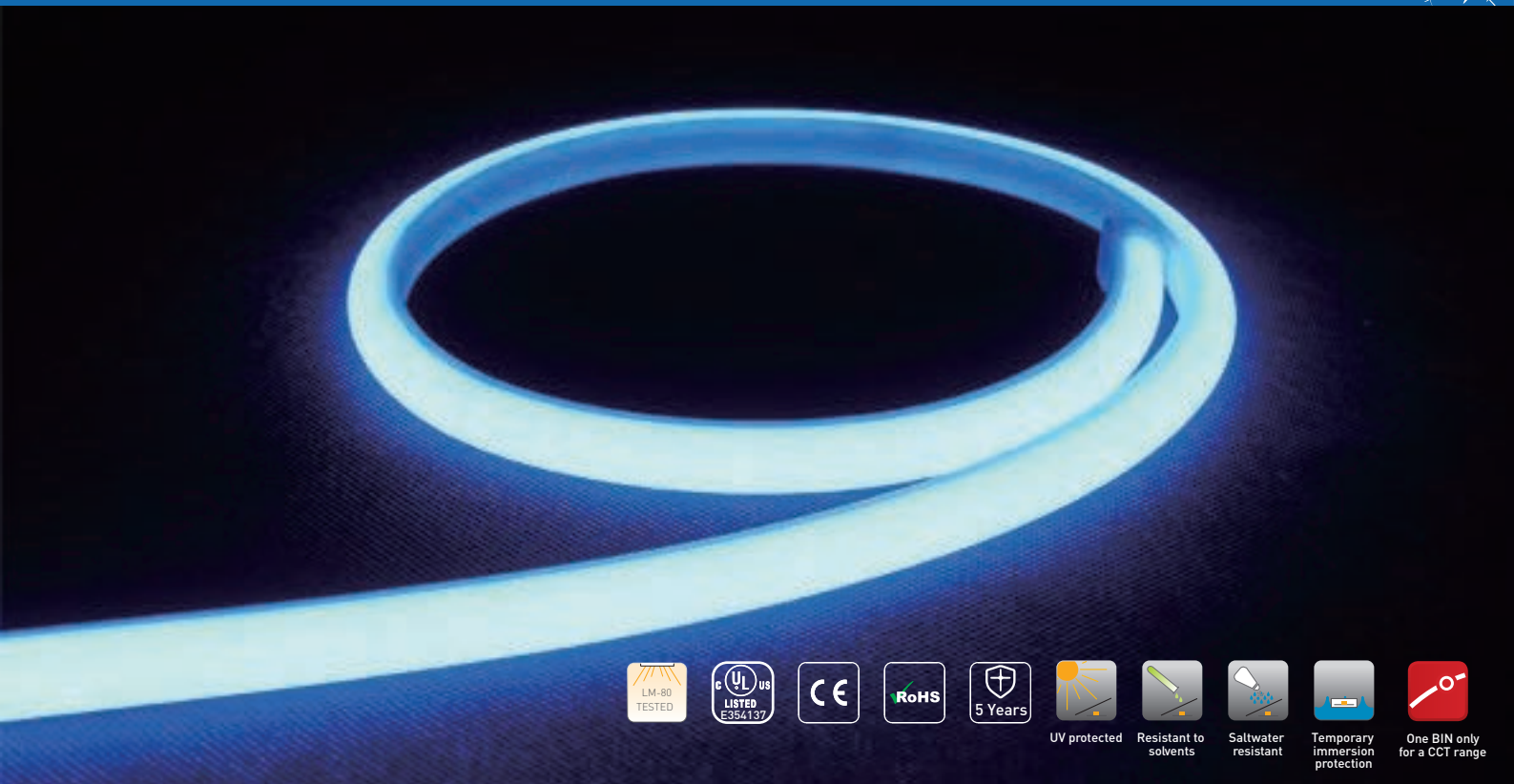


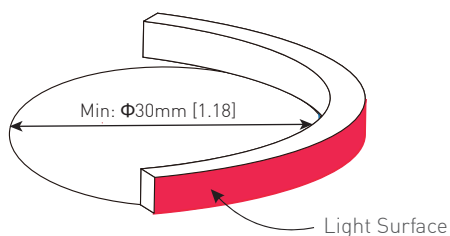
SILICONE ARCHITECTURE SOLUTION



Features

- ▼ Silicone extrusion in high UV-resistant
- ▼ V-2 flame retardance
- ▼ Max run length in 30m by two ends powered
- ▼ 24V DC with current regulator
- ▼ IP68 tested
- ▼ Minimum bending diameter in 30mm [1.18in]

Bending



Application


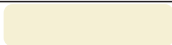






- ▼ Architecture lighting
- ▼ Outdoor/indoor decoration lighting

More info, please contact:
Tel: +86 0755 2308 9165
Email: sales@dayup-lighting.com
www.dayup-lighting.com


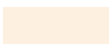
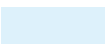





SILICONE ARCHITECTURE SOLUTION

Specifications

LED Type	DP-NL-2	Materials	Silicone
LED Q'ty/m	126pcs	IP Rated	IP68
Input Voltage	24VDC with current regulator	Installation	Bracket, or Aluminum channel
Power Consumption/m	8.64W/m	Working Temperature	-40~+80°C
Cutting length	56mm	Running Length	Single feed: 15m / 49.2 feet Double feed: 30m / 98.4feet
Viewing Angle	172°	Certification	CE, RoHs
Dimmable	Yes	Warranty	5 years

Order Code	CCT Wavelength/Color	Lumen/M
DP-NL-2	 Warm White 3000K	408-726
	 Daylight 4000K	408-726
	 Cool White 6500K	408-726
	 Red 618-630nm	200-280
	 Green 517.5-5275nm	345-426
	 Blue 465-470nm	127-172
	 Yellow 588-594nm	163-200
	 Orange 606-610nm	172-272

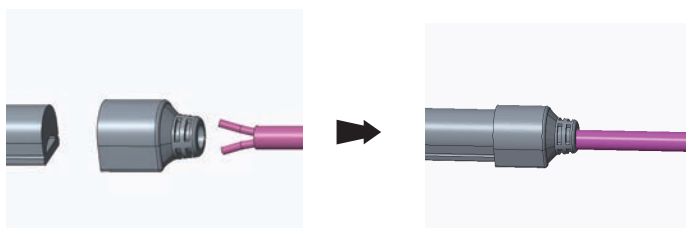
Color Available

		
3000K	4200K	6500K
		
Yellow	Orange	Red
		
Green	Blue	

Types of Connectors

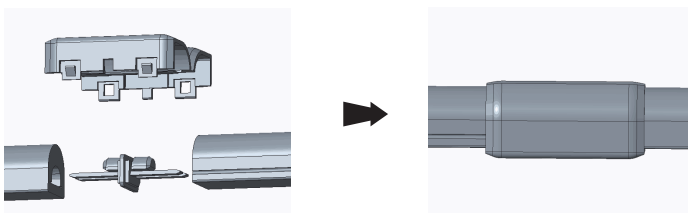
End Exit Cable

Connects light to power supply with pre-installed bottom cable, IP68
Standard 60mm cable length(For longer lengths please contact us).



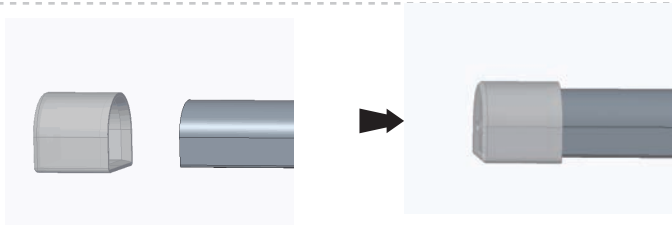
Linear Re-connector

Connects two pieces of light together with the re-connection kits.
IP68Connectors



End Cap

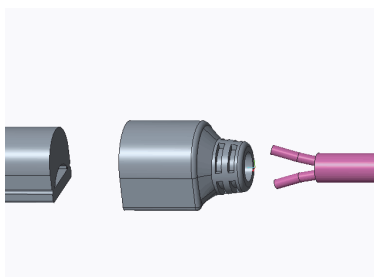
Pre-installed termination protection of the light. IP68



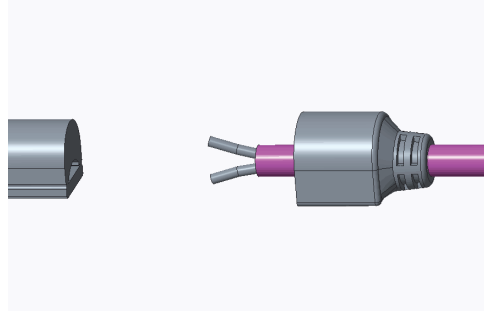
Operation Guide of Connectors //

Power Connector Version (Step1--Step 4)

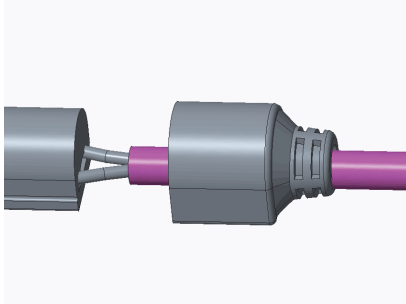
Step 1: Power connector structure



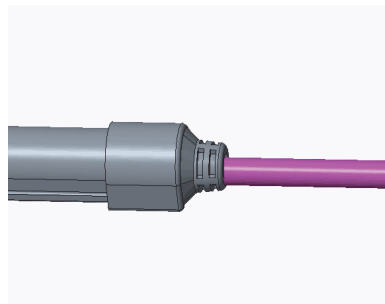
Step 2: Solder the power lead on the back of the PCB



Step 3: Glue the joint of strip and connector housing

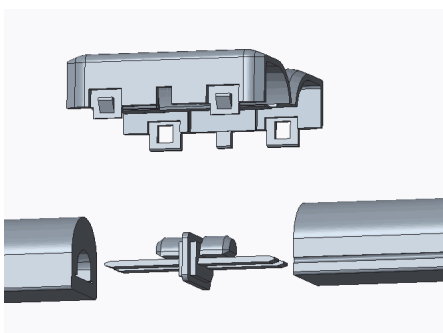


Step 4: Final Power Connector picture

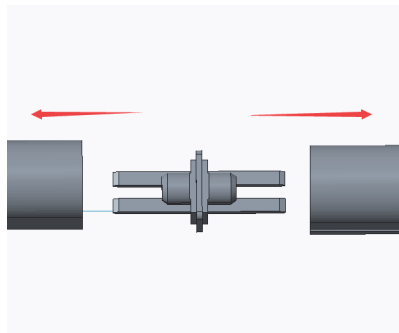


Re-connector installing guide (Step1--step5)

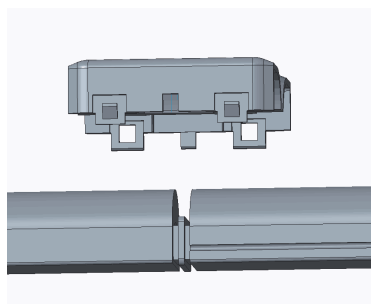
Step 1: Re-connector structure



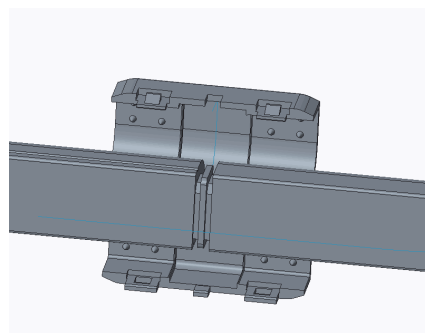
Step 2: Insert the pin into the strip (NOTE: Pin on the back of PCB)



Step 3: Glue at the joint of strip and the housing



step 4: After glue close the housing



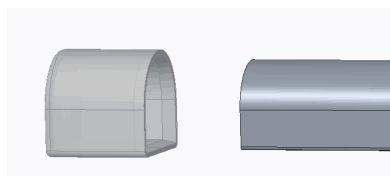
SILICONE ARCHITECTURE SOLUTION

Step 5: Final Re-connection picture

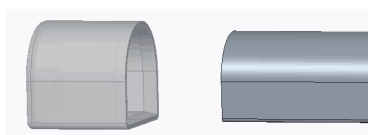


End Cap installing guide (Step 1--Step 3)

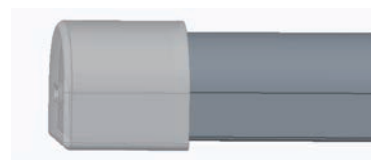
Step 1: End Cap Structure











Step 2: Glue at the end of strip, put the end cap



Step 3: Final End Cap picture



Optional Accessories Chart

Image	Part Code	Part Name	Quantity-15m	Quantity-30m
	DP-NL-2-JK	Joining Kit	1 set	2 sets
	DP-NL-2-EC	End cap w/o hole	4 pcs	8 pcs
	DP-NL-2-ECH	End cap w/o hole	2 pcs	4 pcs
	DP-NL-2-ACL	Self-locking mounting kit 1m + 2pcs clips	/	/
	DP-NL-2-LMC	Locking mounting clip	32 pcs	63 pcs
	DP-NL-2-AL	Aluminum profile 1m	32 pcs	63 pcs
	DP-NL-2-MC	Silicone mouting clip	/	/
	DP-NL-2-G	Portable Silicone glue 45ml	2 pcs	4 pcs

Remark: Data to change according to reality without prior notice.

SILICONE ARCHITECTURE SOLUTION

Tools Required



Ratcheting Cutter



Electric Screwdriver



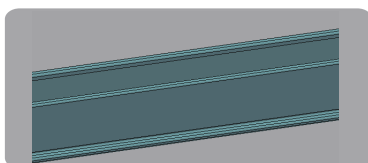
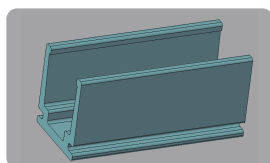
Brush



Portable Silicone glue

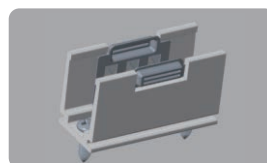
Mounting Channel

Aluminum Mounting Channel



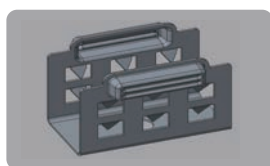
Standard Length	Part Number
35mm /	DP-NL-2-AS
1000mm / 39.37 inch	DP-NL-2-AL

Self-locking Aluminum Mounting Channel



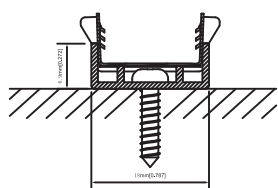
Standard Length	Part Number
35mm /	DP-NL-2-ACS
1000mm / 39.37 inch	DP-NL-2-ACL

Clips Mounting

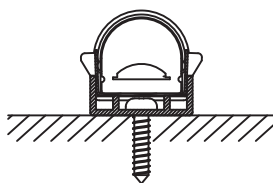


Standard Length	Part Number
20mm /	DP-NL-2-MC

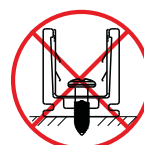
Mounting



Fixed Channel without Light

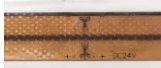


Fixed Channel with Profile Light

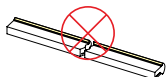


SILICONE ARCHITECTURE SOLUTION

Warning



Cutting mark



Cutting profile should be flat



No left and right bending

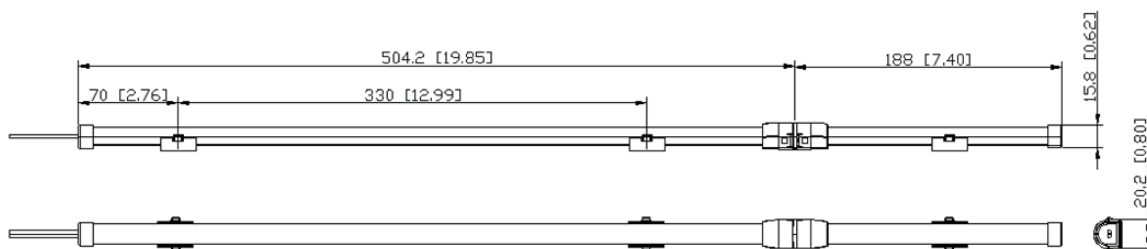


No 90° bending



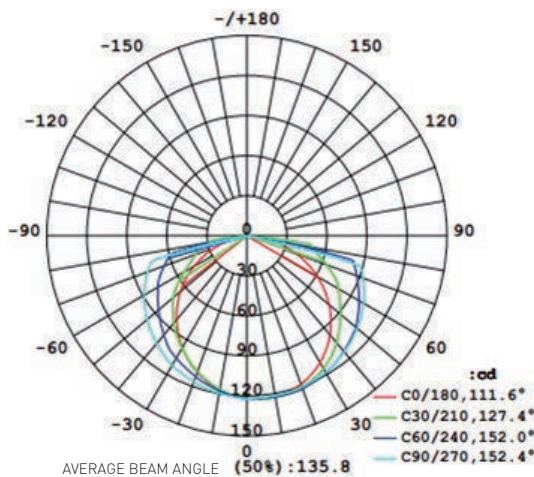
No bending repeatedly

Dimensions



Unit:mm[in]

Luminous Intensity Distribution Diagram



SILICONE ARCHITECTURE SOLUTION

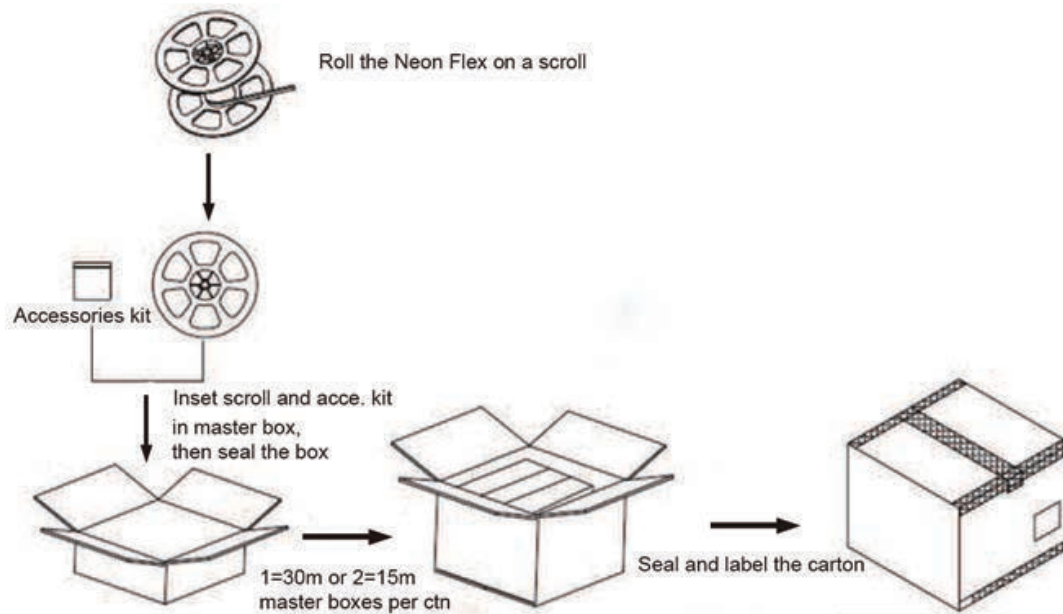
Power Supply Configuration Table

Product standard length (m)	Rated Current (A)	Rated Voltage (V)	Rated Wattage (W)	Power Supply (W)	Power Feed
1	0.36	24	8.64	12	Single end
5	1.8	24	43.2	60	Single end
10	3.6	24	86.4	120	Single end
15	5.4	24	129.6	180	Single end
20	7.2	24	172.8	240	Both ends
25	9	24	216	300	Both ends
30	10.8	24	259.2	360	Both ends

Installation Precautions

1. All installation and connection must be conducted by professional electrician.
2. 24VDC Class 2 Power Supply must be used with this light. Make sure to use appropriate PSU.
3. Ensure the overall length of the S tyle Neonflex does not exceed the maximum run length as 15m-one end powered; 30m-two ends powered
4. Disconnect power before installing or servicing to avoid electrical shock.
5. For wet location installations, seal all possible water entry points and covers using by silicone. Failure to do so may result in product defective.

Packing info



Product Code	Net Weight / CTN	Gloss Weight / CTN	Units / CTN	Carton Size
DP-NL-2 (15m)	10.71 (1 ± 10%) kgs	14.13 (1 ± 10%) kgs	2 rolls(1 rolls=2x15m)	430x400x390mm
DP-NL-2 (30m)	10.51 (1 ± 10%) kgs	13.93 (1 ± 10%) kgs	2 rolls	430x400x390mm