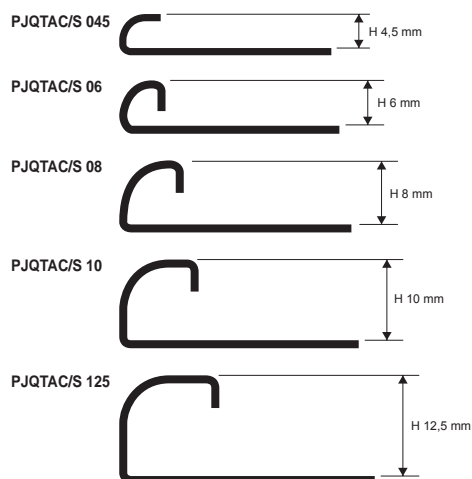
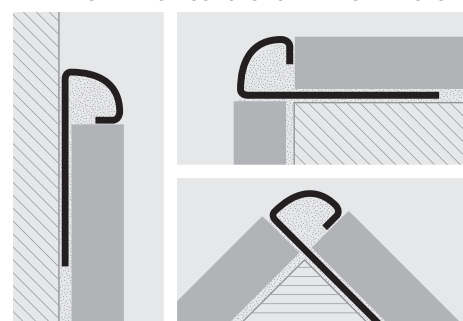


PROJOLLYQUART

POLISHED, SUPER POLISHED and SATINED
STAINLESS STEEL AISI 304/1.4301-V2A



EXAMPLES AND INSTRUCTIONS FOR LAYING METHODS



1: Choose the "PROJOLLYQUART" with suitable height for the thickness of the covering. 2: Apply the adhesive onto the area of application of the profile. 3: Lay and align the profile, cut to the necessary length, pressing the perforated flange into the adhesive. 4: Lay the tiles, aligning them so that the top edge of the profile is "flush" with the tile. 5: Fill the profile/tile area of contact with adhesive to prevent the accumulation of water in any voids.

PROJOLLYQUART has been designed and conceived in still more squared form, with "a quarter of circle" shape, in order to offer an alternative to PROJOLLYSQUARE and PROJOLLY as well. It facilitates the laying process eliminating the fragile ceramic corner tiles. It's used for the external corners of the tiles, in order to terminate the finishing of wall coverings, for platforms, stair steps, bathtubs, etc. It guarantees the impeccable work, ensuring considerable aesthetic effect as well. Thanks to the round finishing it strengthens the tile edge avoiding their chipping and breakages. Required by new European regulations on safety and accident prevention in public and private places. Available in capsules and three-axial joints for internal and external angles, end caps and joints. Chromatic combining with "PROLISTEL" panelist in aisi 304/1.4301-V2A glossy, super polished or glazed stainless steel recommended. Besides the "PROFINLIST" and "PROLISTEL" aluminium panelists available in many finishing versions.



POLISHED STAINLESS STEEL AISI 304/1.4301-V2A with protective film
bar length 2,7 LM - packaging 40 Pcs - 108 LM - 10/10mm

Article	H mm		
PJQTAC 045	4,5		
PJQTAC 06	6		
PJQTAC 08	8		
PJQTAC 10	10		
PJQTAC 125	12,5		

SUPER POLISHED STAINLESS STEEL AISI 304/1.4301-V2A thermo packed
bar length 2,7 LM - packaging 40 Pcs - 108 LM - 10/10mm

Article	H mm		
PJQTACML 045	4,5		
PJQTACML 06	6		
PJQTACML 08	8		
PJQTACML 10	10		
PJQTACML 125	12,5		



SATINED STAINLESS STEEL AISI 304/1.4301-V2A with protective film
bar length 2,7 LM - packaging 40 Pcs - 108 LM - 10/10mm

Article	H mm		
PJQTACS 045	4,5		
PJQTACS 06	6		
PJQTACS 08	8		
PJQTACS 10	10		
PJQTACS 125	12,5		

COLOURS



(for a precise assessment of colours and finishes, see the relative enclosed sheet)

CAPSULES, CAPS and JOINTS for three-way linking elements

POLISHED, SUPER POLISHED and SATINED STAINLESS STEEL AISI 304/1.4301-V2A / PLASTIC

CAPSULES and CAPS - POLISHED STAINLESS STEEL AISI 304/1.4301-V2A

Article	H mm		pack. 10 pcs	pack. 2 pcs
CPJQTAC 045 (outside)	4,5			
IPJQTAC 045 (inside)	4,5			
CPJQTAC 06 (outside)	6			
IPJQTAC 06 (inside)	6			
CPJQTAC 08 (outside)	8			
IPJQTAC 08 (inside)	8			
CPJQTAC 10 (outside)	10			
IPJQTAC 10 (inside)	10			
CPJQTAC 125 (outside)	12,5			
IPJQTAC 125 (inside)	12,5			

TPJQTAC 045-06-08-10-125 4,5-6-8-10-12,5

CAPSULES - SUPER POLISHED STAINLESS STEEL AISI 304/1.4301-V2A

Article	H mm		pack. 10 pcs	pack. 2 pcs
CPJQTACML 045 (outside)	4,5			
IPJQTACML 045 (inside)	4,5			
CPJQTACML 06 (outside)	6			
IPJQTACML 06 (inside)	6			
CPJQTACML 08 (outside)	8			
IPJQTACML 08 (inside)	8			
CPJQTACML 10 (outside)	10			
IPJQTACML 10 (inside)	10			
CPJQTACML 125 (outside)	12,5			
IPJQTACML 125 (inside)	12,5			

CAPSULES and CAPS - SATINED STAINLESS STEEL AISI 304/1.4301-V2A

Article	H mm		pack. 10 pcs	pack. 2 pcs
CPJQTACS 045 (outside)	4,5			
IPJQTACS 045 (inside)	4,5			
CPJQTACS 06 (outside)	6			
IPJQTACS 06 (inside)	6			
CPJQTACS 08 (outside)	8			
IPJQTACS 08 (inside)	8			
CPJQTACS 10 (outside)	10			
IPJQTACS 10 (inside)	10			
CPJQTACS 125 (outside)	12,5			
IPJQTACS 125 (inside)	12,5			

TPJQTACS 045-06-08-10-125 4,5-6-8-10-12,5

JOINTS - PLASTIC

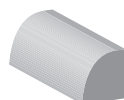
Article	H mm		pack. 10 pcs	pack. 2 pcs
---------	------	--	-----------------	----------------

GIJQT 045-06-08-10-125 4,5-6-8-10-12,5

END CAP
TPJQTAC/S 045-06-08-10-125



JOINT
GIJQT 045-06-08-10-125



OUTSIDE CAPSULES



INSIDE CAPSULES

