



AQUA GAS GROUP



SOLE S.A. is the inventor of the closed circuit Solar Water Heater.



Advantages

- Maximizes efficiency
- No need for refilling the solar loop
- Best aesthetic results. Low version with hidden tank available
- Easy to install
- Minimum maintenance needed
- Anode protection

Eurostar Eco Collector



The EUROSTAR ECO collector casing is made of specially designed extruded aluminium profile, without any external connections, screws, nuts or rivets. The Rockwool insulation will maintain very high temperatures achieving an incredibly high efficiency.

The absorber is composed of Blue Selective Aluminium fins 0,50mm thickness, welded to copper pipes with laser welding.

The thermal liquid achieves maximum transfer of heat to the water while protecting the system against scaling, rusting, freezing and over heating

Eurostar Eco Tank



The EUROSTAR ECO tank has a mild steel external casing, with high temperature oven powder coating for maximum protection from rain, sun and salty environment, ensuring durability and an elegant appearance.

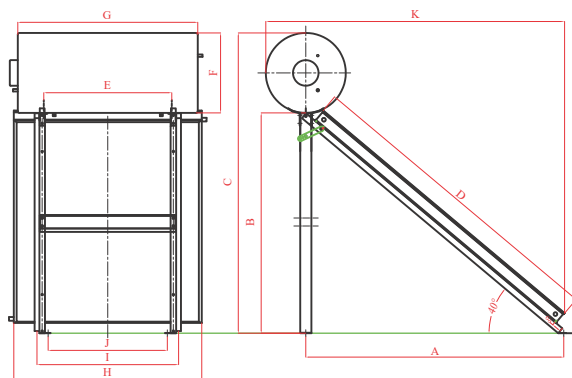
The FREON FREE polyurethane is casted under pressure in the tank, surrounding the cylinder and maintaining hot water for upto 48 hours.

The new revolutionary heat exchanger of the closed circuit assures instant hot water at very high temperature. The tank is made of low carbon steel with a double "enameling" coating (glass), oven treated at 860°C.

The magnesium anode effectively protects the cylinder from electrolysis. The backup electric heater ensures hot water even in very cloudy days.

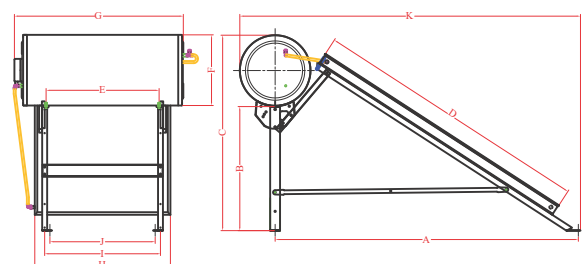
The eurostar eco is **eco-friendly** Thermosiphon solar water heater completely made from material that can be recycled





STANDARD HEIGHT DIMENSIONS mm.

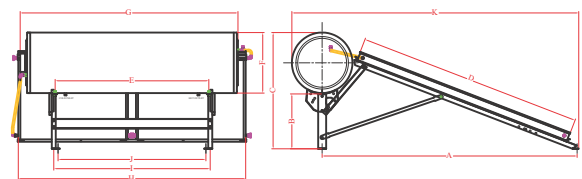
TYPE	A	B	C	D	E	F	G	H	I	J	K
80-1-S100	897	776	1216	1026	480	440	870	960	565	425	1123
100-1-S125	1092	940	1380	1280	650	440	1030	960	735	595	1317
125-1-S150	1291	1107	1547	1540	800	440	1080	960	895	745	1516
150-1-S200	1613	1377	1877	1960	800	500	1195	960	895	745	1868
150-1-S230	1613	1377	1877	1960	800	500	1195	1165	895	745	1868
200-1-S200	1613	1377	1907	1960	800	530	1215	960	895	745	1883
200-1-S230	1613	1377	1907	1960	800	530	1215	1165	895	745	1883
200-1-S260	1747	1489	2019	2135	800	530	1215	1238	895	745	2017
300-2-S200	1613	1377	1907	1960	1345	530	1905	1980	1439	1289	1883
300-2-S230	1613	1377	1907	1960	1345	530	1905	2390	1439	1289	1883



LOW HEIGHT DIMENSIONS mm.

TYPE	A	B	C	D	E	F	G	H	I	J	K
150-1-S200	2147	878	1383	1960	800	500	1195	960	820	745	2411
200-1-S230	2147	878	1413	1960	800	530	1215	1165	820	745	2426
300-2-S200	2147	878	1413	1960	1345	530	1905	1980	1370	1295	2426

The new thermosiphon system of SOLE is also available in low height in three sizes, 150, 200 and 300ltr.



EXTRA LOW HEIGHT DIMENSIONS mm.

TYPE	A	B	C	D	E	F	G	H	I	J	K
150-1-S200	2231	480	988	1960	800	500	1195	960	820	745	2495
200-1-S230	2231	480	1018	1960	800	530	1215	1165	820	745	2510
300-2-S200	2231	480	1018	1960	1345	530	1905	1980	1370	1295	2510

THERMOSIPHON SYSTEMS

EUROSTAR ECO SPECIFICATIONS

TYPE	80-1-S100	100-1-S125	125-1-S150	150-1-S200	150-1-S230	200-1-S200	200-1-S230	200-1-S260	300-2-S200	300-2-S230
------	-----------	------------	------------	------------	------------	------------	------------	------------	------------	------------

SOLAR COLLECTORS

NUMBER OF COLLECTORS	1	1	1	1	1	1	1	1	2	2
AREA OF COLLECTORS m ²	0.99	1.23	1.48	1.88	2.28	1.88	2.28	2.64	3.76	4.56
DIMENSIONS mm	1026x960x81	1280x960x81	1540x960x81	1960x960x81	1960x1165x81	1960x960x81	1960x1165x81	2135x1238x81	1960x960x81	1960x1165x81
WEIGHT kg	20,00	22,00	24,00	29,50	35,50	29,50	35,50	40,00	59,00	71,00
FRAME	Aluminum profile. Free of screws and rivets.									
COVER	Tempered low iron prismatic glass 3.2 mm. 90,5% transmission.									
SEALING	Acrylic foam - Structural Silicon									
INSULATION	Rockwool 40mm (50kg/m ³) back and Glass wool 20 mm (30kg/m ³) sides									
ABSORBER MATERIAL	Blue Selective Aluminum fins 0,50mm thickness, welded to copper pipes with laser welding.									
ABSORPTION (α)	95% (± 0.02)									
EMISSIVITY (ε)	5% (± 0.02)									
EFFICIENCY (η _p)	0.763									
MAX. WORKING PRESSURE	1000kPa									
MAX. WORKING TEMPERATURE	150°C									

TANK

NOMINAL CAPACITY (lt)	80	100	125	150	150	200	200	200	300	300
WEIGHT EMPTY (kg)	32	41	49	55	55	61	61	61	95	95

BOILER BODY The boiler "body" is made from USD 37.2 steel plate. The boiler is (glass) enameled with the advanced double "direct" method "fired" at 860°C

HEAT EXCHANGER Internal heat exchanger made from 3.0 mm EN-10219 steel certified for testing pressure at 22,5 bar & operating pressure of 15 bar

INSULATION Freon free Polyurethane 40-50mm (40kg/m³) casted under pressure.

EXTERNAL COVER Steel sheet galvanized, powder coated, oven treated RAL 9006.

ANODE PROTECTION Magnesium rod

MAX. WORKING PRESSURE 10 bar

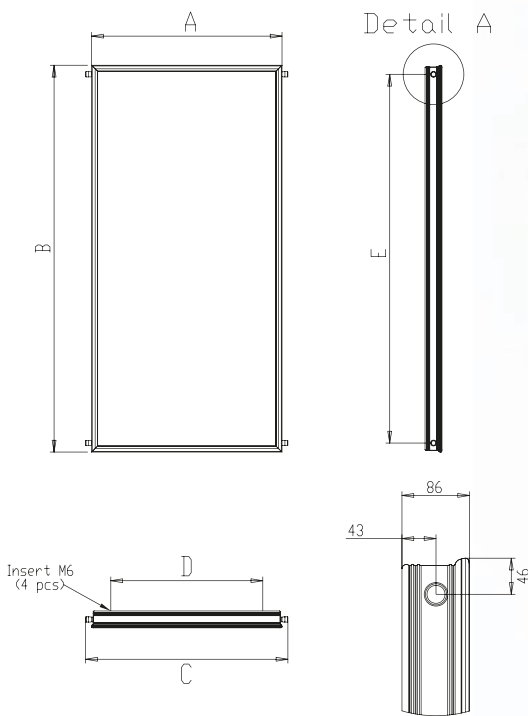
MAX. WORKING TEMP. OF SOLAR CIRCUIT 150°C

MAX. WORKING PRESS. OF SOLAR CIRCUIT 15 bar

TEST PRESSURE OF SOLAR CIRCUIT 22,5 bar

Dimensions and Technical Data of the Solar Collectors

Model	Absorber	Weight (kg)	Content of liquid (lt)	Dimensions (mm)				
				A	B	C	D	E
Climasol 1.75	Copper with Selective coating	38	1.30	1000	1760	1050	895	1668
Climasol 2.00	Copper with Selective coating	41	1.36	970	1970	1020	895	1878
Climasol 2.50	Copper with Selective coating	49	1.64	1175	1970	1235	895	1878
Climasol 2.70	Copper with Selective coating	55	1.86	1248	2145	1298	895	2053
Wasco 1.75	Aluminium with Selective coating	37	1.30	1000	1760	1050	895	1668
Wasco 2.00	Aluminium with Selective coating	40	1.36	970	1970	1020	895	1878
Wasco 2.50	Aluminium with Selective coating	48	1.64	1175	1970	1235	895	1878
Wasco 2.70	Aluminium with Selective coating	54	1.86	1248	2145	1298	895	2053
NS 1.75	Aluminium with Non Selective coating	37	1.30	1000	1760	1050	895	1668
NS 2.00	Aluminium with Non Selective coating	40	1.36	970	1970	1020	895	1878
NS 2.50	Aluminium with Non Selective coating	48	1.64	1175	1970	1235	895	1878
NS 2.70	Aluminium with Non Selective coating	54	1.86	1248	2145	1298	895	2053



Absorber

Copper tubes and copper or aluminium fin with selective or non selective coating.

Pressure test 9 bar

Pressure max. 6 bar

Insulation

Back: 40 mm rock wool (50kg/m³)

Side: 20 mm glass wool (30kg/m³)

Casing

Aluminium profile powder coated

Free of bolts and rivets.

Glass tempered

Tempered low iron prismatic glass 4 mm.

Sealing EPDM Rubber.

Connector

Compression union 22x22

Recommended Flow 40 ltr/h/m²



Commitment to the environment



Forced Circulation Kits

Model	Storage tank	Climasol Collector	Pressure Regulator	Solar Station (pump control unit)	Expansion tank 25ltr	Support frame	Set of fitting accessories	Antifreeze "glycol" 18kg
FCK-150	BL1-150ltr	1 x 2.70m ²	1	1	1	1 x 1	1	1
FCK-200	BL2-200ltr	2 x 2.00m ²	1	1	1	1 x 2	1	2
FCK-300	BL2-300ltr	2 x 2.70m ²	1	1	1	1 x 2	1	2
FCK-420	BL2-420ltr	3 x 2.70m ²	1	1	1	1x1+1x2	1	3
FCK-500	BL2-500ltr	4 x 2.00m ²	1	1	1	2 x 2	1	4

BL1 = Storage tank with 1 heat exchanger / BL2 = Storage tank with 2 heat exchangers / Optional electric element 2-4kW

ADVANTAGES

- Maximizes efficiency
- Best aesthetic results
- Easy to install (tile or flat roof)
- Compatible with most types of auxiliary heating
- Supplied in one package

QUALITY

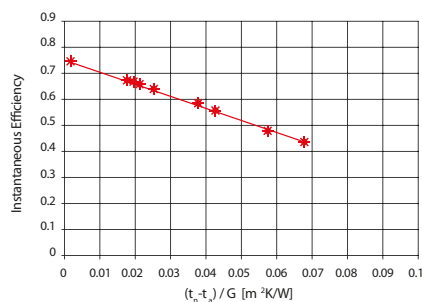
SOLE products are produced under rigorous Quality Standards ISO 9001:2008
 SOLE solar collectors have been certified according to EN 12975-1 & EN 12975-2 and are granted the Solar Key - mark.
 Only top quality certified raw materials are used in SOLE's production plant



PHOTONIO SOLAR A.C. - GREECE



BURJ KHALIFA TOWER - DUBAI





Pump with peripheral impeller



Pump with peripheral impeller



Self-priming "JET" pumps



Stainless steel standardized "EN 733" pumps



Multi-stage submersible pumps



4" Submersible electric solar pump



Pump with peripheral impeller



Electronic pump controllers



Pressure sets with vessel



Vertical multi-stage pumps



Centrifugal pumps



Centrifugal pumps



Multi-stage centrifugal pumps



Multi-stage centrifugal pumps

The enclosed CD contents documents related to our products.



Business card slot

Solar Water Heater

EUROSTAR ECO

Eurostar: an innovation among solar water heaters, created with high tech engineering and respect for the environment.



MADE IN GREECE

Pedrollo Pumps are distributed from our centrally located warehouse that provide fast delivery thereby ensuring that the quality of service is as high as the quality of the water pump product. The range consists of 50 families of water pumps (including drainage, submersible and shallow well models)

covering most applications in the domestic, commercial, agricultural and industrial fields.

AQUAGAS supplies and provides full assembly and installation services for the full range of pump systems.

**Domestic, Civil, Commercial Light Industrial
Agricultural Use**



SOLE
SOLAR SYSTEMS MANUFACTURER

SOLE

was the first Greek company to be involved in the renewable energy sources sector, since its foundation in 1974. Until today, it still maintains its leadership in the European solar water heater market exporting 70% of its production all over the world. Sole produces solar thermal collectors, thermosyphon solar water heaters, compact solar water heaters and undertakes projects for sanitary or process hot water, room heating, pool heating and Solar Air Conditioning.

PEDROLLO
the spring of life



MADE IN ITALY


AQUA GAS GROUP

P.O.Box : 56790, Dubai, U.A.E.
Tel : +971 4 882 9588
Fax : +971 4 882 9599
E-mail : aquagas@emirates.net.ae
Website : www.aquagasdx.com