

EMPLOYEE SELF SERVICE



VISITOR MANAGEMENT



CAFETERIA MANAGEMENT



ACCESS CONTROL



TIME-ATTENDANCE



JOB PROCESSING  
AND COSTING



CONTRACT WORKERS MANAGEMENT



FIELD VISIT MANAGEMENT



## COSEC SOLUTIONS

- Time-Attendance
- Employee Self Service
- Access Control
- Visitor Management
- Cafeteria Management
- Contract Workers Management
- Job Processing and Costing
- Field Visit Management



## MATRIX R&D

All Matrix products are indigenously designed, passing through the various product development stages beginning with Product Conceptualization, Hardware Design Section, Software Designing and Engineering. With more than 40% of its human resources dedicated to the development of new products, Matrix R&D is the foundation of its growth and substance. The R&D team designs products conforming to relevant international standards. Matrix makes substantial investment in R&D tools and equipment to stay abreast of the latest technological changes. The Indian Ministry of Science and Technology has granted DSIR (Department of Scientific & Industrial Research) recognition to the Matrix R&D Centre for its contribution to the Industry.



## MATRIX MANUFACTURING

Based at Vadodara in India, Matrix Manufacturing unit is operated and managed by a team of professionally qualified and dedicated engineers. The structure houses various sections like Production, Quality Control and Supply Management with a production capacity of about 1,000,000 ports per annum. With more than 60 Products, Matrix Manufacturing has been delivering cutting-edge technology products for more than two decades now



## MATRIX MARKETING

The Marketing Team at Matrix strongly believes in value based marketing and strong networking. Right from product conceptualization and designing to commercial marketing, Matrix adopts a completely global approach. Backed by an extensive network of more than 2,500 channel partners across the globe, Matrix ensures that the products serve the customer needs faster and longer. Various Marketing Tools and activities including strong marketing collaterals, solution designing, online and print media communication, and promotional and networking activities are a very elemental to Matrix Marketing.



## MATRIX ACHIEVEMENTS

- Frost and Sullivan's 2017 India Electronics Security Visionary Innovation Leadership Award
- SECONA Shield Award 2015 for Best Access Control Hardware
- Awarded as one of India's 100 Innovative SME Company 2015 by INC. Magazine
- The Good Design Award 2013 presented by Japan Institute of Design Promotion
- India Design Mark Award 2012 for its Security Products
- IF Product Design Award 2011 for its Security Products
- RED DOT Design Award 2010 for its Security Products
- The Best SSI Unit Award 2008 by the Federation of Gujarat Industries.
- The Best Electronics Company Award 2008, 2009 and 2014 from the Gujarat Electronics and Software Industries Association (GESIA)
- The 2007 IETE Corporate Award for Excellence in Computer & Telecommunication Systems by the Institution of Electronics & Telecommunication Engineers, India
- The 2004 Award for Excellence in Professional Electronics conferred by the Ministry of Communication and Information Technology

## MATRIX AT A GLANCE

- 60+ Security Products
- 700+ Man-Years of R&D Experience
- 2,500+ Channel Partners
- 1 million+ Customers
- 24x7 Technical Support
- Global Footprints: Asia, Europe, Africa, Northern and Southern America, Middle East and Australia
- Quality Certifications: CE, FCC, TEC, RoHS, STQC

## COSEC APPLICATIONS

### COSEC SOLUTIONS



#### **TIME-ATTENDANCE (TAM):**

COSEC Time-Attendance is an enterprise grade solution for organizations with multiple locations spread across geographic regions. It automates all Time-Attendance and Leave Management processes right from recording entries and exits to report generation and salary processing.



#### **EMPLOYEE SELF SERVICE (ESS):**

COSEC Employee Self Service is a comprehensive web-based employee portal that allows COSEC users to monitor and manage all their time-attendance and leave options. Employees and managers can perform related tasks intuitively, reducing a significant amount of time they spend on issues related to attendance and leaves.



#### **ACCESS CONTROL (ACM):**

COSEC Access Control protects an organization's assets and manpower by controlling users' entry based on their credentials. (Face Recognition, Palm Vein, Fingerprint and RFID Card) The module comes with advance access control policies integrated with the door controller.



#### **VISITOR MANAGEMENT (VMM):**

COSEC Visitor Management module automates the entire process of registering a visitor, printing a pass, and capturing detailed information in a few seconds. This module also allows the host to greet visitors in a professional manner.



#### **CAFETERIA MANAGEMENT (CMM):**

COSEC Cafeteria Management software is a solution automating the process starting from placing an order to delivery, including the payment. It also allows item tracking, speedy transaction, and prevents wastage of food and error in accounting.



#### **CONTRACT WORKERS MANAGEMENT (CWM):**

COSEC Contract Workers Management is specifically designed for large organizations to help them manage all their contract workers management processes. This includes planning, work orders, enrollment, e-pass, attendance, timings, and access control. This solution also allows managers and contractors to improve labor productivity and enhance operational efficiency, bringing down overall cost.



#### **JOB PROCESSING AND COSTING (JPC):**

COSEC Job Processing and Costing module allows managers to divide a project into multiple jobs and keep track of man hours spent after each pre-defined job. Managers can also pre-define the man hours expected to be spent after each job. This module help managers keep track of the total man hours spent on each job, and in turn on the payments to be made for the same simultaneously.



#### **FIELD VISIT MANAGEMENT (FVM):**

COSEC Field Visit Management is an easy tool for organizations having employees deployed in the field. The software provides live tracking of field employee schedules via reports with real-time notifications on exceptions.

## 10 REASONS TO INVEST IN MATRIX COSEC



### MULTIPLE CREDENTIALS

- Face Recognition, Palm Vein and Fingerprint - Multispectral and Optical
- RFID Cards - Smart Cards and Proximity Cards



### MULTIPLE CONNECTIVITY OPTIONS

- Wired and Wireless Connectivity Options
- 4G/LTE/3G, Wi-Fi, PoE, Ethernet, and USB



### COMPREHENSIVE AND FLEXIBLE ATTENDANCE POLICIES

- User-wise Late-In, Early-Out, Over Time, C-OFF and Absenteeism Policies
- Fully Configurable to Meet Diverse and Disparate Needs



### CUSTOMIZED REPORTS GENERATION

- 300+ Customized Reports using Multiple Filters
- User Defined Report Templates with Customized Fields



### EASY INTEGRATION

- Direct Integration with Payroll, ERP, HRM, Active Directory and Third Party Hardware
- API Integration at Three Levels – Function, Platform, and Device
- Integration using Export, Import, and Sharing Database Tables



### AUTOMATIC ALERTS AND SCHEDULER SERVICES

- Automatic SMS and E-mail Notifications on Pre-defined Events
- Scheduler Services like Backup, Leave Credit, Report on E-mail at Configured Time



### WEB BASED MANAGEMENT

- Real-time Monitoring and Control from One Place
- Automatic Data Push from Devices to Central Server
- Host Either On-premise or Cloud



### AWARD WINNING DESIGN AND AESTHETICS

- Many International Awards for Product Engineering and Aesthetics
- Gold Flash PCBs, Touch Sense Keys and Heavy Duty Components for Long Life



### EASY SCALABILITY AND FLEXIBILITY

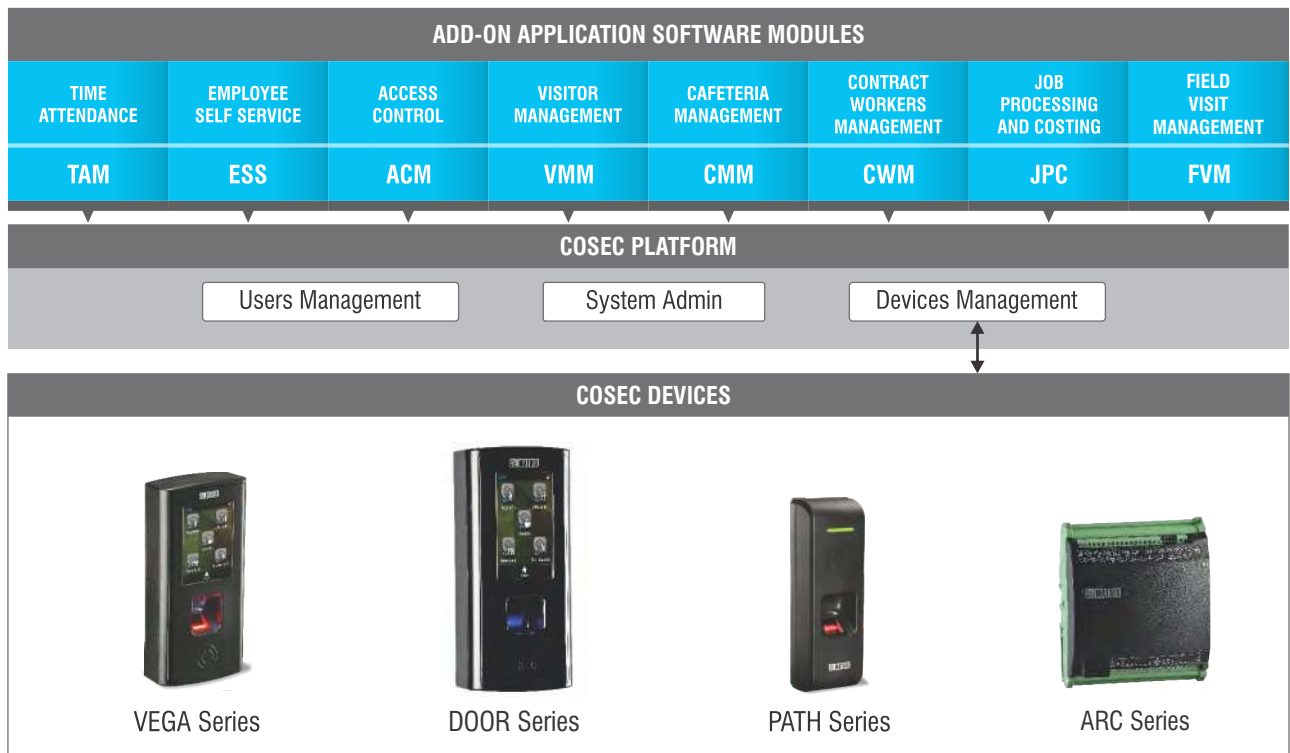
- Scalable and Modular Architecture to Meet Future Requirements
- Flexible and Configurable to Match Organizations' Exact Needs



### PROVEN SOLUTION IN ENTERPRISES

- 600+ Satisfied Large Enterprise Customers
- Over Three Million Users on 20,000+ Devices
- Installations Across the Globe - 25+ Countries

## MATRIX COSEC SOLUTION OVERVIEW



Matrix COSEC is an enterprise grade People Mobility Management solution for organizations, covering Time-Attendance, Employee Self Service, Access Control, Visitor Management, Cafeteria Management, Contract Workers Management, Job Processing and Costing and Field Visit Management. Matrix COSEC is an all-integrated solution including hardware devices, software platform and a suite of software application modules.

Matrix COSEC is a flexible, modular and scalable solution designed for large, medium and small enterprises encompassing up to one million users and 65,000 entry points, scattered across 1,000 locations.

Matrix COSEC provides customers with an option of choosing between an on-premise solution and a cloud solution.

## COSEC CENTRA:

Matrix COSEC CENTRA is an enterprise grade, web enabled on-premise application server, which controls and manages the entire system from anywhere in the world, at any time. COSEC CENTRA is the heart of the entire COSEC solution and acts as a bridge between applications and the devices.



ON-PREMISE WITH  
**COSEC CENTRA**

## COSEC VYOM:

Matrix COSEC VYOM is a cloud based application server, which controls and manages multiple devices and users from anywhere. COSEC VYOM provides the flexibility to customers by minimizing the additional operational and capital cost required for maintenance.



ON CLOUD WITH  
**COSEC VYOM**

## SOFTWARE SOLUTIONS

### COSEC PLATFORM

COSEC Application Server comes with the option of either opting for on-premise solution with COSEC CENTRA or cloud based solution with COSEC VYOM. COSEC PLATFORM is the heart of the entire COSEC solution. In addition to managing an organization, users and devices data, the PLATFORM acts as a bridge between applications and the devices. On the devices side, it facilitates configuration of devices and communicates with site controllers (COSEC PANEL LITE) and door controllers to exchange events and commands and display them live on the monitor screen. On the applications side, the PLATFORM supports enrolling new users and manages organizations and users. Thus, PLATFORM is the foundation for Matrix COSEC applications like Time-Attendance, Access Control, Visitor Management, Cafeteria Management, and others. Developers can build these applications keeping in mind the customer requirements, local news, language and GUI.

In addition to working with Matrix's native applications, COSEC PLATFORM is designed to work seamlessly with third party applications as well. It provides API functions for developing applications such as Time-Attendance, Visitor Management,

Access Control, etc. This layered architecture protects developers from a lower level and tedious tasks such as hardware management, device configuration and real-time communication.

- Web based Application Software
- Centralized Management
- MS SQL or Oracle Database
- Automatic Fingerprint Distribution
- Real-time Monitoring of Devices
- Auto Device Identification
- Modular and Scalable Architecture
- Crystal Reports
- Easy Backup and Restore
- PLATFORM API for Third Party Software Development

### ADD-ON APPLICATION SOFTWARE MODULES

Matrix COSEC offers a range of business Applications such as Time-Attendance, Employee Self Service, Access Control, Visitor Management, Cafeteria Management, Contract Workers Management, Job Processing and Costing and Field Visit

Management. These feature-rich and flexible applications are designed after careful research to meet diverse and complex needs of modern enterprises.

### TIME-ATTENDANCE (TAM)



Matrix COSEC Time-Attendance is an enterprise grade solution for multi-location organizations having complex time-attendance needs. It automates all time-attendance and leave management processes right from recording entries and exits up to report generation and salary processing.

- Late-in/Early-out Policy
- Compensatory Off (C-OFF) Policy
- Overtime Policy and Authorization
- Absenteeism Policy
- Shifts and Schedules
- Automatic Shift Correction
- Holidays and Restricted Holidays
- Manual Entry and Corrections
- Attendance Summary
- Attendance Notifications
- Leave Management
- 200+ Reports and Charts



## EMPLOYEE SELF-SERVICE (ESS)



Matrix COSEC ESS is a comprehensive web-based portal that allows COSEC users to monitor and manage all their time-attendance and leave options. Employees and managers can access all employees' time-attendance information and perform related tasks intuitively saving a significant amount of time they spend on such issues.

- Mark Attendance
- Check Attendance and Leave Status
- Shift Schedules
- Attendance Correction
- Leave Application and Approval
- Cafeteria Details
- Message Board
- Visitor Pre-registration
- Reporting Officer Self Service
- Add/Edit Personal Details
- Dashboard

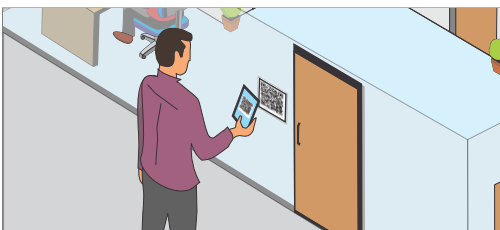
## ACCESS CONTROL (ACM)



Matrix COSEC ACM is a comprehensive and flexible Access Control solution to meet access control needs of organizations, irrespective of their size, layout, locations and timings. Matrix COSEC allows controlling access on three dimensions simultaneously – user, zone and time, by answering three fundamental questions about who, where and when. In addition, a range of value-added features like Anti-pass back, 2-Person rule, First-in User, Blocked Users, Door Auto Re-lock, Guard Tour, Man-Trap and Smart Card based Identification ensure foolproof security of physical assets and safety of manpower.

- Time, User and Zone based Access
- Home Zone and Visit Zone
- VIP Access
- First-In User
- 2-Person Rule
- Man-trap and Guard Tour
- Door Auto Re-lock
- Dead-man Zone
- Anti-pass Back
- Do Not Disturb Zone
- Route based Access
- Occupancy Control
- Smart Identification
- Blocked Users
- Time Stamping
- Who's In

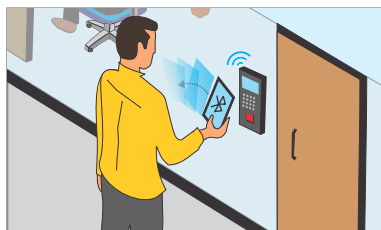
## MOBILE BASED ACCESS CONTROL – YOUR MOBILE IS YOUR IDENTITY



### QR CODE BASED ACCESS CONTROL

Matrix “Your Mobile is Your Identity” technology offers QR Code based Identification of users to mark their attendance and open doors by simply scanning the QR code from their registered mobile phones.

- Scan QR Code for Identity
- Mobile as User's Credential
- Contactless Identification
- Server Encrypted QR Code
- Customer Created QR Codes
- 24 bit Encryption for Mobile to Server Communication



### BLUETOOTH BASED ACCESS CONTROL

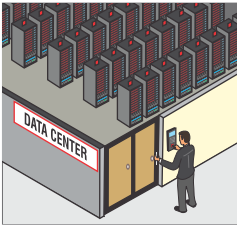
Matrix “Your Mobile is Your Identity” technology offers gesture based identification of users and marks their attendance and opens doors just by twisting of their mobiles in the vicinity of the entry or exit point.

- Twist Mobile to Identify
- Mobile as User's Credential
- Contactless Identification
- Process Multiple Users Simultaneously
- Eliminate RFID Cards
- Encrypted Communication
- Beacon Enabled Functionality with Range Up to 10 Meters
- Add Multiple Beacons with Single COSEC Door Controller to Track Location

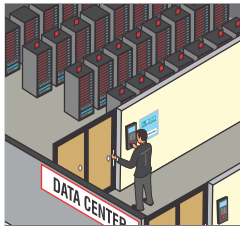


## ACCESS CONTROL FOR DATA CENTRES

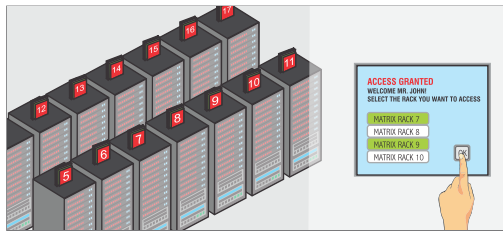
Data Centre Authentication



Rack Authentication



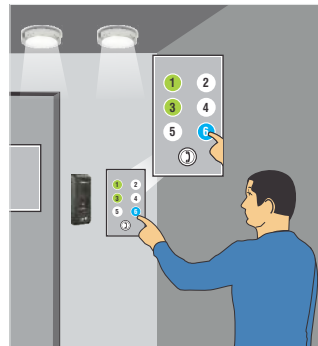
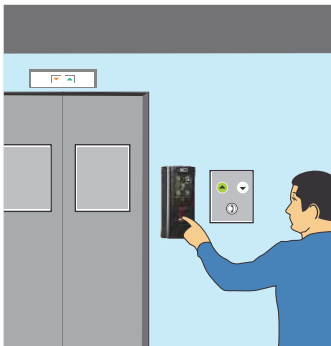
Rack Selection



The success of any data center depends on how securely it manages sensitive data of multiple clients. Hence, it is very crucial for the data centers to prevent any unauthorized access in data center and rack. Using Matrix solution, data racks are secured biometrically, with records of every access along with its duration. Only an authorized person can access specific racks for the stipulated time using biometric verification.

- Centralized Biometric Authentication to Data Centers and Data Racks
- Pre-defined Rack Access
- Integration with Video Surveillance
- SMS/E-mail Notifications
- Alarm on Door Abnormal
- Central Monitoring through E-map
- Door Status Monitoring

## ELEVATOR ACCESS CONTROL



Matrix offers Elevator based Access Control, which allows access and entry in the elevator using biometric or RFID Card credential, only to authorized personnel, at allotted time and assigned floors.

- Controlled Access for 64 Floors in One Elevator Access Control
- Integration of IO Controller with Elevator
- Punch on Matrix Biometric or RFID Device for Verification
- Access only to the Defined Floor
- Ideal for Hotels, Corporate Towers and Residential Buildings

## VISITOR MANAGEMENT



Matrix COSEC Visitor Management is designed to automate visitor management process in a professional and systematic method without compromising on security, safety, hospitality and productivity. It automates the entire process, right from planning and registering a visitor to the end of their visit.

- Visitor Pre-registration
- Visitor Pass creation
- Notifications
- Visitor Access
- Visitor Escort
- Visitor Dashboard
- Frequent Visitors
- Material Tracking
- Visitor Reports

## CAFETERIA MANAGEMENT



Matrix COSEC Cafeteria Management application is a solution that automates the process starting from placing an order to delivery and payment. It tracks items, expedites transactions and reduces food wastage along with preventing accounting errors.

- Customizable Menu
- Menu Schedule
- Auto-selection of Item
- Cashless Transactions
- Refund Requests
- Balance Recharge
- Food Planning
- Blocked Users
- Consumption Status
- Export Data to Payroll and Billing Software
- Informative Reports

## COSEC MIRROR



\* Available Only with Android Devices 

COSEC MIRROR is an App that allows a user to select menu items from any android device (TV, Tablets) instead of a door controller. The app will display the same UI present in the door controller for cafeteria management. User may first select items from the device and then punch on a biometric device.

- Easy Interpretation of Cafeteria Management
- Selection of Items with One Click through Tablet
- Prevents Queue and Reduces Cafeteria Transaction Time

## CONTRACT WORKERS MANAGEMENT (CWM)



Matrix COSEC Contract Workers Management solution is specifically designed for organizations dependent on contract workers. COSEC CWM allows managers and contractors to plan and manage their workforce efficiently to improve productivity and significantly reduce labor cost. Organizations can create and define work orders and assign them to contractors, along with completion dates. Contractors can manage workers' details and attendance from the COSEC web portal.

- Worker Master Creation
- Work Order Generation
- Monitor Task Completion Status
- Worker Database
- Work Hours Calculation
- Shift Generation
- Web based Dashboard
- Report Generation
- Export to Third Party Applications
- Labor Enrolment
- Web based Dashboard
- Report Generation
- Labor Enrolment
- Labor Pass Creation

## JOB PROCESSING AND COSTING (JPC)



COSEC Job Processing and Costing application is a web based solution for organizations working on various projects. This solution allows organizations to track and control project cost and progress very efficiently. Organizations can also monitor user-wise time spent on each job and generate project cost reports using various filters.

- Job and Project Process Monitoring
- User/Device -wise Job Assignment
- Central Monitoring
- Inclusion of Independent Jobs
- Job Hours based Payment Policies
- Site Mapping
- Reports



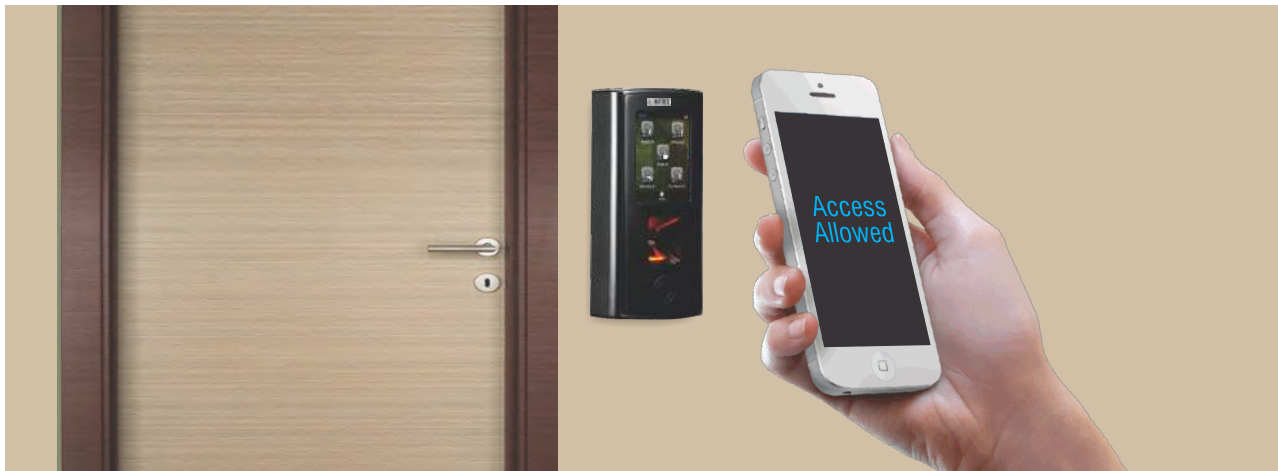
## FIELD VISIT MANAGEMENT (FVM)



COSEC Field Visit Management is an easy tool to manage organizations having employees deployed in the field from a centrally located personnel. The software provides live tracking of field employee schedules via reports with real-time notifications on exceptions. Admin may set day-to-day work schedules and track the movement of field employees.

- Create Schedules of Individual Users
- Assignment of Daily Work Tasks
- View Field Visit Status
- Live Tracking of Schedule Status via Reports
- SMS and E-mail Notifications on Exception

## COSEC APTA



Matrix COSEC APTA is a comprehensive mobile based employee portal offering COSEC users to monitor and manage all their time-attendance, leave and access control options. Employees and managers can access all their time-attendance information easily and perform related tasks remotely reducing a significant amount of time they spent on these issues.



QR Code based  
Access Control



Bluetooth based  
Access Control



Location Tracking  
through GPS



Attendance on  
Move



Visitor Pre-registration



Cafeteria Management



Leave and Tour  
Application



Attendance Correction



Virtual ID Card



### FEATURES:

FOR EMPLOYEES
View Attendance and Leave Details
Mark Attendance
View Shifts and Schedules
Pre-Registration of Visitors
View Cafeteria Details
Apply for Leave/Tour
Apply for Attendance Correction
Edit Personal Information

FOR REPORTING OFFICERS
Approve Leave/Tour Request
Approve Visitor
Pre-Registration of Visitors
Authorize Attendance
Plan Shifts and Schedules
View Team Attendance

## COSEC FACE RECOGNITION



Matrix COSEC MODE Application supports Face Recognition, based on innovative, deep learning technology, which evolves as per regular user interaction in different conditions and identifies a user quickly and accurately. The technology checks face features with 99.53% accuracy. It accepts the user's mobile as a credential, which eliminates hardware cost and makes the verification process simple and secure.

- Reads User Face through Mobile/Tablet
- Deep Learning Technology
- Identification in <1 Sec
- Contactless Authentication
- Eliminates Reader Cost
- 1:1 and 1: N Method
- Time-Attendance and Access Control

## COSEC CENTRA - On-premise People Mobility Management Solutions

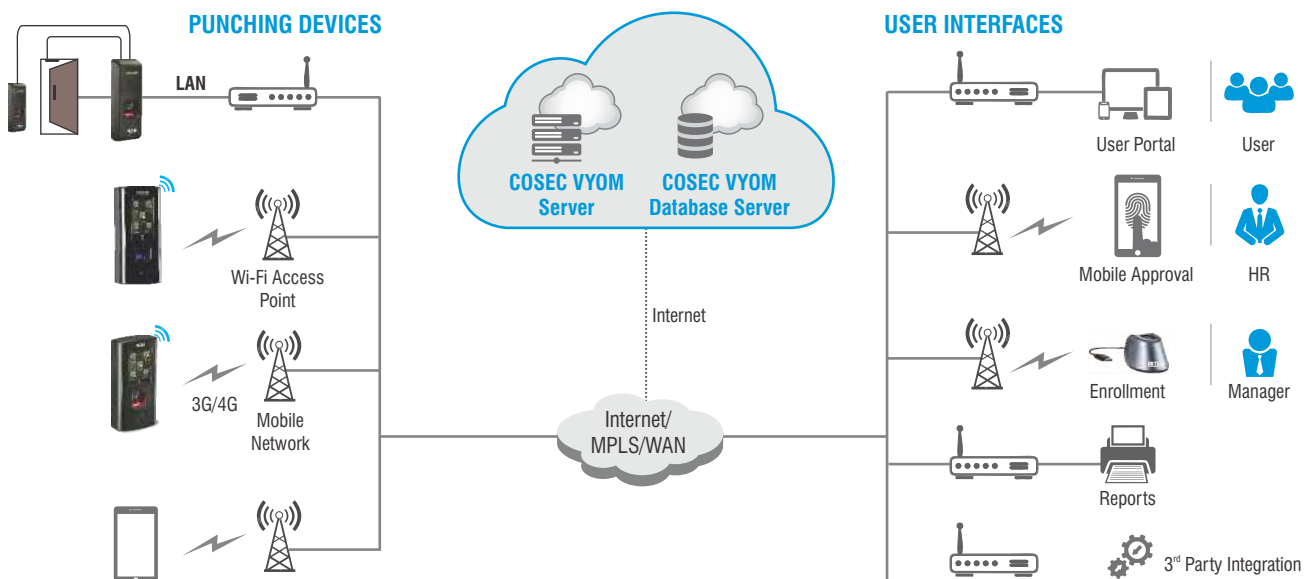
Matrix COSEC CENTRA is an enterprise grade, web enabled on-premise application server, which controls and manages the entire system from anywhere in the world, at any time. Matrix COSEC CENTRA is available based on User Count, targeted at different business segments. These user-based license comes with flexibility to add software module-wise users as per your current requirement and can be expanded in future depending on the organizational requirements. Its scalability option allows users to expand the system from 10 users to 1 million users.

Add-on Software Module Users	Add-on Software Module Users as per Requirement								
	COSEC TAM	COSEC ESS	COSEC ACM	COSEC CMM	COSEC VMM	COSEC CWM	COSEC JPC	COSEC FVM	
	10	10	10	10	10	10	10	10	
	100	100	100	100	100	100	100	100	
	1000	1000	1000	1000	1000	1000	1000	1000	
Platform License Users	Add Platform Users on Base Platform								
	COSEC PLT	USERS MANAGEMENT							
	10	SYSTEM ADMIN							
	100	DEVICES MANAGEMENT							
	1000								
Base Platform	One Time Base Platform License for COSEC CENTRA Application								
	PLT	TAM	ESS	ACM	CMM	VMM	CWM	JPC	FVM
	10	5	5	5	5	1	5	5	5

## COSEC VYOM - Cloud based People Mobility Management Solutions

COSEC VYOM is a People Mobility Management solution based on cloud technology that allows users to use application, hardware, and infrastructure as a service. Cloud based time and attendance system addresses solutions to the outlined issues of flexibility, scalability, and efficiency by providing ubiquitous, cost-effective, secure, and on-demand network access.

Smartly designed COSEC VYOM helps different sized businesses achieve more productivity and security. It is a modern age solution providing opportunities to use Software, Data, and Services over the internet from any location on any internet enabled device. With support for one million users and 65,000 entry points, COSEC VYOM is a scalable cloud based time clocking system.



## BENEFITS:



**SCALABILITY:** COSEC VYOM is an emerging next generation technology solution for complex organizations having multiple branches spread across geographic regions operating in different time zones.

- Access from Anywhere, Anytime
- On-demand Scalability in Sync with Organization Size
- One Million Users and 65,000 Doors



**INTUITIVE:** Managers/Supervisors/Employees can leverage the benefits of Time-Attendance and Access Control solution with any internet enabled device(s) such as PCs, Macs, Tablets, and Smartphones, from anywhere.

- Tablets and Smartphones, from Anywhere
- Real-time Events and Updates
- Easy Access through any Internet Enabled Device



**INCREASED PRODUCTIVITY:** COSEC VYOM automates all Time-Attendance and Leave Management processes right from recording entries to report generation. COSEC VYOM is a cloud based Time-Attendance solution that offers superlative range of suppleness in attendance policies, integration and report generation.

- 99.5% Uptime
- Reduced IT Workload and Resources
- Third Party Integration



**ENHANCED SECURITY:** With advanced access control features, COSEC VYOM provides solution to protect organizations' assets and power by controlling users' entry based on their credential(s).

- Multi-level Data Encryption and Protection
- Backup, Archival, Retrieval, and Migration
- Access Control for Data Centers and Elevators



**FLEXIBILITY:** COSEC VYOM provides flexibility in terms of different wired and wireless connectivity options to satisfy Time-Attendance and Access Control policies of real-world enterprises.

- Unlimited Attendance and Leave Policies
- On-the-Fly Adding Applications
- Multiple Credentials Including Mobile



**COST-EFFECTIVE:** With no initial investment, COSEC VYOM promises achieving more with minimum resources. COSEC VYOM reduces cost of assets needed in the form of hardware, software, and network devices.

- No Capex, Maintenance and Upgrades for IT
- Pay as Per Usage Days
- Free Remote Support



**EASY INTEGRATION:** It provides flexibility to export attendance data by seamless integration with third party payroll system. To secure your premises, COSEC VYOM allows easy integration with third party hardware such as Video Surveillance, Turnstile, Boom Barrier, Tripod, and more.

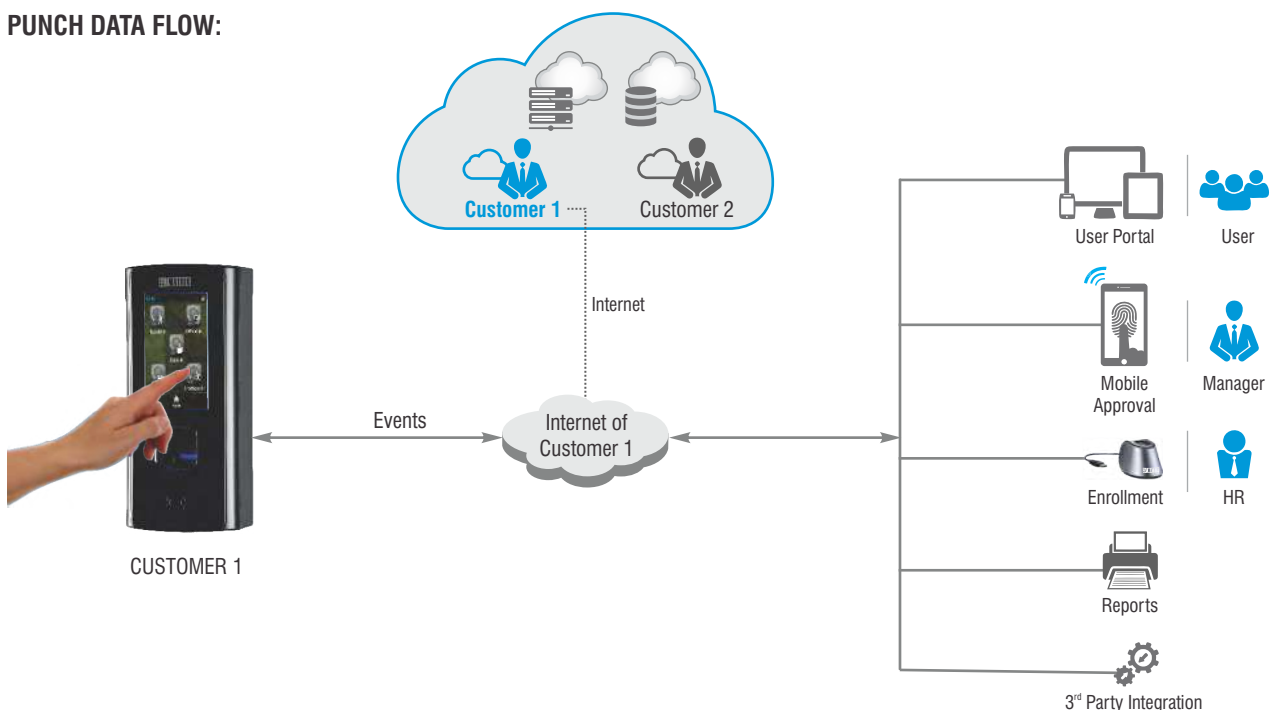
- Through APIs
- Database to Database
- Offline Export
- Aux-In and Aux-Out Ports



**EASE OF USE:** COSEC VYOM provides ease of use as it eliminates complexities of maintaining the server or storing the data at your place.

- Quick Deployment and Support
- No Software Installation
- 24 x 7 Support

## PUNCH DATA FLOW:



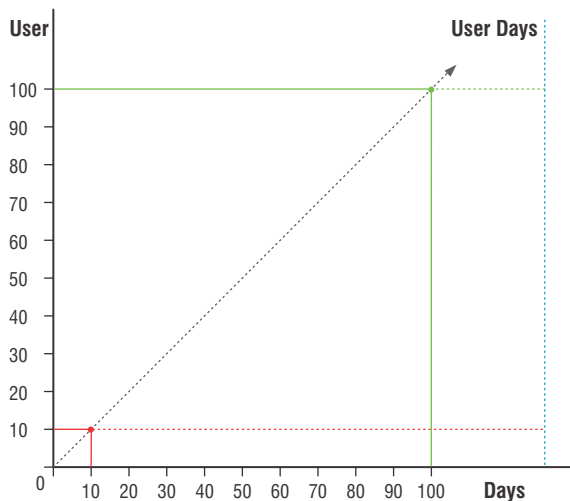
## BUSINESS MODEL:

COSEC VYOM is a cloud based Time-Attendance software that works on pay as per usage model.

It provides ready to go solution with pay only for what you use and scale up as you need. Based on subscription model, COSEC VYOM

allows flexibility of activating top-up as and when required. It works on "Spend to Save" approach by offering a priceless solution on an investment of small price.

Unit for COSEC VYOM is User Days.



**User Days** = Number of Users × Number of Days

## COSEC CENTRA V/S COSEC VYOM

FACTORS	COSEC CENTRA	COSEC VYOM
Deployment	Web	Cloud
Server Cost	Yes	No
Software Installation	Required	Not Required
Hardware	Purchase	Purchase/Rent
Maintenance Cost	Required	Not Required
Upgrade Charges	Required	Not Required
IP Address	Yes	No
Security	Customer Managed	Matrix Managed

## CUSTOMER DASHBOARD:

**MATRIX COSEC VYOM**

License Voucher Activation  
User Days Balance View  
Usage Report

Tenant\* 2 Bhavik Jadav

License Voucher\*

User Days\*

Product\* --Select--

Add Cancel

License Voucher	Product	User Days
No Data		

Activate

Current Balance

As on Date: 27/07/2017

Platform: 999999	VMM: 0
TAM: 999999	CMM: 0
ACM: 999999	JPC: 0
FVM: 999999	ESS: 0
CWM: 0	

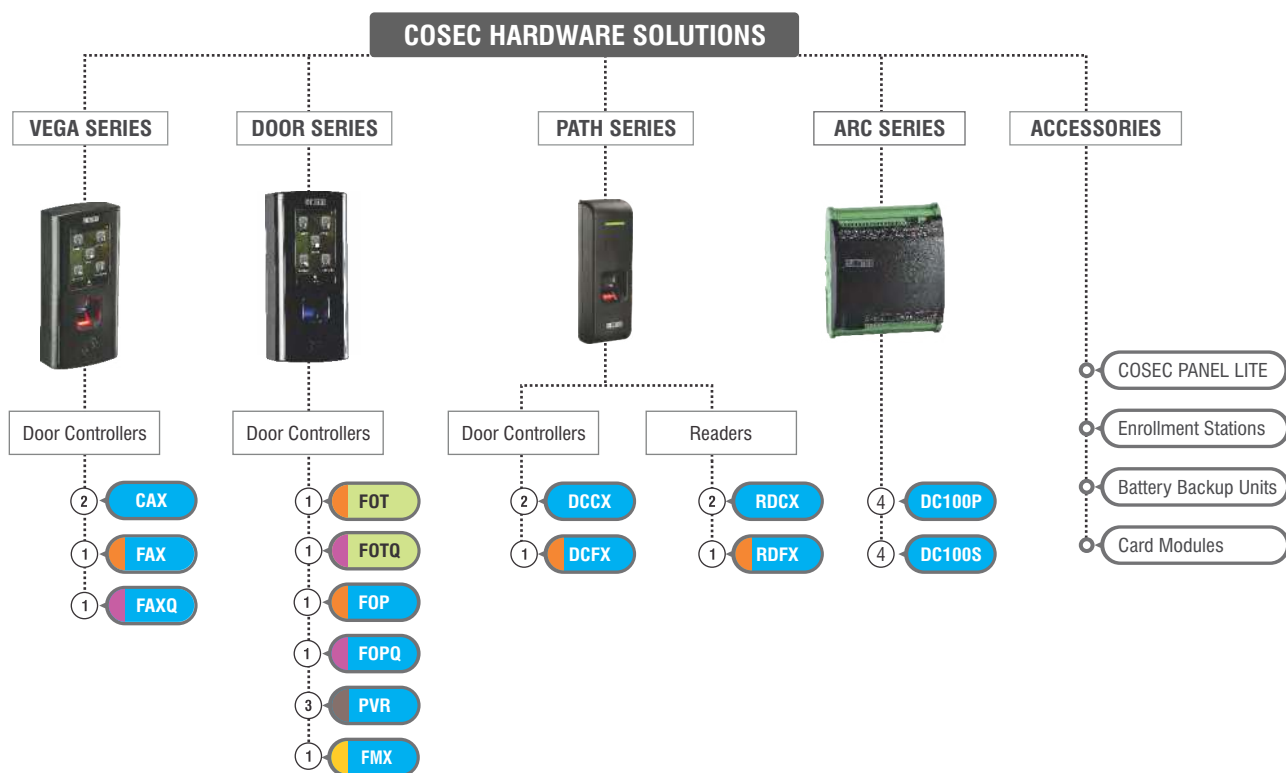
## CUSTOMER CONSUMPTION REPORT:

Matrix ComSec Pvt Ltd.									
Tenant Usage Report From 01-Jul-2017 To 03-Jul-2017									
Run by: ABC Corp Ltd.					Page 1 of 1				
					Date: 05-Jul-2017				
<div> <div>Tenant: ABC Corp Ltd.</div> <div>Address: Makarpura GIDC, Vadodara</div> <div>City: Vadodara</div> </div>									
Date	PLATFORM	TAM	ACM	FVM	CWM	VMM	CMM	JPC	ESS
01-Jul-2017	297	297	99	49	29	53	297	97	297
02-Jul-2017	298	298	98	50	30	55	298	99	298
03-Jul-2017	297	297	100	46	26	48	297	100	297
<b>TOTAL:</b>	<b>892</b>	<b>892</b>	<b>297</b>	<b>145</b>	<b>85</b>	<b>156</b>	<b>892</b>	<b>296</b>	<b>892</b>



## COSEC HARDWARE SOLUTIONS

Matrix COSEC hardware solutions comprise of families of door controllers, readers and accessories. These products have won many international awards for their aesthetics and engineering. They are specifically designed for demanding enterprise applications using cutting-edge technologies and components for reliable performance for years.



Only Time-Attendance  
Access Control and Time-Attendance

Suprema Optical Sensor  
Multispectral Fingerprint Sensor  
Fujitsu Palm Vein Contactless Sensor  
With STQC Certified Sensor

① Fingerprint and RFID Support  
② Only RFID Support  
③ Palm Vein Support  
④ Two Door Controller

**Types of Card:**  
X - E, M, I Card Support,  
E - EM Prox,  
M - Mifare Smart,  
I - HID iCLASS

## COSEC DOOR CONTROLLERS

COSEC door controllers are the front-end terminals that people use during entry and exit. Door controllers read biometric credentials – palm vein, fingerprint, or RFID cards to log each entry/exit and control door locking. Door controllers are connected with the COSEC server or site controller. They store all user access information and send entry/exit details to the COSEC server in real-time. Door controllers can monitor and control additional readers, door locks, and auxiliary input and output ports. The COSEC door controllers are divided into five series as mentioned below:

### COSEC VEGA



VEGA series door controllers are engineered with careful blend of aesthetics, size, connectivity, reliability, and ease of use for modern enterprises. The VEGA devices are a perfect fit for Access Control and Time-Attendance solution required by modern organizations.

- Optical Fingerprint Reader
- Smartcards and Proximity Cards
- 3.5" Touch Sense Color LCD
- IP65 for Outdoor Applications
- Power over Ethernet (PoE)
- Ethernet, Wi-Fi and 3G/4G/LTE
- 500,000 Events Storage
- COSEC VEGA FAXQ is Available with STQC Certified Sensor

## COSEC DOOR



### COSEC DOOR PVR

COSEC DOOR PVR is a contactless technology that reads internal vascular pattern of the user palm and give accurate results to provide utmost security and hygiene. These patterns are unique to each individual and exists underneath the skin layer so they cannot be forged, thereby making it more secure than any other biometric technology.

- Contactless Reader
- Palm Vein, RFID and PIN Credentials
- 20,000 User Templates
- 100,000 Event Storage
- Ethernet, Wi-Fi and 3G/4G/LTE
- Detachable Hand Guide for COSEC DOOR PVR
- Standard Matrix Hand Guide for COSEC DOOR PVR ES

### COSEC DOOR FMX

COSEC DOOR FMX makes use of advance multispectral fingerprint sensor. It reads surface and subsurface of a finger and gives very clear and strong image. Furthermore, it reads subsurface layer even if the surface layer is not readable due to finger being dirty, dry, or oily, having poor ridge image, or other environmental problems. This unique identification process outperforms all other fingerprint sensors and offers robust and reliable biometric information of the user.

- Multispectral Fingerprint Reader
- Fingerprint and RFID card
- Interactive GUI with 4.3" TFT Touch Screen
- 500,000 Transactions and 50,000 Users
- PoE, Ethernet, Wi-Fi, and 3G/4G (on USB)



### COSEC DOOR FOP, COSEC DOOR FOT

Winner of the coveted iF award for its superior design, DOOR series controllers are versatile devices designed for reliability, modularity, and performance. These workhorses come in multiple variants specifically targeted at Time-Attendance and Access Control applications.

- Optical Fingerprint Reader
- Smart Card and Proximity Cards
- 128\*64 Dot Matrix Display
- Touch Sense Keypad
- Ethernet, 3G/4G/LTE and USB Port
- 500,000 Event Storage
- COSEC DOOR FOPQ and COSEC DOOR FOTQ are Available with STQC Certified Sensor



## COSEC PATH

Compact, robust and cost-effective PATH series door controllers blend in with any modern building architecture and design. These devices assure reliable and long term performance as sentries at the building gates and doors for Access Control application.

- Optical Fingerprint Reader
- Smartcards and Proximity Cards
- IP65 for Outdoor Applications
- Power over Ethernet (PoE)
- Power to Door Lock over PoE
- Elegant and Compact
- 9,600 Fingerprint Storage
- 50,000 Events Storage



## COSEC ARC

COSEC ARC is an intelligent compact panel with PoE for two doors. The futuristic COSEC ARC can control two readers on Wiegand or RS-485, door lock and other auxiliary devices making it an ideal solution for any access control installation.

- Two Door Panel with PoE
- Two Readers on Wiegand or RS-485
- PoE for Readers and Door Lock
- Connect Door Lock/Exit Switch individually for each Door
- Up to 10,000 Users and 100,000 Events
- Din Rail and Box Mounting





## COSEC ARC IO800

COSEC ARC IO800 is an input and output controller to control multiple inputs and outputs of third party devices to perform multiple applications.

- Eight Input Ports with Four State Supervised Inputs
- Eight Output Ports with Form C Dry Contact Relays
- Power over Ethernet (PoE)
- Ethernet and/or RS-485 Connectivity
- Elevator Control
- LED Indication for Device and Network Status Respectively

## COSEC DOOR CONTROLLERS SELECTION GUIDE

SERIES	VEGA			DOOR						PATH	
MODEL	FAX	CAX	FAXQ	PVR	FMX	FOP	FOT	FOPQ	FOTQ	DCFX	DCCX
Fingerprint Sensor (Optical)	•					•	•			•	
Fingerprint Sensor (Multispectral)					•						
Fingerprint Sensor (STQC Certified)			•					•	•		
Palm Vein Sensor				•							
RFID Card Reader	•	•	•	•	•	•	•	•	•	•	•
Touch Screen LCD (4.3")					•						
Touch Screen LCD (3.5")	•	•	•								
128*64 Dot Matrix Display				•		•	•	•	•		
Touch Sense Keys				•		•	•	•	•		
Ethernet	•	•	•	•	•	•	•	•	•	•	•
RS-485						•				•	•
USB Port for Data Transfer	•	•	•	•	•	•	•	•	•		
USB Port for Communication	•	•	•	•	•	•	•	•	•		
Built-in Wi-Fi	•	•	•	•	•	•	•	•	•		
Power over Ethernet (PoE)	•	•	•		•					•	•
Event Storage (50,000)										•	•
Event Storage (100,000)				•							
Event Storage (500,000)	•	•	•		•	•	•	•	•		
External Reader	•	•	•	•	•	•		•		•	•
Exit Switch	•	•	•	•	•	•		•		•	•
Door Lock	•	•	•	•	•	•		•		•	•
Auxiliary Input Port	•	•	•	•	•	•		•			
Auxiliary Output Port	•	•	•	•	•	•		•			
Tamper Detection	•	•	•	•	•	•	•	•	•	•	•
Buzzer	•	•	•	•	•	•	•	•	•	•	•
LED Indication				•		•	•	•	•	•	•
IP65	•	•	•							•	•

- Built-in
- COSEC CPM is Required
- External Wi-Fi Dongle Required

X-E, M, I Card Support   E- EM Prox   M-Mifare Smart   I- HID iCLASS

## COSEC EXIT READERS



Matrix COSEC Exit Readers are used with COSEC door controllers to monitor user exits. They come in two variants - Fingerprint based and Card based. Elegant design and IP65 make them suitable for use in demanding environments.

- Fingerprint and Card based
- Tri Color LED
- Tamper Detection
- IP65 for Outdoor Usage
- RS-232 and RS-485 Interface
- Buzzer

## ACCESS CONTROL PANEL



### COSEC PANEL LITE

COSEC PANEL LITE manages multiple controllers and acts as a bridge between the controllers and the central COSEC server. They are responsible for synchronizing all door controllers and implementing advanced access control features.

- Ethernet and RS-485
- USB for Wi-Fi, 3G/4G/LTE and Data Transfer
- Auxiliary Input and Output Ports
- Advance Access Control Features
- 500,000 Events Storage
- Controls 255 Doors and 25,000 Users
- Trap Messages - Door, Alarm & System Events
- Elevator Access Control

COSEC PANEL LITE		
USE	STANDALONE MODE	NETWORK MODE
For	SMB, SME and SOHO	Enterprises and SME
Location	Single Location	Multiple Locations with COSEC Server
Software	Built-in with COSEC PANEL LITE	Web based with COSEC Server
Capacity	Connect up to 255 Doors with COSEC PANEL LITE	Connect up to 65,000 Doors with COSEC Server
Users	25,000 Users with COSEC PANEL LITE	One Million Users with COSEC Server

## COSEC ACCESSORIES



### COSEC ENROLL

COSEC ENROLL is a desktop based enrolment station to enroll palm and fingerprint from a single location. COSEC ENROLL, along with the enrolment software, allows HR to enroll new employees in a simple manner.

- Palm Vein Enrolment Station
- Optical Fingerprint Enrolment Station
- Multispectral Fingerprint Enrolment Station
- Fingerprint Verification
- Comprehensive Software
- Finger Image Quality Check during Enrolment

### COSEC CPM

COSEC CPMs are pluggable card reader modules inserted in the COSEC DOOR and VEGA series controllers. Six different card reader modules are available to support both proximity and smart cards.

#### Cards Support:

High Frequency (13.56 MHz): MIFARE 1k, MIFARE 4k, HID iCLASS 2k/2, HID iCLASS 16k/2, HID iCLASS 16k/16

Low Frequency (125 KHz): EM Prox





PRODUCT	TECHNOLOGY	SUPPORTED DOOR CONTROLLERS
COSEC VEGA CPM EM PROX	Proximity	COSEC VEGA Series
COSEC VEGA CPM MIFARE SMART	Smart Card	COSEC VEGA Series
COSEC VEGA CPM HID iCLASS	Smart Card	COSEC VEGA Series
COSEC CPM EM PROX	Proximity	COSEC DOOR Series
COSEC CPM MIFARE SMART	Smart Card	COSEC DOOR Series
COSEC CPM HID iCLASS	Smart Card	COSEC DOOR Series

## COSEC Battery Backup Units



### COSEC VEGA BBU

It is a power supply battery backup for the COSEC VEGA series door controllers which is useful at remote sites, where connectivity is an issue.



### COSEC PATH BBU

It is a power supply battery backup for COSEC PATH series door controllers which is highly useful for mobile application and remote areas where there is scarcity of connectivity and power.



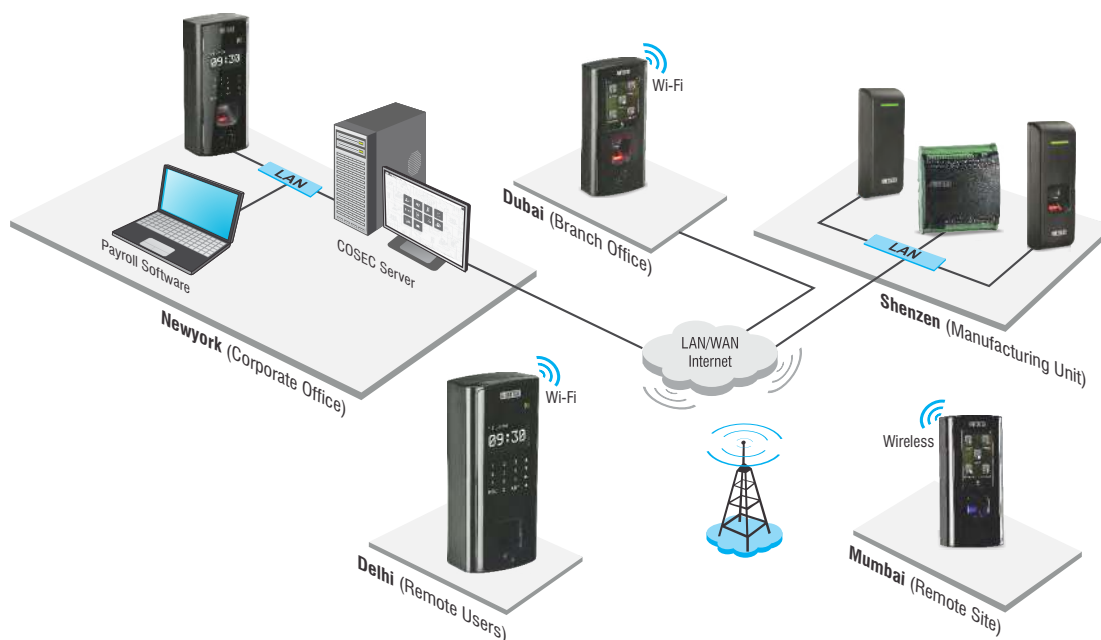
### COSEC PSBB12V

It is a COSEC power supply with battery backup which is used for supplying power to the door controller.

- Supply Power with Battery Backup to Door Controllers
- Power Supply for Door Lock and Exit Readers

## COSEC APPLICATION

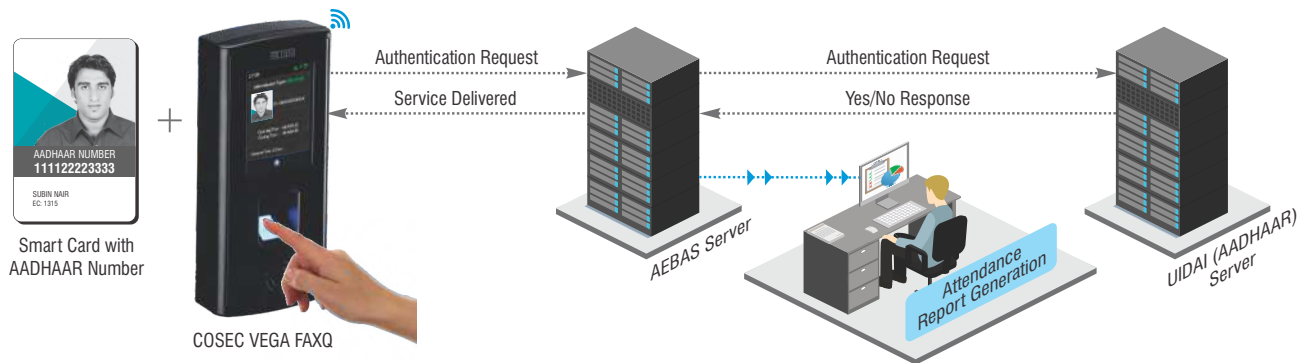
The image below shows COSEC deployment in a large enterprise having a corporate office, manufacturing unit, branch offices and remote sites located at different geographical locations. COSEC server is installed at the corporate office to manage attendance and access control of all employees on a central level. COSEC door controllers installed at these locations are connected with COSEC using available connectivity (VPN, WAN, LAN, Wi-Fi, 3G/4G/LTE). COSEC door controllers record user attendance and control access using biometric or RFID Cards. It sends real-time entry/exit events to the COSEC PLATFORM. COSEC processes these events to generate attendance/leave data and sends the same to payroll/ERP for salary processing.



# AADHAAR ENABLED BIOMETRIC ATTENDANCE SYSTEM

Matrix introduces the first embedded Linux based AADHAAR Enabled Biometric Attendance Device registered on AEBAS Server - COSEC VEGA FAXQ. It authenticates the user using their AADHAAR number stored in the smart card and fingerprint in less than 1.5 sec. This integrated device offers unique benefits in terms of reliability, convenience, speed, and data security. Its IP65 design, smart card, multi-language, PoE, wireless connectivity, and touchscreen makes it a foolproof Time-Attendance solution for Government organizations.

## AUTHENTICATION PROCESS



AEBAS is a system of managing attendance of Indian government employees through AADHAAR authentication. Matrix offers the first embedded Linux based AADHAAR enabled biometric device registered on AEBAS Server - COSEC VEGA FAXQ. It offers unique

advantages in terms of connectivity, technology, usage environment, and ease of use. This device supports fingerprint as well as Mifare smart card as credential. It supports both Hindi as well as English language with auto selectable mode.

## BENEFITS



### RELIABILITY

Designed for Attendance Management on a Linux Platform for Long Term Consistent Performance



### CONVENIENCE

Reads AADHAAR Number from the Smart Card Directly and Eliminates Manual Entry



### SPEED

Identification within 1.5 Seconds



### CONNECTIVITY

LAN with PoE, Wi-Fi, 3G/4G Options to Connect with the AEBAS Server

## KEY FEATURES



### CREDENTIALS

- Fingerprint
- Smart Card



### AUTHENTICATION MODES

- Smart Card + Finger
- Keypad + Finger



### LANGUAGES

- English
- Hindi
- Regional Languages as per Request



### DISPLAY

- 3.5" Touch Screen
- Display User Photo



### CONNECTIVITY

- Ethernet with PoE
- Wi-Fi
- 3G/4G/LTE
- USB



### IP65 CERTIFIED

- Protection from Dust and Liquid

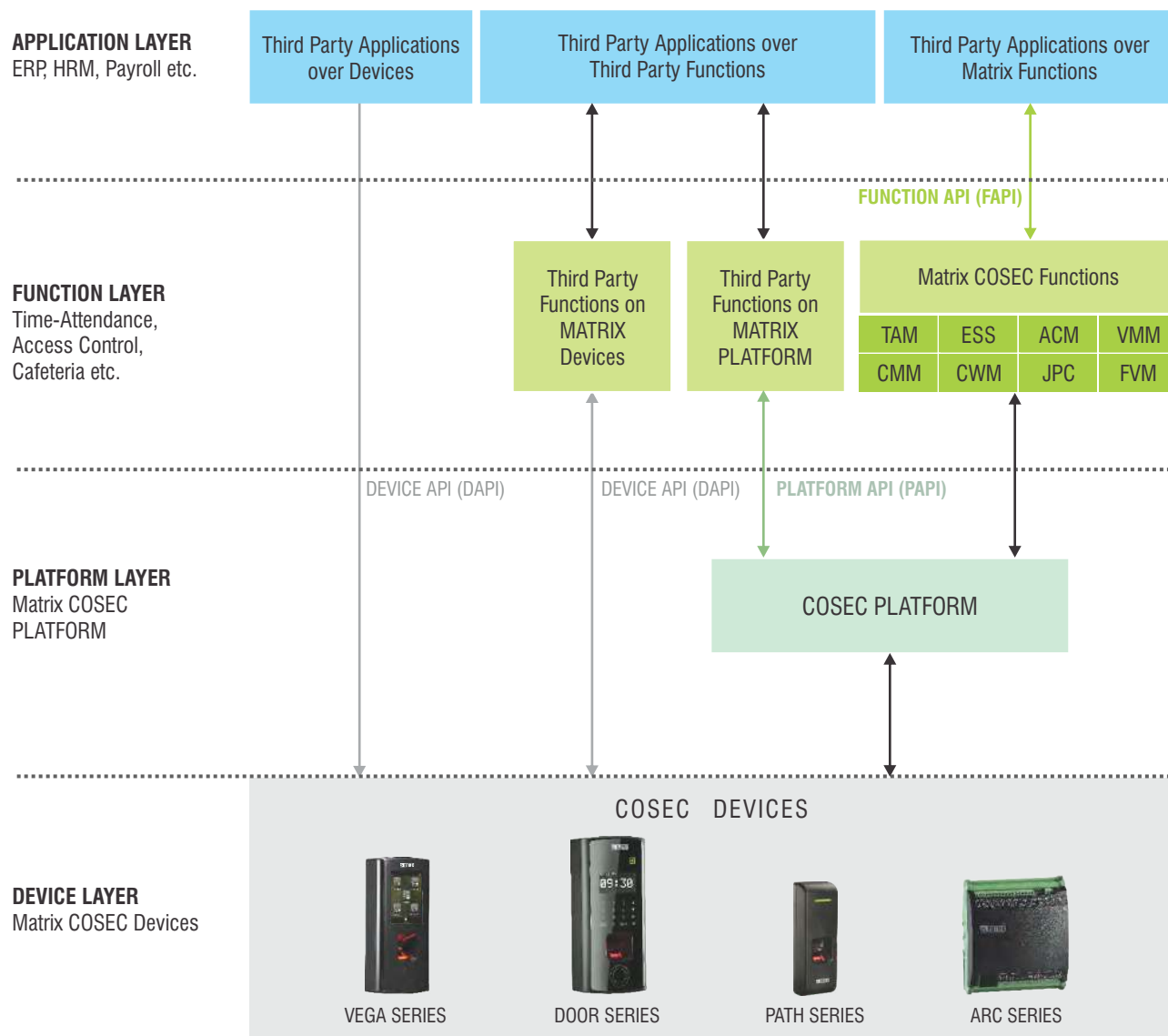


### CERTIFICATIONS

- STQC
- CE
- RoHS
- BIS
- FCC
- IP65

## MATRIX COSEC INTEGRATION

Matrix COSEC is designed in a way that it can be integrated with various third party applications software such as ERP, Payroll, HRM, etc. for salary generation using database to database, API and customized export templates methods. COSEC integration is shown in the image below:



### Device Level Integration

Matrix COSEC devices come ready with Device API for third party application developers, which allow them to develop their applications using Matrix COSEC devices. Matrix COSEC Device APIs (DAPI) allow other third party applications to communicate directly with the COSEC devices without requiring COSEC Server.

### Platform Level Integration

Many application developers need application ready APIs. They expect the hardware vendors to manage device configuration, communication, enrollment, and other lower level tasks. This saves them from the complexity of physical interfaces, network management, communication, device configuration, template distribution, etc. For such developers, Matrix COSEC offers Platform APIs (PAPI). Matrix COSEC manages all the lower level tasks

preventing the application developers from performing the tedious lower level software engineering and offers them application ready interfaces for simple and quick programming. Using PAPI, they can build their applications like Time-Attendance, Access Control, Visitor Management, Cafeteria Management, Contract Workers Management, and others by integrating them with COSEC.

### Function Level Integration

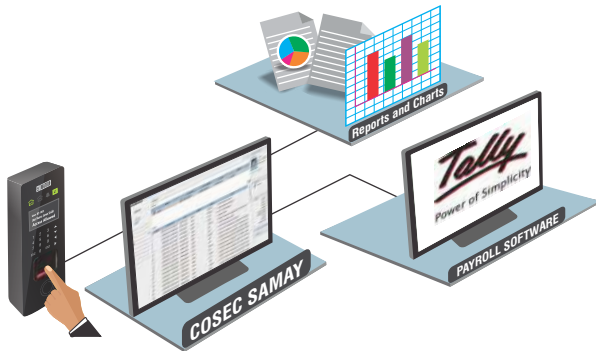
This is the highest level of interface Matrix COSEC offers for application to application integration. Using Function APIs (FAPI), Matrix COSEC functions like Time-Attendance can be integrated with other third party applications such as payroll, ERP, HRMS, and CRM. Matrix COSEC is integrated with many widely popular applications like SAP, Oracle, Microsoft Dynamics NAV/AX, Tally, and others.

## COSEC SAMAY - Time-Attendance for SOHO

Matrix COSEC SAMAY is a professional Time-Attendance solution specially designed for small organizations. COSEC SAMAY manages the diverse requirements of systematic yet flexible timings with user-wise attendance, shifts, and leave policies. Its human-like intelligence calculates attendance and leaves, and integrates seamlessly with payroll systems. Matrix COSEC SAMAY dramatically improves productivity and discipline of the organization.



### SOLUTION DIAGRAM:



### FEATURES:



Desktop based Application



Up to 2 Devices



Up to 100 Users



MS Excel Reports



Tally Integration

### COSEC SAMAY DIFFERENTIATORS:

FEATURES	MATRIX COSEC SAMAY	BENEFITS
User-wise Timings	User-wise Attendance, Late-In, Early-Out-Off and Overtime	Adapt to the Organization's Real Needs
Flexible Shifts	Multiple Shifts and Shift Patterns	Allocate Manpower for Maximum Efficiency
Leaves and Holidays	Various Leave Types, Balance Tracking and Encashment	Match Organization's Exact Leaves and Holidays
Overtime	User-wise Overtime Policy and Automatic Calculation	Save time, Increase Accuracy and Reduce Cost
Online Events Recording	Auto Push Events from device to Software with User Photo	Prevent Human Interventions, Errors and Manipulation
Live Dashboard	Live Status of Attendance, Device, Shifts and Holidays in a Single Window	Monitor Manpower Status for Better Control and Faster Decisions
Reports and Charts	Customized Reports in Excel and Graphical Charts with Filters	Easy Data Interpretation for Quick Decision Making
Payroll Integration	Direct Integration with Tally and other Payroll	Reduce Manual Work and Eliminate Errors/Manipulation
Award Winning Design	iF and Red Dot International Awards for Product Engineering and Aesthetics	Improve Aesthetics and Ease-of-Use
Sturdy Hardware	Gold Flash PCBs, Touch-Sense Keys, Scratch Proof Plastic and Heavy Duty Components	Reliability and Long Life
Multiple Connectivity	Ethernet, Wi-Fi, Mobile Broadband (3G/2G) and Power over Ethernet (PoE)	Reduce Wiring Cost and Improve Network Reliability



## ORDERING INFORMATION

DOOR CONTROLLERS	
COSEC VEGA FAX	Fingerprint and Card based Door Controller with Touchscreen, IP65, Wi-Fi and 3G/4G Connectivity Option
COSEC VEGA CAX	Card based Door Controller with Touchscreen, IP65, Wi-Fi and 3G/4G Connectivity Option
COSEC VEGA FAXQ	STQC Certified Fingerprint Sensor and Card based Door Controller with Touchscreen, IP65, Wi-Fi and 3G/4G Connectivity Option
COSEC DOOR PVR	Palm Vein and Card based Door Controller with Detachable Hand Guide, Wi-Fi, LCD, Keypad and 3G/4G Connectivity Option
COSEC DOOR PVR ES	Palm Vein and Card based Door Controller with External Hand Guide, Wi-Fi LCD, Keypad and 3G/4G Connectivity Option
COSEC DOOR FMX	Multispectral Fingerprint and Card based Door Controller with Touchscreen, Wi-Fi and 3G/4G Connectivity Option
COSEC DOOR FOP	Fingerprint and Card based Door Controller with LCD, Keypad and USB
COSEC DOOR FOPQ	STQC Certified Fingerprint Sensor and Card based Door Controller with LCD, Keypad and USB
COSEC DOOR FOT	Fingerprint and Card based Time-Attendance Terminal with LCD, Keypad and USB
COSEC DOOR FOTQ	STQC Certified Fingerprint Sensor and Card based Time-Attendance Terminal with LCD, Keypad and USB
COSEC PATH DCFX*	Fingerprint and in-Built Card based Door Controller with PoE and IP65
COSEC PATH DCCX*	In-Built Card based Door Controller with PoE and IP65
COSEC ARC DC100P	Two Door Panel with PoE for Access Control Application
COSEC ARC DC100S	Two Door Panel with RS-485 for Access Control Application

READERS	
COSEC PATH RDFX*	Fingerprint and Card based Exit Reader with IP65
COSEC PATH RDCX*	Card based Exit Reader with IP65

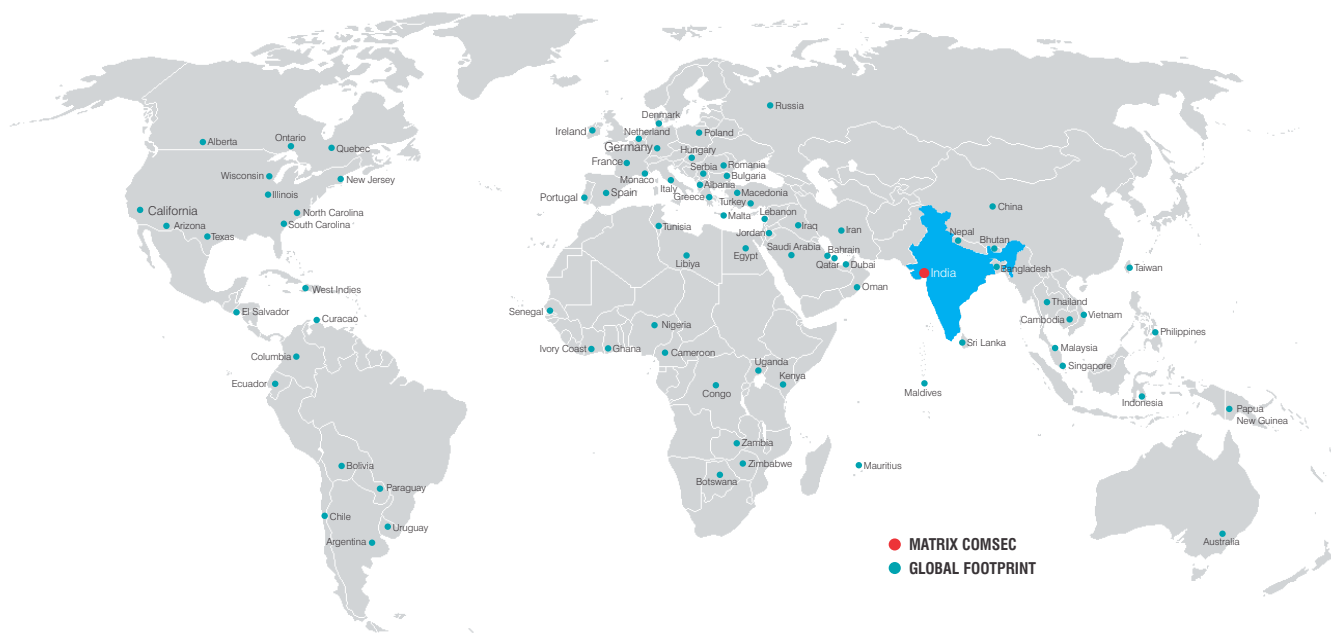
ACCESSORIES	
COSEC PANEL LITE	Control Panel to Support Multiple Door Controllers for Advance Features
COSEC ARC IO800	8 Door input and output controller to control inputs and outputs of third party devices to perform multiple applications.
COSEC ENROLL PALM	USB based Palm Enrolment Station
COSEC ENROLL FINGER	USB based Fingerprint Enrolment Station
COSEC ENROLL FMX	USB based Multispectral Fingerprint Enrolment Station
COSEC PSBB12V	Power Supply Battery Backup for Door Controllers
COSEC PATH BBU	Power Supply Battery Backup for PATH Series Door Controllers
COSEC VEGA BBU	Power Supply Battery Backup for VEGA Series Door Controllers
COSEC VEGA CPM EM PROX	EM Proximity Card Personality Reader Module for VEGA Series Door Controller
COSEC VEGA CPM MIFARE SMART	Mifare Smart Card Personality Reader Module for VEGA Series Door Controller
COSEC VEGA CPM HID iCLASS	HID iCLASS Smart Card Personality Reader Module for VEGA Series Door Controller
COSEC CPM EM PROX	EM Proximity Card Personality Reader Module
COSEC CPM MIFARE SMART	Mifare Smart Card Personality Reader Module
COSEC CPM HID iCLASS	HID iCLASS Smart Card Personality Reader Module

\*X- E, M, I where E-EM Prox M-Mifare Smart I-HID iCLASS

COSEC CENTRA SOFTWARE	
COSEC CENTRA PLATFORM	Base Platform License for COSEC CENTRA
COSEC CENTRA PLT10	10 Platform Users License for COSEC CENTRA
COSEC CENTRA PLT100	100 Platform Users License for COSEC CENTRA
COSEC CENTRA PLT1000	1000 Platform Users License for COSEC CENTRA
COSEC CENTRA TAM10	10 Time - Attendance Users License for COSEC CENTRA
COSEC CENTRA TAM100	100 Time - Attendance Users License for COSEC CENTRA
COSEC CENTRA TAM1000	1000 Time - Attendance Users License for COSEC CENTRA
COSEC CENTRA ACM10	10 Access Control Users License for COSEC CENTRA
COSEC CENTRA ACM100	100 Access Control Users License for COSEC CENTRA
COSEC CENTRA ACM1000	1000 Access Control Users License for COSEC CENTRA
COSEC CENTRA ESS10	10 Employee Self Service Portal Users License for COSEC CENTRA
COSEC CENTRA ESS100	100 Employee Self Service Portal Users License for COSEC CENTRA
COSEC CENTRA ESS1000	1000 Employee Self Service Portal Users License for COSEC CENTRA
COSEC CENTRA CMM10	10 Cafeteria Management Users License for COSEC CENTRA
COSEC CENTRA CMM100	100 Cafeteria Management Users License for COSEC CENTRA
COSEC CENTRA CMM1000	1000 Cafeteria Management Users License for COSEC CENTRA
COSEC CENTRA VMM10	10 Visitor Management Users License for COSEC CENTRA
COSEC CENTRA VMM100	100 Visitor Management Users License for COSEC CENTRA
COSEC CENTRA VMM1000	1000 Visitor Management Users License for COSEC CENTRA
COSEC CENTRA CWM10	10 Contract Workers Management Users License for COSEC CENTRA
COSEC CENTRA CWM100	100 Contract Workers Management Users License for COSEC CENTRA
COSEC CENTRA CWM1000	1000 Contract Workers Management Users License for COSEC CENTRA
COSEC CENTRA JPC10	10 Job Processing and Costing Users License for COSEC CENTRA
COSEC CENTRA JPC100	100 Job Processing and Costing Users License for COSEC CENTRA
COSEC CENTRA JPC1000	1000 Job Processing and Costing Users License for COSEC CENTRA
COSEC CENTRA FVM10	10 Field Visit Management Users License for COSEC CENTRA
COSEC CENTRA FVM100	100 Field Visit Management Users License for COSEC CENTRA
COSEC CENTRA FVM1000	1000 Field Visit Management Users License for COSEC CENTRA
COSEC CENTRA FR10	10 Facial Recognition Users for COSEC CENTRA
COSEC CENTRA FR100	100 Facial Recognition Users for COSEC CENTRA
COSEC CENTRA FR1000	1000 Facial Recognition Users for COSEC CENTRA
COSEC CENTRA AUP10	10 Annual Upgradation license Users for COSEC CENTRA
COSEC CENTRA AUP100	100 Annual Upgradation license Users for COSEC CENTRA
COSEC CENTRA AUP1000	1000 Annual Upgradation license Users for COSEC CENTRA

COSEC VYOM SOFTWARE	
COSEC VYOM TENANT	COSEC VYOM Tenant License
COSEC VYOM PLATFORM UD1K	Application Software Platform for 1,000 User Days for COSEC VYOM
COSEC VYOM TAM UD1K	Time-Attendance for 1,000 User Days
COSEC VYOM ACM UD1K	Access Control for 1,000 User Days
COSEC VYOM ESS UD1K	Employee Self Service for 1,000 User Days
COSEC VYOM VMM UD1K	Visitor Management for 1,000 User Days
COSEC VYOM CMM UD1K	Cafeteria Management for 1,000 User Days
COSEC VYOM JPC UD1K	Job Processing and Costing for 1,000 User Days
COSEC VYOM CWM UD1K	Contract Workers Management for 1,000 User Days
COSEC VYOM FVM UD1K	Field Visit Management for 1,000 User Days
COSEC VYOM PLATFORM UD10K	Application Software Platform for 10,000 User Days for COSEC VYOM
COSEC VYOM TAM UD10K	Time-Attendance for 10,000 User Days
COSEC VYOM ACM UD10K	Access Control for 10,000 User Days
COSEC VYOM ESS UD10K	Employee Self Service for 10,000 User Days
COSEC VYOM VMM UD10K	Visitor Management for 10,000 User Days
COSEC VYOM CMM UD10K	Cafeteria Management for 10,000 User Days
COSEC VYOM JPC UD10K	Job Processing and Costing for 10,000 User Days
COSEC VYOM CWM UD10K	Contract Workers Management for 10,000 User Days
COSEC VYOM FVM UD10K	Field Visit Management for 10,000 User Days
COSEC VYOM PLATFORM UD100K	Application Software Platform for 100,000 User Days for COSEC VYOM
COSEC VYOM TAM UD100K	Time-Attendance for 100,000 User Days
COSEC VYOM ACM UD100K	Access Control for 100,000 User Days
COSEC VYOM ESS UD100K	Employee Self Service for 100,000 User Days
COSEC VYOM VMM UD100K	Visitor Management for 100,000 User Days
COSEC VYOM CMM UD100K	Cafeteria Management for 100,000 User Days
COSEC VYOM JPC UD100K	Job Processing and Costing for 100,000 User Days
COSEC VYOM CWM UD100K	Contract Workers Management for 100,000 User Days
COSEC VYOM FVM UD100K	Field Visit Management for 100,000 User Days
COSEC VYOM PLATFORM UD1000K	Application Software Platform for 1,000,000 User Days for COSEC VYOM
COSEC VYOM TAM UD1000K	Time-Attendance for 1,000,000 User Days
COSEC VYOM ACM UD1000K	Access Control for 1,000,000 User Days
COSEC VYOM ESS UD1000K	Employee Self Service for 1,000,000 User Days
COSEC VYOM VMM UD1000K	Visitor Management for 1,000,000 User Days
COSEC VYOM CMM UD1000K	Cafeteria Management for 1,000,000 User Days
COSEC VYOM JPC UD1000K	Job Processing and Costing for 1,000,000 User Days
COSEC VYOM CWM UD1000K	Contract Workers Management for 1,000,000 User Days
COSEC VYOM FVM UD1000K	Field Visit Management for 1,000,000 User Days
COSEC VYOM FR UD1K	Face Recognition for 1,000 User Days
COSEC VYOM FR UD10K	Face Recognition for 10,000 User Days
COSEC VYOM FR UD100K	Face Recognition for 1,00,000 User Days
COSEC VYOM FR UD1000K	Face Recognition for 10,00,000 User Days

## MATRIX NETWORK



## MATRIX COSEC CUSTOMERS

### MANUFACTURING

- Adani Enterprises Ltd.
- Coca Cola
- Ford Motors
- L&T Limited
- Linde Engineering
- TATA Steel
- Tyco Electronics
- Gujarat Ambuja Exports
- Aujan, KSA
- Al Khodari, KSA
- ABB
- Hero Moto Corp

### GOVERNMENT

- Indian Air Force
- Ministry of Interiors, KSA
- BHEL
- Dubai Statistics Center
- City of Rijeka

### HEALTHCARE

- Gold's Gym
- Fortis Memorial
- Dr. Reddy's Foundation
- Apollo Health & Lifestyle
- VIVA Gym, South Africa

### EDUCATION

- British School
- MIT College
- Indian Institute of Science
- Rishikul Vidyapeeth
- Andhra Pradesh University

### CONSTRUCTION

- Rustomjee Group
- Raheja Atlantis
- Shapoorji & Palanji
- Sterling & Wilson
- AFCONS Construction

### BFSI

- State Bank of India
- Indus Ind Bank
- Gruh Finance
- Shriram Finance
- HBD Bank
- Family Bank
- MISR Bank
- Sovereign Safe

### IT

- Wipro
- Tata Consultancy Services
- Risk Management Solutions
- Intec Capital Ltd.
- YOU Telecom and Broadband

### OTHER SECTORS

- Khimji Ramdas, Oman
- TCI
- Big Bazaar
- Burger King
- FedEx

## ABOUT MATRIX

Established in 1991, Matrix is a leader in security and telecom solutions for modern businesses and enterprises. Matrix, an innovative, technology driven and customer focused organization, is committed to keep pace with the revolutions in security and telecom industries. With more than 40% of its human resources dedicated to the development of new products, Matrix has launched cutting-edge products such as Unified Communications, IP-PBX, Universal Gateways, Convergence, VOIP Gateways, GSM Gateways, IP Video Surveillance, Access Control and Time-Attendance. These solutions are feature-rich, reliable and conform to the international standards. Having global footprints in Europe, North America, South America, Africa and Asia through an extensive network of more than 2,500 system integrators, Matrix ensures that the products serve the needs of its customers faster and longer. Matrix has gained trust and admiration of customers representing the entire spectrum of industries. Matrix has won many national and international awards for its innovative products.



*For further information, please contact:*



### MATRIX COMSEC

#### Head Office

394-GIDC, Makarpura, Vadodara-390 010, India.  
Ph: +91 265 6137222  
E-mail: [Inquiry@MatrixComSec.com](mailto:Inquiry@MatrixComSec.com)

#### Factory

19-GIDC, Waghodia, Dist. Vadodara-391 760, India.  
Ph: +91 7567875244

[www.MatrixAccessControl.com](http://www.MatrixAccessControl.com)

Toll Free: (+91) 1800-258-7747