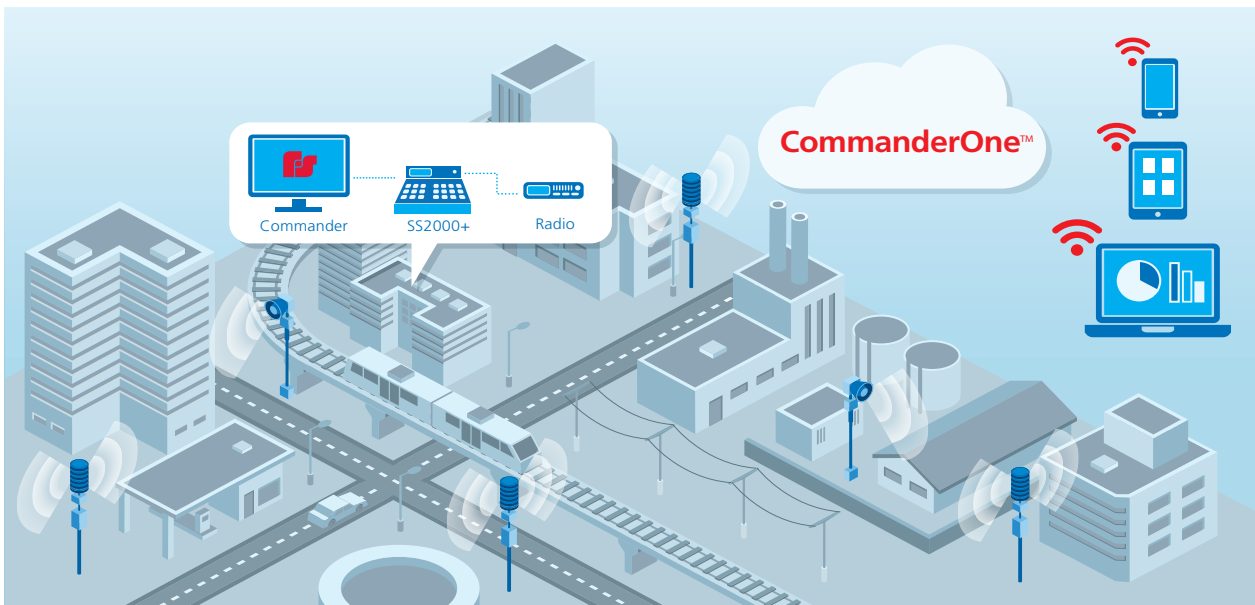


► CommanderOne®

Cloud-Based Control for Warning Systems

CommanderOne® is the latest innovation that allows you to connect with your most critical asset anytime, anywhere. The CommanderOne cloud-based platform enables you to monitor and control your warning sirens from any desktop or mobile device. It offers real-time data with actionable insights, enabling you to make important decisions quickly.

We understand that replacing a legacy infrastructure with new smart devices may be cost prohibitive, therefore, CommanderOne leverages your existing Federal Signal warning system and makes it smarter. With its simple dashboard and intuitive interface, CommanderOne is designed to make your mission successful in critical moments. CommanderOne is easily integrated with your existing Commander On-premise system. CommanderOne communicates with your system through a secure network communications interface. As changes occur with the On-Premise system those changes are mirrored on the cloud-based control system. Siren activation and monitoring can occur from anywhere from virtually any device. The map interface provides status indications with manual activations or user-defined polygons. Automatic or semi-automatic weather based polygons siren activation is available for all CommanderOne users.



User Experience – The Intuitive Interface is simple to set up, always up-to-date, and connects to your on-premise Commander control system.

Map-based Activation – Location of sirens and their status is critical. Use the geo-intelligent interface to see an overview of your system.

Desktop Freedom – Access your system from any computer connected to the internet.

Mobile – A user-friendly app for iOS and Android. It has a web-based console with a mobile responsive GUI.

Security – We understand that security is your top priority. CommanderOne utilizes IPSEC over SSL with a multi-layered authentication mechanism.

Weather Activation – All CommanderOne systems will have access to activate sirens based on weather-based polygons.

Auto-Sync Hotkeys – No need to keep multiple locations synchronized, your Hotkey activation settings are automatically created in CommanderOne.

Messaging – Keep in contact with employees and first responders via email, SMS, and voice. Create on the fly messages or templates to streamline your workflow.

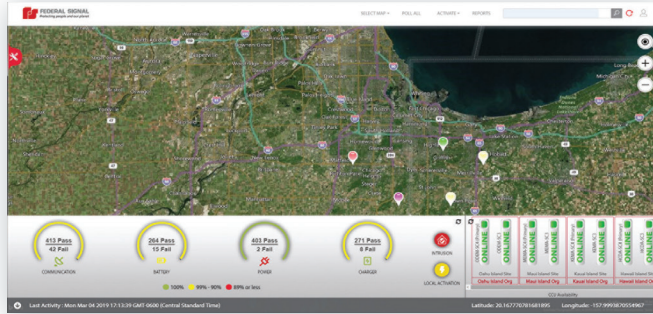
Scalability – CommanderOne platform is scalable from a few devices to hundreds of devices. It leverages a global network of data centers to maintain availability while securing your data.

CommanderOne® Cloud-Based Control for Your Warning Systems

Desktop and Mobile

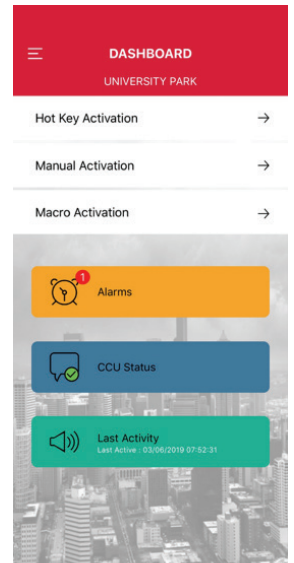
Desktop

The dashboard is designed to give you the status of the system in seconds. It utilizes Bing Maps, and its responsive design enables colored icons to reflect the status of each site and control point. Each status monitor is color-coded to quickly gain insight about your system.



Mobile

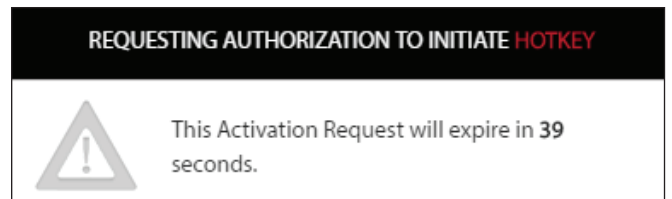
Native iOS and Android apps let you control and monitor your system from virtually anywhere. It shows all the alarms by a single click. Just like other apps, the system can be refreshed with a slide of a finger.



Security

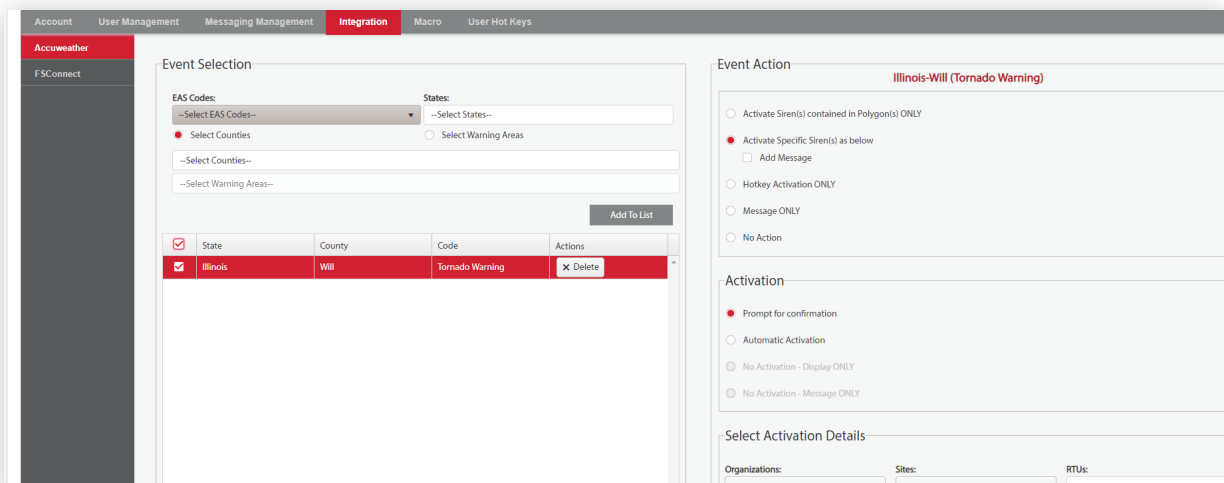
CommanderOne is secure by design. We use One Time Passwords, Token-Based Security and industry standard SSL to secure your communications.

Our new Multi-User Authentication takes security to the next level by allowing you to configure Hotkeys, Macros or Functions with an authorization level, which require varying levels of authorization: from simple passwords to app-based authentication. This means that you can set-up CommanderOne so that no one activates a function without another person verifying that activation, like two people needing their keys turned at the same time to open a locked door.



Weather

CommanderOne Accuweather® brings automatic and prompted activation based on weather events. Using a simple 'if this then that' interface, you choose them from events, such as a 911 telephone outage to a Winter Weather Advisory and the actions associated with them. From the Accuweather interface, you can send a simple message to your staff when watches are posted in surrounding counties, or activate the sirens when National Weather Service posts a Tornado Warning.



CommanderOne® Cloud-Based Control for Your Warning Systems

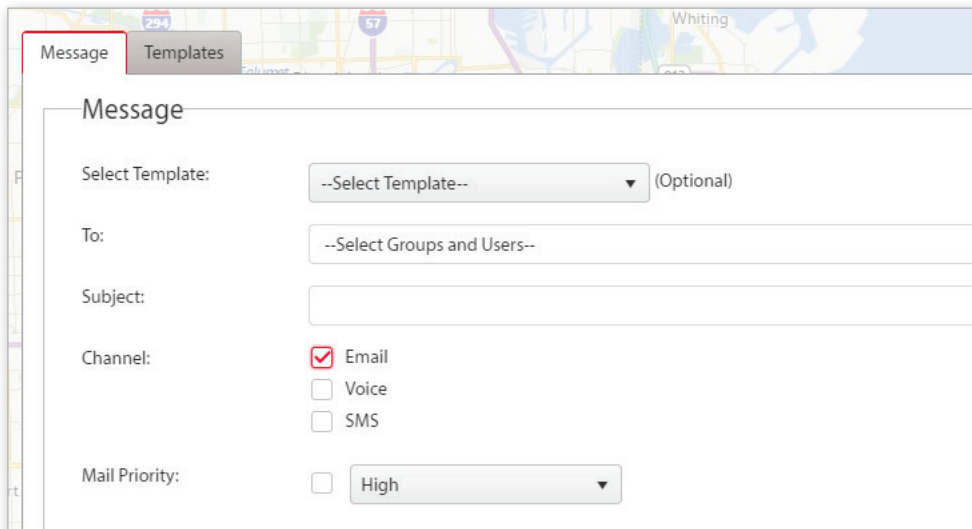
Messaging

CommanderOne Messaging is a new addition to the CommanderOne Cloud-Based Control system. Messaging adds the ability to quickly and easily contact your employees using our CommanderOne activation systems, either via the web or mobile app, on your smartphone.

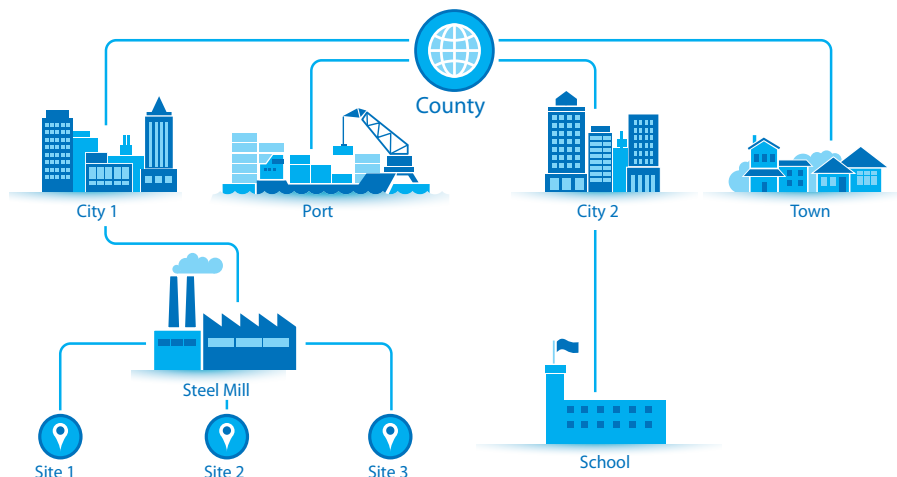
Messaging allows users to create templates, ad-hoc messages and even dynamically add phone numbers or emails at the time of message creation. Utilizing CommanderOne macros, you can activate a siren Hotkey and at the same time, a messaging template. Templates allow for operators to create scenarios ahead of time, adding all users and information in a ready-to-go, one-button activation.

Messaging add-on is designed around you and your first responders, by keeping it simple and easy for you to message your crew while activating the sirens. With simple, easy to understand plans, administrators can add messaging to their existing CommanderOne systems or simply purchase a new CommanderOne plan with Messaging.

Messaging builds upon the strengths of the CommanderOne platform and can allow administrators to send out operational alerts and automated messages the moment NOAA issues alerts.

A screenshot of the CommanderOne Messaging web interface. The interface has a map at the top showing a coastal area with labels for 'Whiting' and '294'. Below the map is a 'Message' form. The form has two tabs: 'Message' (selected) and 'Templates'. The 'Message' tab contains the following fields: 'Select Template:' with a dropdown menu showing '--Select Template--' and '(Optional)'; 'To:' with a dropdown menu showing '--Select Groups and Users--'; 'Subject:' with a text input field; 'Channel:' with three radio buttons: 'Email' (checked), 'Voice', and 'SMS'; and 'Mail Priority:' with a dropdown menu showing 'High'.

Scalable Centralized Command and Control



CommanderOne is designed for a centralized command and control by managing disparate systems. Whether you have one site or multiple sites, you need a single dashboard to monitor and manage your network.

Select CommanderOne with Messaging Model for Annual Subscription

	Standard	Professional	Enterprise
Model Number*	COMMANDER1-SM	COMMANDER1-PM	COMMANDER1-EM
Messaging Included	Yes	Yes	Yes
Number of Seats	5	20	Per quote
Number of Organizations	1	2-5	5+
Messaging Users	200	500	1,000
Messages Per Month	2,500	5,000	10,000
Accuweather included	Yes	Yes	Yes
In Release Commander Upgrade	Yes	Yes	Yes

*Includes Remote Implementation Support. For on-site support and training, contact your Federal Signal representative for a quote.

Select CommanderOne Model for Annual Subscription

	Standard	Professional	Enterprise
Model Number*	COMMANDER1-S	COMMANDER1-P	COMMANDER1-E
Number of Seats	5	20	Per quote
Number of Organizations	1	2-5	5+
Accuweather included	Yes	Yes	Yes
In Release Commander Upgrade	Yes	Yes	Yes

*Includes Remote Implementation Support. For on-site support and training, contact your Federal Signal representative for a quote.

CommanderOne is a registered trademark of Federal Signal Corporation.
Accuweather is a registered trademark of AccuWeather, Inc.